

WAAS CH <b>48909</b> <b>W21A</b>	APP CRS <b>209°</b>	Rwy Idg TDZE <b>948</b> Apt Elev <b>948</b>	<b>5498</b> <b>948</b> <b>948</b>
--	------------------------	---	---

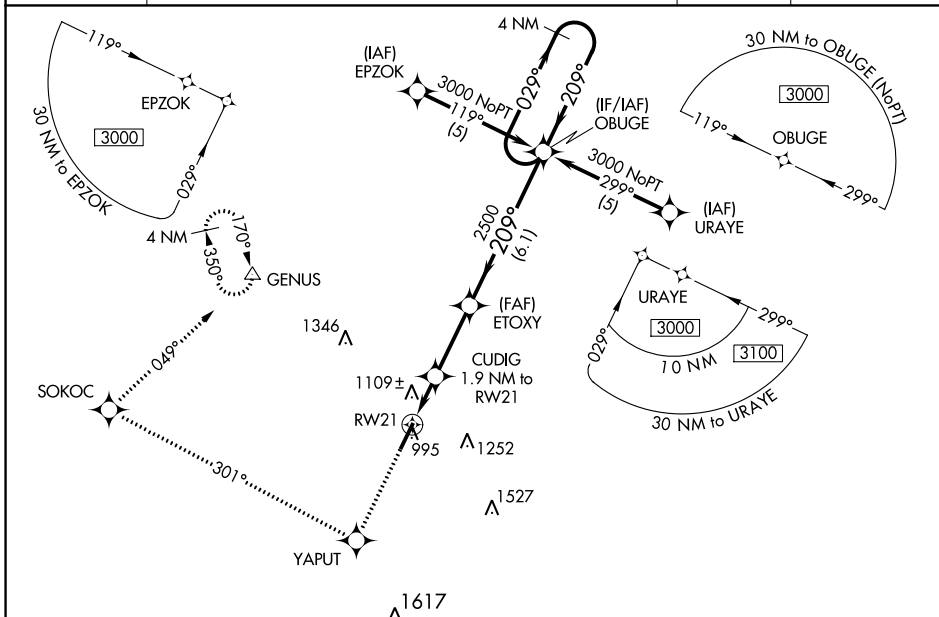
# RNAV (GPS) Z RWY 21

GEORGETOWN-SCOTT COUNTY RGNL (27K)

**NA** For uncompensated Baro-VNAV systems, LNAV/VNAV NA below -16° C (4° F) or above 46° C (114° F). DME/DME RNP-0.3 NA. When local altimeter setting not received, use Lexington altimeter setting and increase LPV DA to 1186, LNAV/VNAV DA to 1460, and all MDA 40 feet; increase LPV all Cats and LNAV Cats C/D and Circling Cat D visibility ¼ SM. Baro-VNAV and VDP NA with Lexington altimeter setting.

**MISSED APPROACH:** Climb to 3000 direct YAPUT and right turn on track 301° to SOKOC and right turn on track 049° to GENUS and hold.

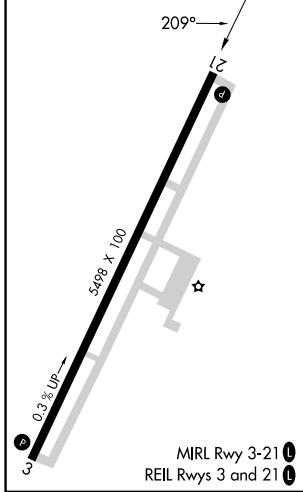
AWOS-3 <b>119,975</b>	LEXINGTON APP CON <b>120.15 259.3 (040° - 220°) 120.75 298.9 (221° - 039°)</b>	CLNC DEL <b>127,425</b>	UNICOM <b>123.0 (CTAF) 0</b>
--------------------------	---	----------------------------	---------------------------------



SE-1, 31 OCT 2024 to 28 NOV 2024

SE-1, 31 OCT 2024 to 28 NOV 2024

ELEV <b>948</b>	TDZE <b>948</b>
-----------------	-----------------



3000	↑	YAPUT	↻	SOKOC	↻	GENUS	△	4 NM Holding Pattern
			tr 301°		tr 049°			
*LNAV only.		CUDIG	ETOXY	OBUGE		3000		
		1.9 NM to RW21	2500	209°		029°		
		*1.2 NM to RW21	*1580	209°		GP 3.00° TCH 30		
		1.2 NM	0.7 NM	2.8 NM	6.1 NM			
CATEGORY	A	B	C	D				
LPV DA	1148-¾		200 (200-¾)					
LNAV/VNAV DA	1422-1¾		474 (500-1¾)					
LNAV MDA	1360-1	412 (500-1)	1360-1¼	412 (500-1¼)				
CIRCLING	1420-1	472 (500-1)	1560-1¾	612 (700-1¾)	1660-2¼	712 (800-2¼)		