

| | | |
|--|------------------------|---|
| WAAS CH 90239 W18A | APP CRS 181° | Rwy ldg 4894 TDZE 738 Apt Elev 738 |
|--|------------------------|---|

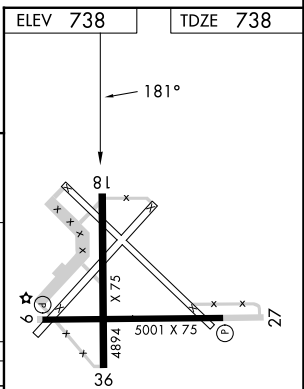
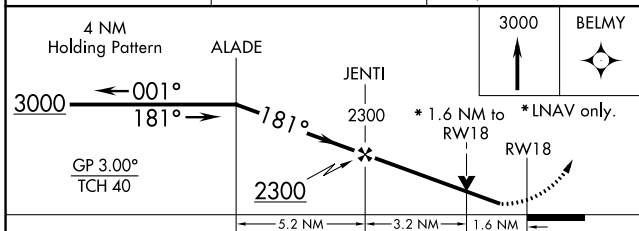
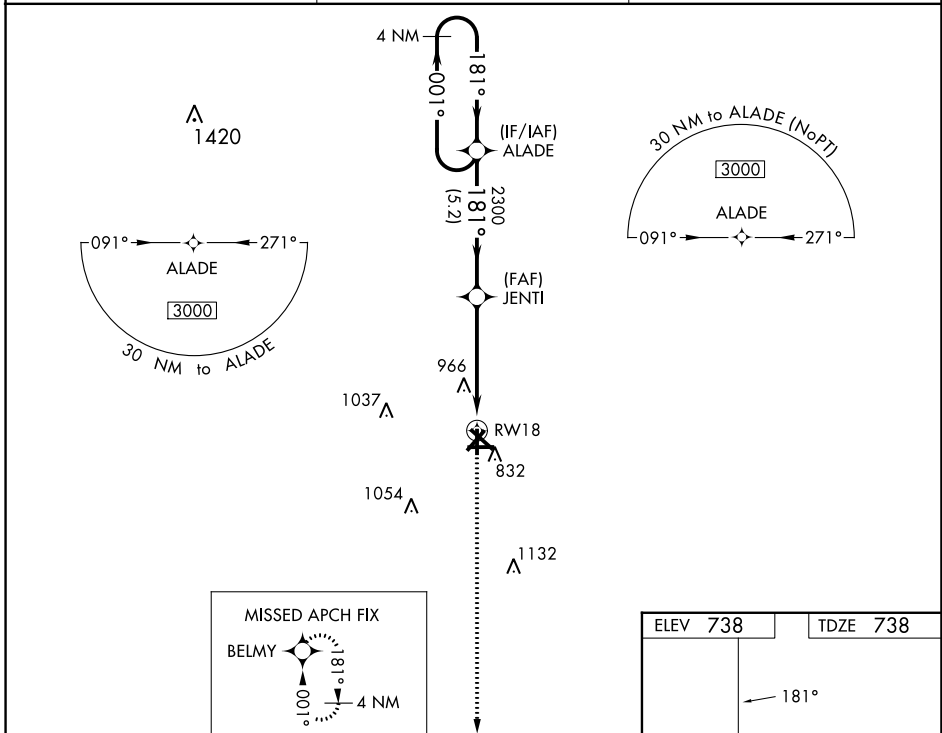
RNAV (GPS) RWY 18

RANTOUL NTL AVN CNTR-FRANK ELLIOTT FLD (TIP)

For uncompensated Baro-VNAV systems, LNAV/VNAV NA below -16°C (4°F) or above 54°C (130°F). Baro-VNAV and VDP NA when using Champaign Urbana altimeter setting. DME/DME RNP-0.3 NA. Helicopter visibility reduction below ¼ SM NA. When local altimeter setting not received, use Champaign Urbana altimeter setting and increase LPV DA to 1056 and all visibilities to 1½ mile, increase LNAV/VNAV DA to 1312 and all visibilities to 2 mile; increase all MDA 60 feet; increase LNAV and Circling Cats C/D visibility ¼ mile.

MISSED APPROACH: Climb to 3000 direct BELMY and hold.

| | | |
|--------------------------|---|---------------------------------|
| AWOS-3 119.025 | CHAMPAIGN APP CON ★ 121.35 285.65 | UNICOM 123.0 (CTAF) 1 |
|--------------------------|---|---------------------------------|



| CATEGORY | A | B | C | D |
|--------------|-----------|-------------|----------------|----------------|
| LPV DA | 1015-1 | | 277 (300-1) | |
| LNAV/VNAV DA | 1271-17/8 | | 533 (600-17/8) | |
| LNAV MDA | 1280-1 | 542 (600-1) | 1280-15/8 | 542 (600-15/8) |
| CIRCLING | 1280-1 | 542 (600-1) | 1380-13/4 | 1420-21/4 |
| | | | 642 (700-13/4) | 682 (700-21/4) |

REIL Rwy 9 and 27 1
MIRL Rwy 9-27 and 18-36 1

EC-3, 31 OCT 2024 to 28 NOV 2024

EC-3, 31 OCT 2024 to 28 NOV 2024