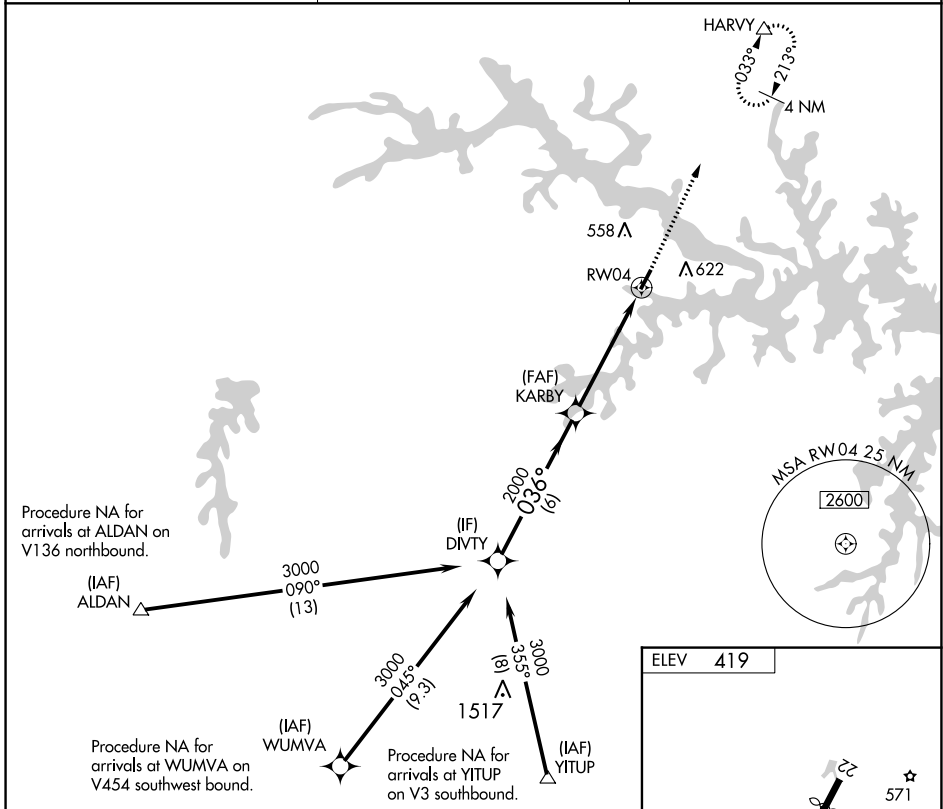


APP CRS <b>036°</b>	Rwy Idg TDZE Apt Elev	<b>N/A</b> <b>N/A</b> <b>419</b>
------------------------	-----------------------------	--

**RNAV (GPS)-A**  
LAKE COUNTRY RGNL (W63)

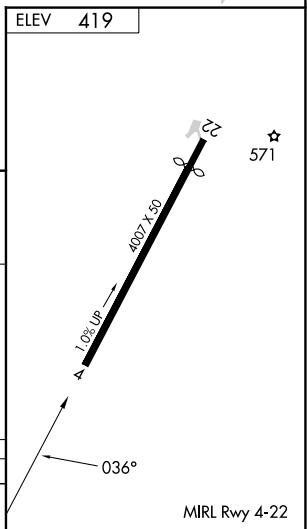
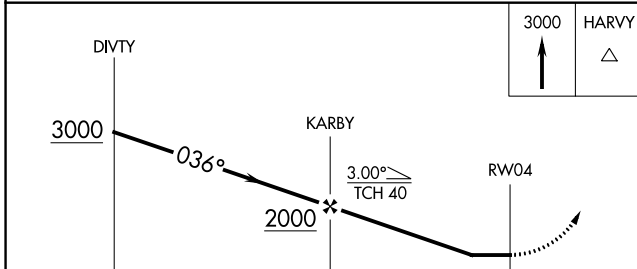
<p><b>▽</b> DME/DME RNP-0.3 NA. When local altimeter setting not received, use Chase City altimeter setting and increase all MDA 40 feet. Night landing: Rwy 22 NA. Helicopter visibility reduction below 3/4 SM NA.</p>	<p><b>△</b> MISSED APPROACH: Climb to 3000 direct HARVY and hold.</p>
--	---

AWOS-3 <b>118.225</b>	WASHINGTON CENTER <b>118.75 377.1</b>	CTAF <b>122.9</b>
--------------------------	--	----------------------



NE-3, 31 OCT 2024 to 28 NOV 2024

NE-3, 31 OCT 2024 to 28 NOV 2024



CATEGORY	A	B	C	D
CIRCLING	920-1 501 (600-1)	980-1 561 (600-1)	NA	