

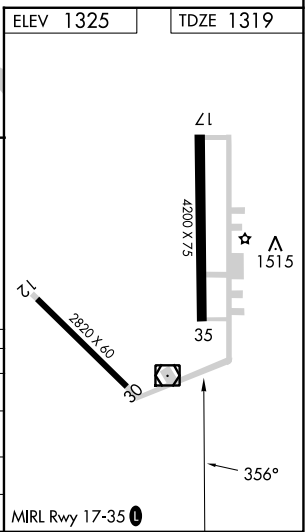
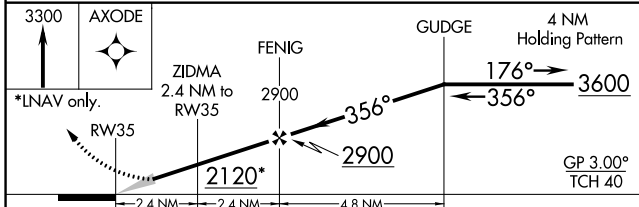
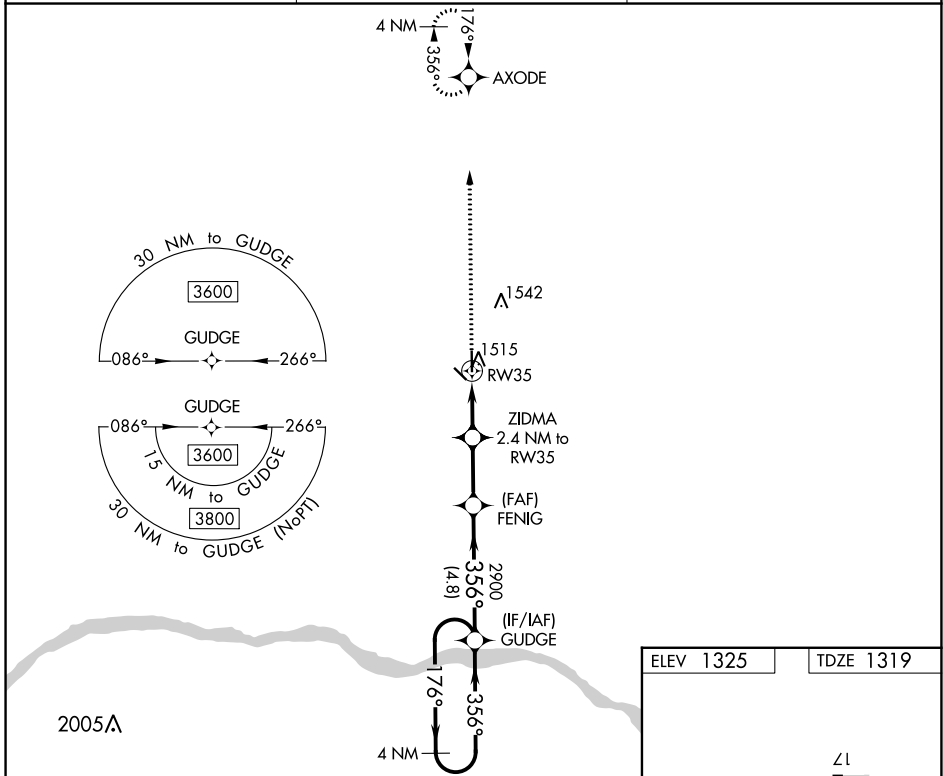
WAAS CH <b>62934</b> <b>W35A</b>	APP CRS <b>356°</b>	Rwy Idg <b>4200</b> TDZE <b>1319</b> Apt Elev <b>1325</b>
--	------------------------	---

# RNAV (GPS) RWY 35

SCRIBNER STATE (SCB)

	DME/DME RNP-0.3 NA. Use Fremont altimeter setting, when not received use Wahoo altimeter setting and increase all DA 24 feet and all MDA 40 feet. Helicopter visibility reduction below 3/4 SM NA. Baro-VNAV NA.	MISSED APPROACH: Climb to 3300 direct AXODE and hold.
	FET AWOS-3 <b>121.275</b>	OMAHA APP CON <b>120.1 354.05</b>

FET AWOS-3 <b>121.275</b>	OMAHA APP CON <b>120.1 354.05</b>	CTAF <b>122.9</b>
------------------------------	--------------------------------------	----------------------



CATEGORY	A	B	C	D
LPV DA	1606-1	287 (300-1)		NA
LNAV/VNAV DA	1744-1½	425 (500-1½)		NA
LNAV MDA	1840-1	521 (600-1)		NA
CIRCLING	1900-1	575 (600-1)		NA

NC-2, 31 OCT 2024 to 28 NOV 2024

NC-2, 31 OCT 2024 to 28 NOV 2024