

| | | |
|-------------|----------|-------------|
| APP CRS | Rwy Idg | 2441 |
| 322° | TDZE | 7 |
| | Apt Elev | 7 |

RNAV (GPS) RWY 31

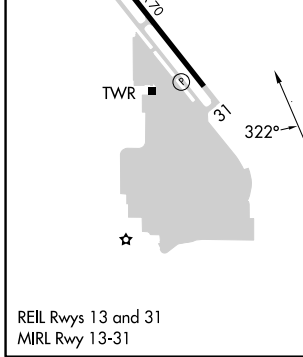
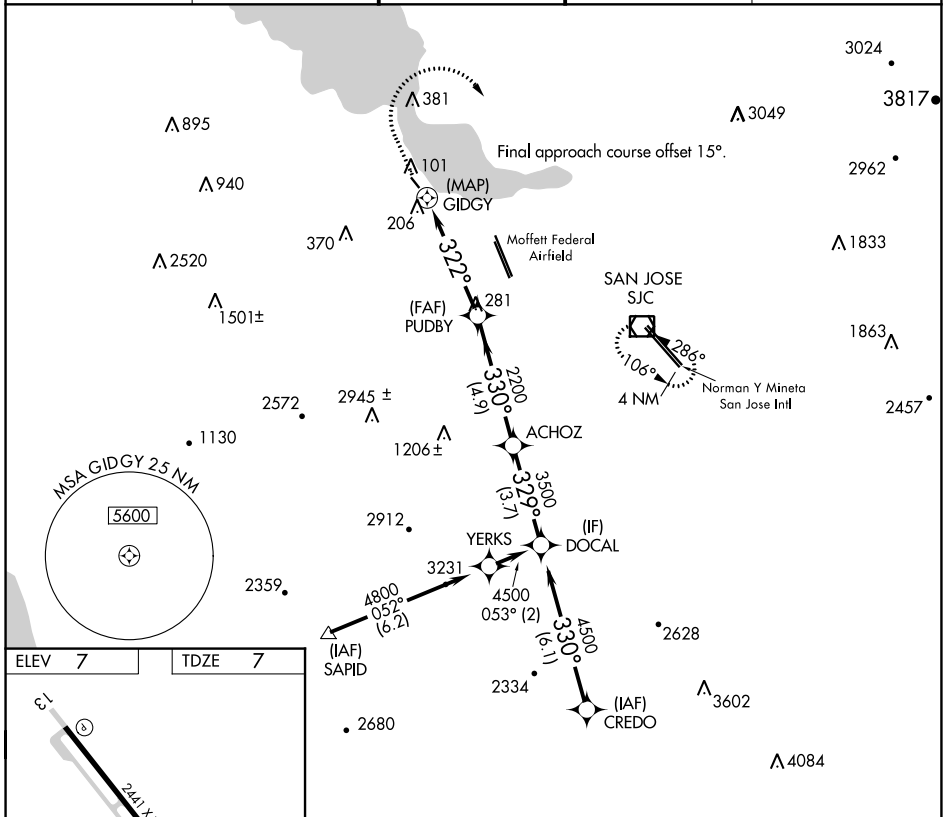
PALO ALTO (PAO)

RNP APCH

⚠ Circling NA southwest of Rwy 13-31. Rwy 31 helicopter visibility reduction below 1 SM NA. Procedure NA at night. When control tower closed, use Norman Y Mineta San Jose Intl altimeter setting and increase all MDAs 40 feet.

MISSED APPROACH: Climb to 1400 then climbing right turn to 3000 direct SJC VOR/DME and hold.

| | | | | |
|------------------------|---------------------------------------|--|-------------------------|-------------------------|
| ATIS 135.275 | NORCAL APP CON 121.3 270.35 | PALO ALTO TOWER* 118.6 (CTAF) | GND CON 125.0 | UNICOM 122.95 |
|------------------------|---------------------------------------|--|-------------------------|-------------------------|



| | | | | |
|---|-------------|-------------|--------|---|
| ELEV 7 | TDZE 7 | | | |
| 1400 | 3000 | SJC | | |
| ↑ | ↷ | ☐ | | |
| GIDGY → 322° → PUDBY → 330° → ACHOZ → 329° → DOCAL → 4500 | | | | |
| GIDGY → 322° → PUDBY → 330° → ACHOZ → 3500 → DOCAL → 4500 | | | | |
| 0.5 | 4.6 NM | 4.9 NM | 3.7 NM | |
| CATEGORY | A | B | C | D |
| LNAV MDA | 460-1 | 453 (500-1) | NA | |
| ☑ CIRCLING | 460-1 | 520-1 | NA | |
| | 453 (500-1) | 513 (600-1) | | |

SW-2, 31 OCT 2024 to 28 NOV 2024

SW-2, 31 OCT 2024 to 28 NOV 2024