

RNAV (GPS) Y RWY 30

SAN CARLOS (SQL)

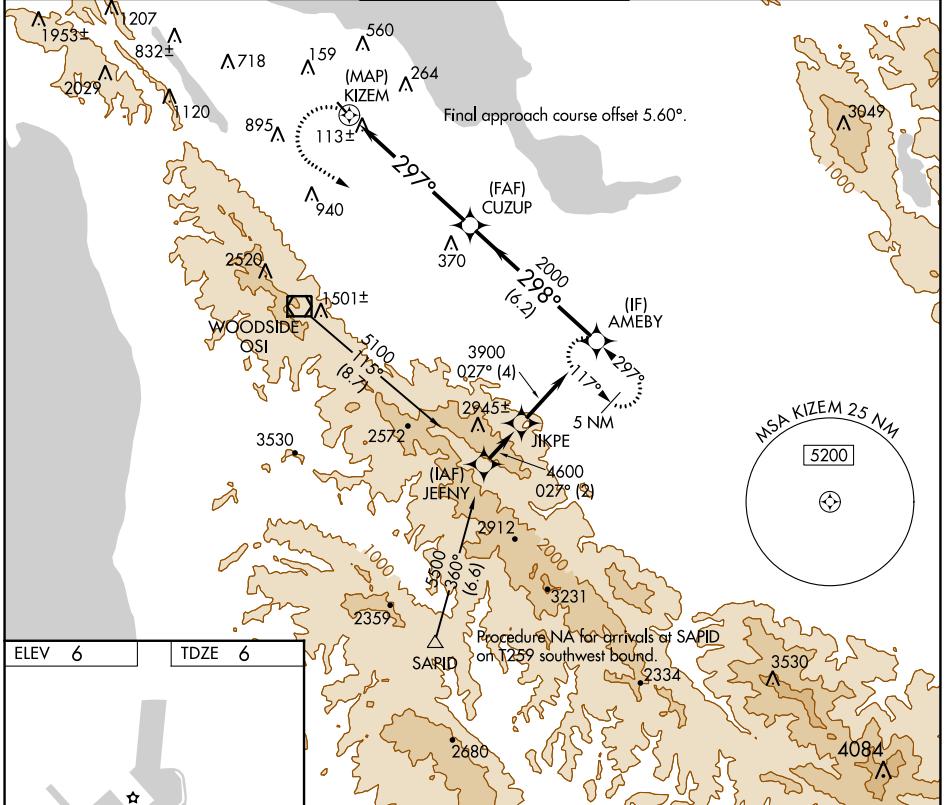
APP CRS 297°	Rwy Idg 2621
	TDZE 6
	Apt Elev 6

RNP APCH - GPS.

⚠ When Circling to Rwy 12 at night, operational VGSi required, remain on or above VGSi glidepath until threshold. Rwy 30 helicopter visibility reduction below 1 SM NA. Circling NA west of Rwy 12-30.

MISSED APPROACH: Climbing left turn to 5400 direct AMEBY and hold, continue climb-in-hold to 5400.

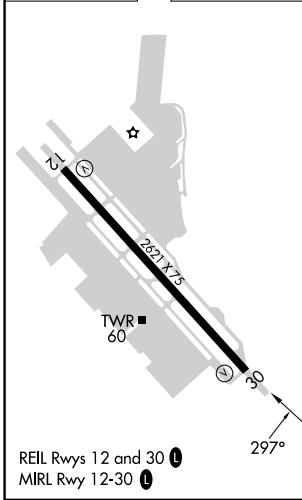
ATIS 125.9	NORCAL APP CON 133.95 317.6	SAN CARLOS TOWER ★ 119.0 (CTAF) 0 326.2	GND CON 121.6	UNICOM 122.95
----------------------	---------------------------------------	---	-------------------------	-------------------------



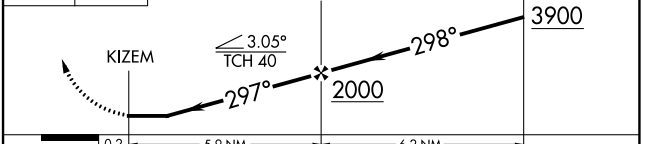
SW-2, 31 OCT 2024 to 28 NOV 2024

SW-2, 31 OCT 2024 to 28 NOV 2024

ELEV 6	TDZE 6
---------------	---------------



5400	AMEBY	VGSi and descent angles not coincident (VGSi Angle 3.00/TCH 25).	AMEBY
------	-------	--	-------



CATEGORY	A	B	C	D
LNAV MDA	1260-1¼ 1254 (1300-1¼)	1260-1½ 1254 (1300-1½)		NA
C CIRCLING	1260-1¼ 1254 (1300-1¼)	1260-1½ 1254 (1300-1½)		NA