

APP CRS <b>094°</b>	Rwy Idg <b>4000</b>
	TDZE <b>166</b>
	Apt Elev <b>172</b>

# RNAV (GPS) RWY 11

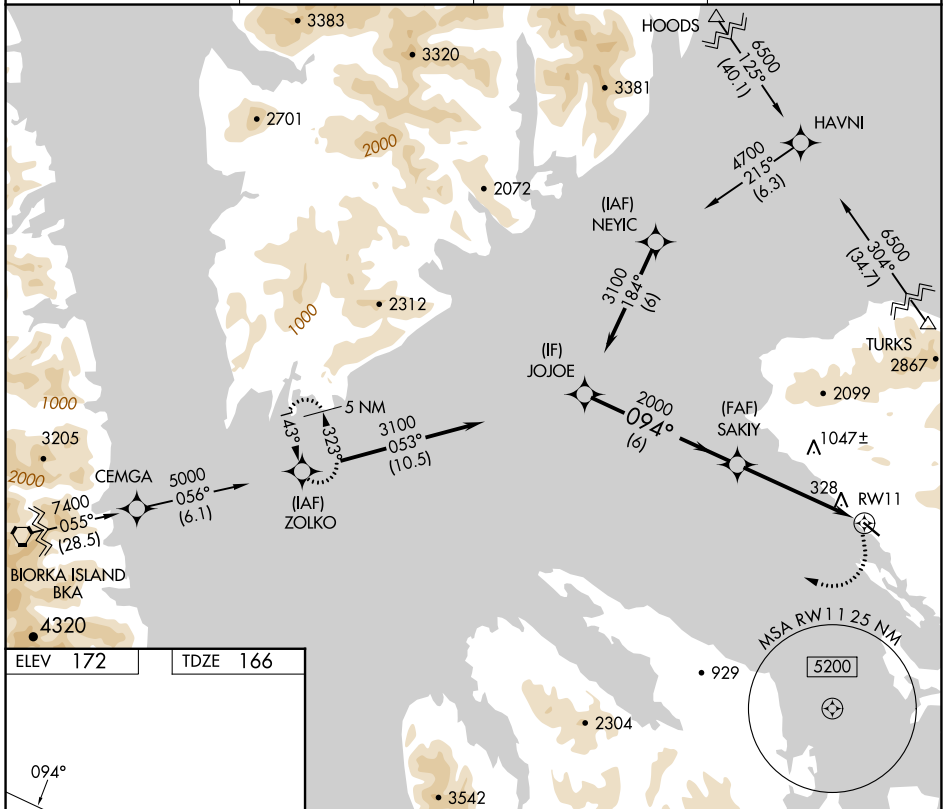
KAKE (AFE)(PAFE)

RNP APCH

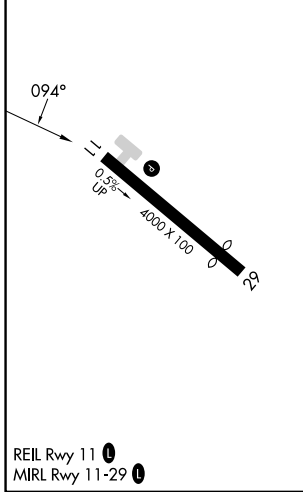
**▼** Circling NA north of Rwy 11-29. When local altimeter setting not received, use Petersburg James A Johnson altimeter setting and increase all MDAs 100 feet.  
**▲** Circling Rwy 29 NA at night. Rwy 11 helicopter visibility reduction below 3/4 SM NA.

MISSED APPROACH: Climbing right turn to 5000 direct ZOLKO and hold.

AWOS-3P <b>135.25</b>	ANCHORAGE CENTER <b>132.175</b>	SITKA RADIO <b>122.65 121.3</b>	CTAF <b>122.9 0</b>
--------------------------	------------------------------------	------------------------------------	------------------------

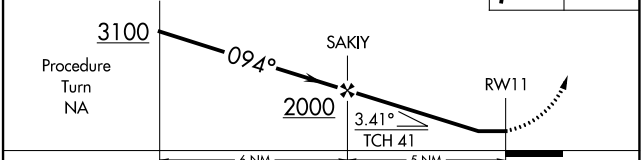


ELEV 172	TDZE 166
----------	----------



REIL Rwy 11 **0**  
MIRL Rwy 11-29 **0**

VGSI and descent angles not coincident (VGSI Angle 3.00/TCH 41).



CATEGORY	A	B	C	D
LNAV MDA	1120-1¼ 954 (1000-1¼)	1120-1½ 954 (1000-1½)	1120-3 954 (1000-3)	NA
CIRCLING	1120-1¼ 948 (1000-1¼)	1120-1½ 948 (1000-1½)	1120-3 948 (1000-3)	NA

AK, 31 OCT 2024 to 26 DEC 2024

AK, 31 OCT 2024 to 26 DEC 2024