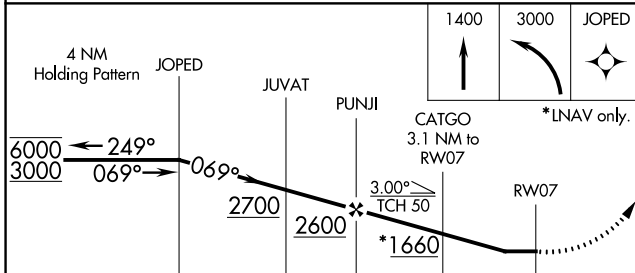
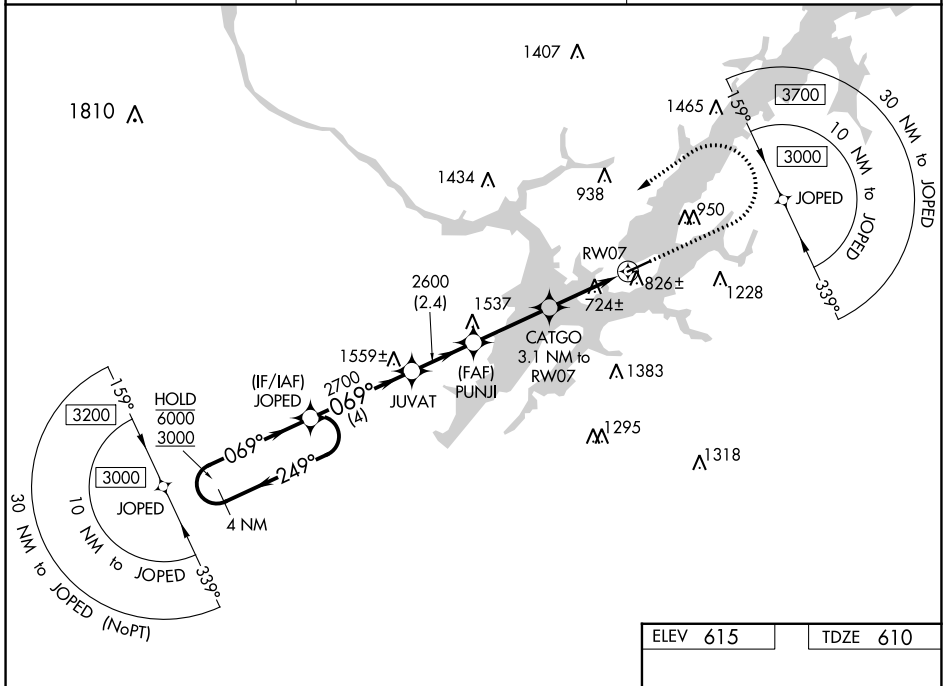


WAAS CH <b>90340</b> <b>W07A</b>	APP CRS <b>069°</b>	Rwy Idg <b>5005</b> TDZE <b>610</b> Apt Elev <b>615</b>
--	------------------------	---

# RNAV (GPS) RWY 7

GUNTERSVILLE MUNI/JOE STARNES FLD (8A.1)

RNP APCH.		MISSED APPROACH: Climb to 1400 then climbing left turn to 3000 direct JOPED and hold.
4A6 AWOS-3PT <b>120.125</b>	HUNTSVILLE APP CON ★ <b>125.6 354.1</b>	UNICOM <b>122.8 (CTAF) 0</b>



ELEV 615	TDZE 610				
CATEGORY	A	B	C	D	REIL Rwy 7 and 25 0 MRL Rwy 7-25 0
LP MDA	1040-1	430 (500-1)	1040-1¼	430 (500-1¼)	
LNAV MDA	1140-1	530 (600-1)	1140-1½	530 (600-1½)	
CIRCLING	1360-1 745 (800-1)	1380-1 765 (800-1)	1620-3 1005 (1100-3)	1840-3 1225 (1300-3)	

SE-4, 31 OCT 2024 to 28 NOV 2024

SE-4, 31 OCT 2024 to 28 NOV 2024