

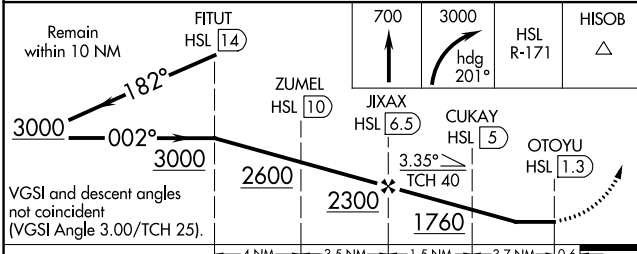
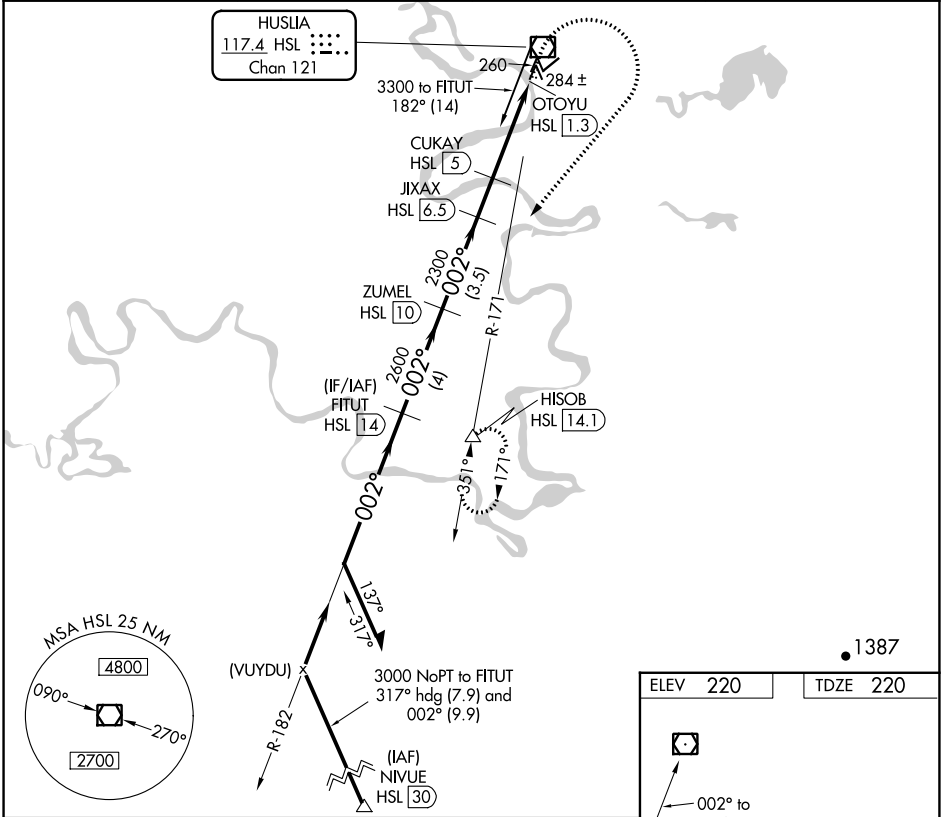
VOR/DME HSL 117.4 Chan 121	APP CRS 002°	Rwy ldg TDZE Apt Elev 4000 220 220
---	------------------------	--

VOR/DME RWY 3

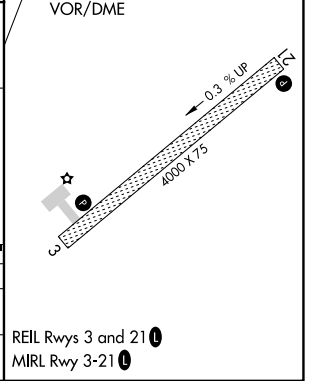
HUSLIA (HLA) (PAHL)

▼ Helicopter visibility reduction below 3/4 SM NA. MISSED APPROACH: Climb to 700 then climbing right turn to 3000 on heading 201° and HSL R-171 to HISOB/14.1 DME and hold.

AWOS-3P 135.75	ANCHORAGE CENTER 127.0 290.2	FAIRBANKS RADIO 122.4	UNICOM 122.8 (CTAF) 0
--------------------------	--	---------------------------------	---------------------------------



CATEGORY	A	B	C	D
S-3		540-1	320 (400-1)	
CIRCLING	600-1 380 (400-1)	680-1 460 (500-1)	680-1½ 460 (500-1½)	780-2 560 (600-2)



AK, 31 OCT 2024 to 26 DEC 2024

AK, 31 OCT 2024 to 26 DEC 2024