

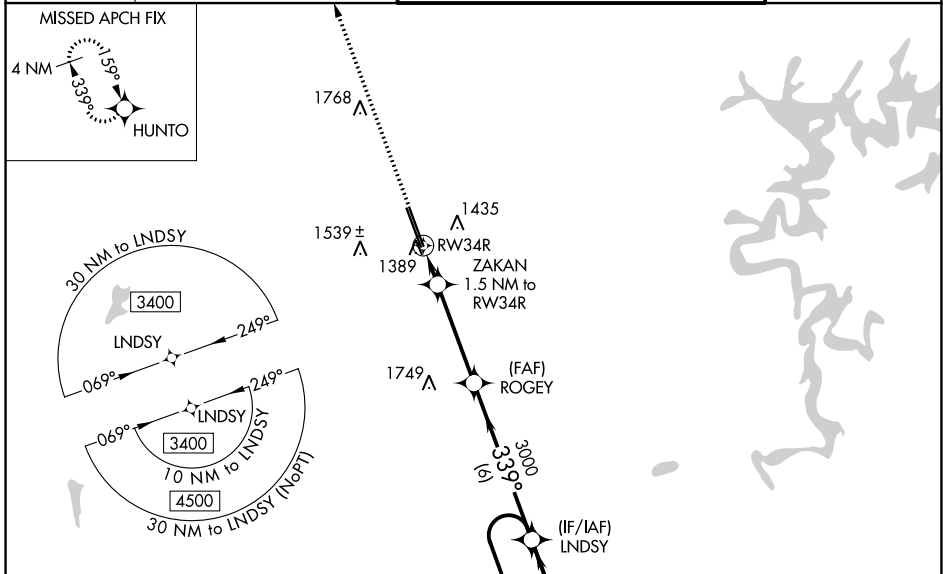
WAAS CH <b>97346</b> <b>W34A</b>	APP CRS <b>339°</b>	Rwy Idg TDZE <b>1273</b> Apt Elev <b>1288</b>
----------------------------------------	------------------------	-----------------------------------------------------

# RNAV (GPS) RWY 34R

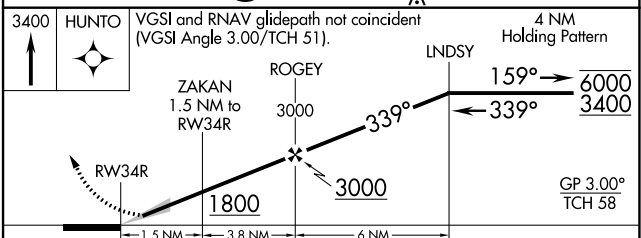
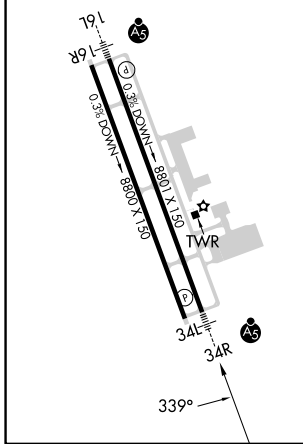
NORTHWEST ARKANSAS NTL (X.N.A)

RNP APCH - GPS.		MALSR 	MISSED APPROACH: Climb to 3400 direct HUNTO and hold
For uncompensated Baro-VNAV systems, LNAV/VNAV NA below -1.5°C or above 54°C. For inop ALS, increase LPV Cat E visibility to RVR 4000, LNAV/VNAV all Cats visibility to RVR 4500 and LNAV Cats C, D, and E visibility to RVR 5500. * RVR 1800 authorized with use of FD or AP or HUD to DA.			

ATIS <b>119.425</b>	RAZORBACK APP CON * <b>121.0 244.575</b>	NORTHWEST ARKANSAS NTL TOWER * <b>127.1 (CTAF) 0</b>	GND CON <b>121.9</b>
------------------------	---------------------------------------------	---------------------------------------------------------	-------------------------



ELEV 1288	<b>D</b> TDZE 1273
HIRL Rwy 16L-34R $\Delta$	
MIRL Rwy 16R-34L	



CATEGORY	A	B	C	D	E
LPV DA *	1473/24		200 (200-½)		
LNAV/VNAV DA	1550/24		277 (300-½)		
LNAV MDA	1640/24	367 (400-½)	1640/35		367 (400-¾)
CIRCLING	1740-1 452 (500-1)	1760-1 472 (500-1)	2040-2¼ 752 (800-2¼)	2080-2½ 792 (800-2½)	2080-2¾ 792 (800-2¾)

SC-1, 31 OCT 2024 to 28 NOV 2024

SC-1, 31 OCT 2024 to 28 NOV 2024