

APP CRS
334°

Rwy Idg **N/A**
TDZE **N/A**
Apt Elev **150**

RNAV (GPS)-B

ORLANDO APOPKA (X04)

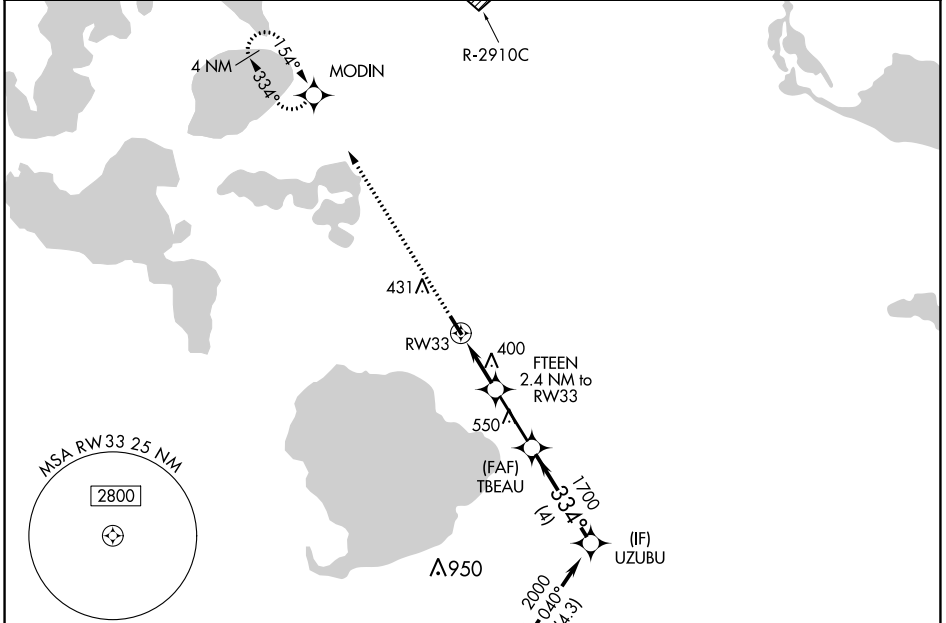
NA DME/DME RNP-0.3 NA. Procedure NA at night. Visibility reduction by helicopters NA. Use Leesburg Intl altimeter setting; when not received, use Executive altimeter setting.

MISSED APPROACH: Climb to 2000 direct MODIN and hold.

LEE ASOS
134.325

ORLANDO APP CON
135.3 351.9

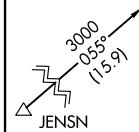
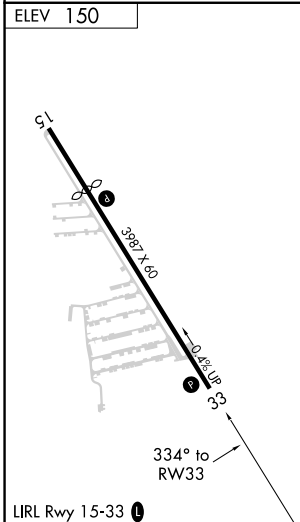
UNICOM
123.05 (CTAF)



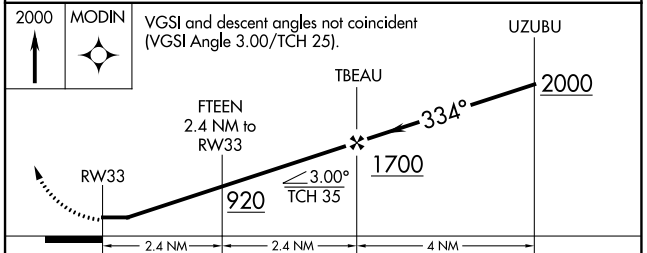
SE-3, 31 OCT 2024 to 28 NOV 2024

SE-3, 31 OCT 2024 to 28 NOV 2024

ELEV 150



Procedure NA for arrivals at JENSN on V152 southwest bound.



CATEGORY	A	B	C	D
CIRCLING	700-1 550 (600-1)	840-1 690 (700-1)	NA	