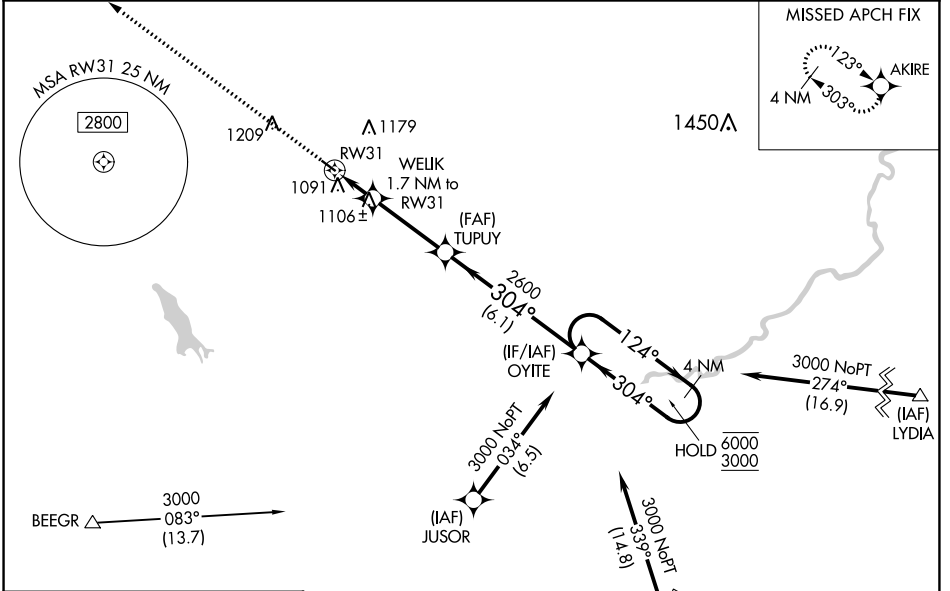


WAAS CH <b>48937</b> <b>W31A</b>	APP CRS <b>304°</b>	Rwy Idg TDZE Apt Elev	<b>3300</b> <b>992</b> <b>993</b>
--	------------------------	-----------------------------	---

# RNAV (GPS) RWY 31

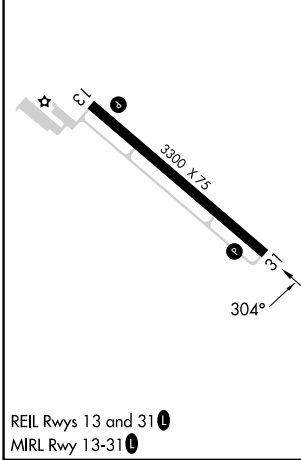
GLENCOE MUNI (GYL)

RNP APCH - GPS.		MISSED APPROACH: Climb to 3000 direct AKIRE and hold.
<p><b>⚠</b> For uncompensated Baro-VNAV systems, LNAV/VNAV NA below -16°C or above 54°C. Baro-VNAV and VDP NA when using Hutchinson altimeter setting. When local altimeter setting not received, use Hutchinson altimeter setting: increase LPV DA to 1285 feet; increase LNAV/VNAV DA to 1296 feet; increase all MDAs 60 feet.</p>		
AWOS-3 <b>119.625</b>	MINNEAPOLIS APP CON <b>134.7 284.7</b>	UNICOM <b>122.8 (CTAF) 0</b>



ELEV 993	TDZE 992
----------	----------

Procedure NA for arrivals at ZANNA on T400 southwest bound.



3000	AKIRE	VGSI and RNAV glidepath not coincident (VGSI Angle 3.00/TCH 28).	OYITE	4 NM Holding Pattern
	WELIK		TUPUY	
	1.7 NM to RW31		2600	
	1.1 NM to RW31		304°	
	1560		2600	
	1.1 NM	0.6	3.2 NM	6.1 NM
				GP 3.00° TCH 40

	CATEGORY	A	B	C	D
<b>LPV</b> DA	DA	1242-7/8	250 (300-7/8)		NA
<b>LNAV/VNAV</b> DA	DA	1253-7/8	261 (300-7/8)		NA
<b>LNAV</b> MDA		1360-1	368 (400-1)		NA
<b>CIRCLING</b>		1420-1 427 (500-1)	1480-1 487 (500-1)		NA

NC-1, 31 OCT 2024 to 28 NOV 2024

NC-1, 31 OCT 2024 to 28 NOV 2024