

|  |                        |                             |   |
|--|------------------------|-----------------------------|---|
| WAAS<br>CH <b>42822</b><br><b>W24A</b> | APP CRS<br><b>247°</b> | Rwy Idg<br>TDZE<br>Apt Elev | <b>5500</b><br><b>665</b><br><b>665</b> |
|--|------------------------|-----------------------------|---|

# RNAV (GPS) RWY 24

SANDUSKY COUNTY RGNL (S24)

RNP APCH.

**NA** For uncompensated Baro-VNAV systems, LNAV/VNAV NA below -16°C (4°F) or above 54°C (130°F). Baro-VNAV and VDP NA when using Toledo Express altimeter setting. When local altimeter setting not received, use Toledo Express altimeter setting: increase LPV DA to 978 feet and all visibilities  $\frac{3}{8}$  SM; increase LNAV/VNAV DA to 1196 feet and all visibilities  $\frac{3}{8}$  SM; increase all MDA 100 feet and LNAV visibility Cat C and D  $\frac{1}{4}$  SM and Circling visibility Cat C and D  $\frac{1}{2}$  SM.

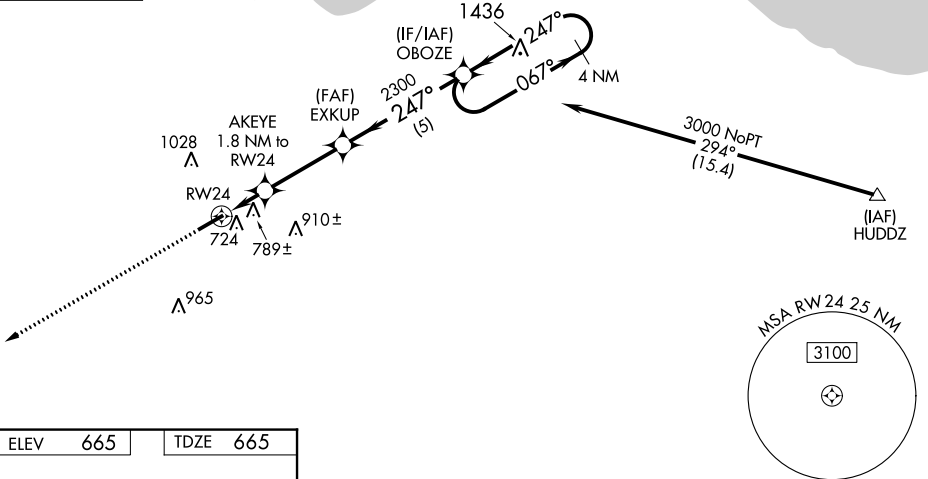
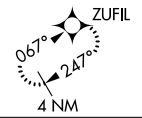
**MISSED APPROACH:**  
Climb to 3000 direct ZUFIL and hold.

AWOS-3P  
**119.575**

TOLEDO APP CON  
**126.1 307.0**

UNICOM  
**123.05 (CTAF) 0**

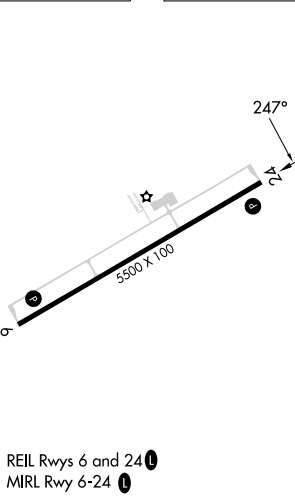
MISSED APCH FIX



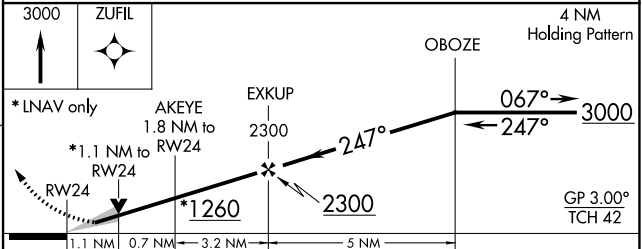
EC-2, 31 OCT 2024 to 28 NOV 2024

EC-2, 31 OCT 2024 to 28 NOV 2024

|      |     |      |     |
|------|-----|------|-----|
| ELEV | 665 | TDZE | 665 |
|------|-----|------|-----|



REIL Rws 6 and 24 **0**  
MIRL Rwy 6-24 **0**



| CATEGORY          | A                     | B                     | C                          | D  |
|-------------------|-----------------------|-----------------------|----------------------------|--|
| LPV DA            | 885- $\frac{3}{4}$    |                       | 220 (300- $\frac{3}{4}$ )  |  |
| LNAV/VNAV DA      | 1103-1 $\frac{1}{2}$  |                       | 438 (500-1 $\frac{1}{2}$ ) |  |
| LNAV MDA          | 1040-1                | 375 (400-1)           | 1040-1 $\frac{1}{8}$       | 375 (400-1 $\frac{1}{8}$ )                         |
| <b>C</b> CIRCLING | 1120-1<br>455 (500-1) | 1160-1<br>495 (500-1) | 1380-2<br>715 (800-2)      | 1380-2 $\frac{1}{4}$<br>715 (800-2 $\frac{1}{4}$ ) |