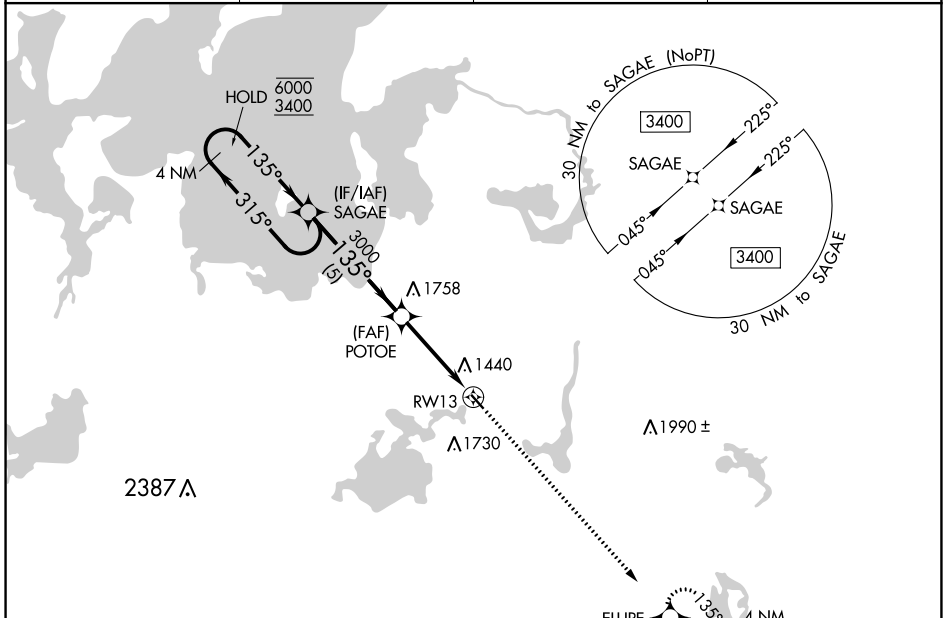


APP CRS <b>135°</b>	Rwy Idg TDZE Apt Elev	<b>3109</b> <b>1337</b> <b>1337</b>
------------------------	-----------------------------	---

# RNAV (GPS) RWY 13

LONGVILLE MUNI (XVG)

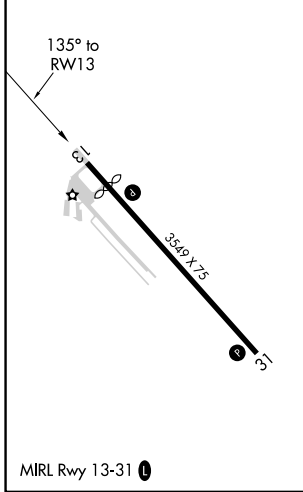
RNP APCH.		MISSED APPROACH: Climb to 3100 direct ELUPE and hold.	
<p><b>▼</b> Procedure NA at night.</p> <p><b>▲</b> Rwy 13 helicopter visibility reduction below 1 SM NA.</p>			
AWOS-3 <b>118.275</b>	MINNEAPOLIS CENTER <b>118.05 239.0</b>	GCO <b>121.725</b>	CTAF <b>122.90</b>



NC-1, 31 OCT 2024 to 28 NOV 2024

NC-1, 31 OCT 2024 to 28 NOV 2024

ELEV 1337	<b>D</b>	TDZE 1337
-----------	----------	-----------



VGSI and descent angles not coincident (VGSI Angle 4.00/TCH 19).

4 NM Holding Pattern	SAGAE	POTOE	RWY 13	3100 ELUPE
6000 3400	← 315° → 135°	135°	4.00° TCH 30	↑
		3000		✧
		5 NM	3.9 NM	

CATEGORY	A	B	C	D
LNAV MDA	1820-1	483 (500-1)	NA	
<b>C</b> CIRCLING	1860-1 523 (600-1)	2080-1 743 (800-1)	NA	