

APP CRS	Rwy Idg	5100
242°	TDZE	3411
	Apt Elev	3426

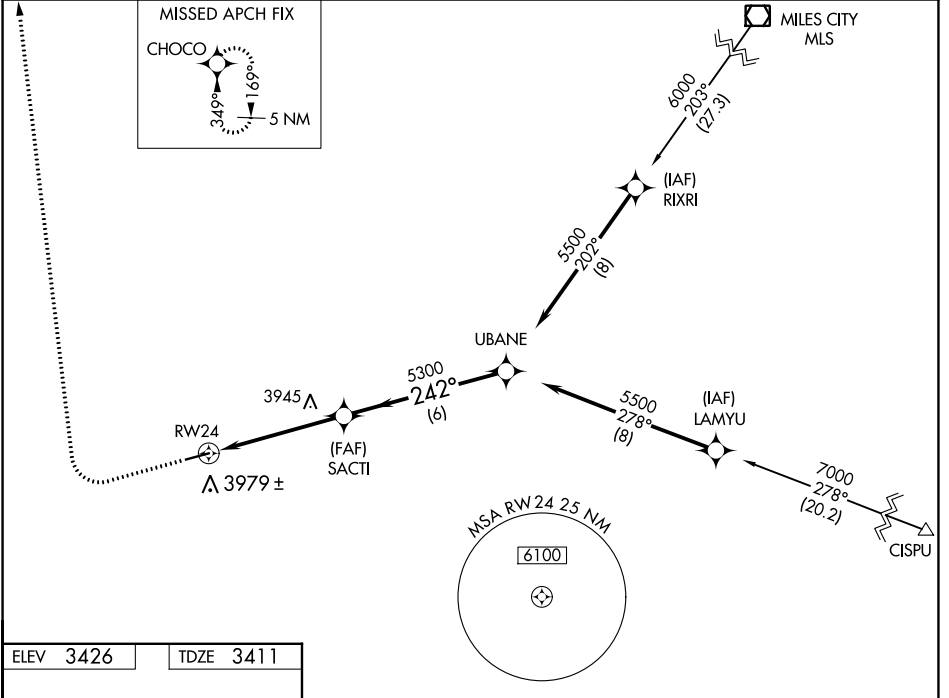
GPS RWY 24

COLSTRIP (M46)

NA When local altimeter not received use Miles City altimeter setting. Helicopter visibility reduction below 3/4 SM NA.

MISSED APPROACH: Climb to 4500 then climbing right turn to 6000 direct CHOCO WP and hold.

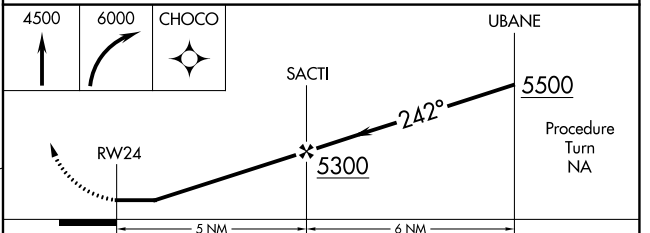
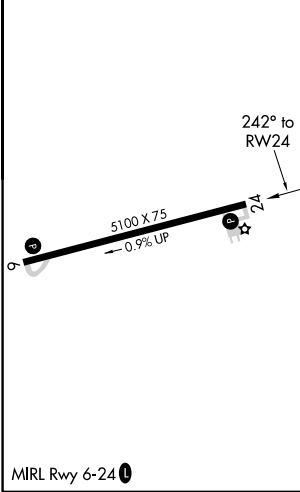
AWOS-AV 122.7	SALT LAKE CENTER 126.85 305.2	UNICOM 122.7 (CTAF)
--------------------------------	--	--------------------------------------



NW-1, 31 OCT 2024 to 28 NOV 2024

NW-1, 31 OCT 2024 to 28 NOV 2024

ELEV 3426	TDZE 3411
-----------	-----------



CATEGORY	5 NM		6 NM		D
	A	B	C		
S-24	4200-1 789 (800-1)	4200-1¼ 789 (800-1¼)	4200-2¼ 789 (800-2¼)		NA
CIRCLING	4340-1¼	914 (1000-1¼)	4340-2¾ 914 (1000-2¾)		NA
MILES CITY ALTIMETER SETTING					
S-24	4440-1¼ 1029 (1100-1¼)	4440-1½ 1029 (1100-1½)	4440-2¾ 1029 (1100-2¾)		NA
CIRCLING	4580-1¼ 1154 (1200-1¼)	4580-1½ 1154 (1200-1½)	4580-3 1154 (1200-3)		NA