

APP CRS	Rwy Idg	<b>6027</b>
<b>227°</b>	TDZE	<b>2429</b>
	Apt Elev	<b>2454</b>

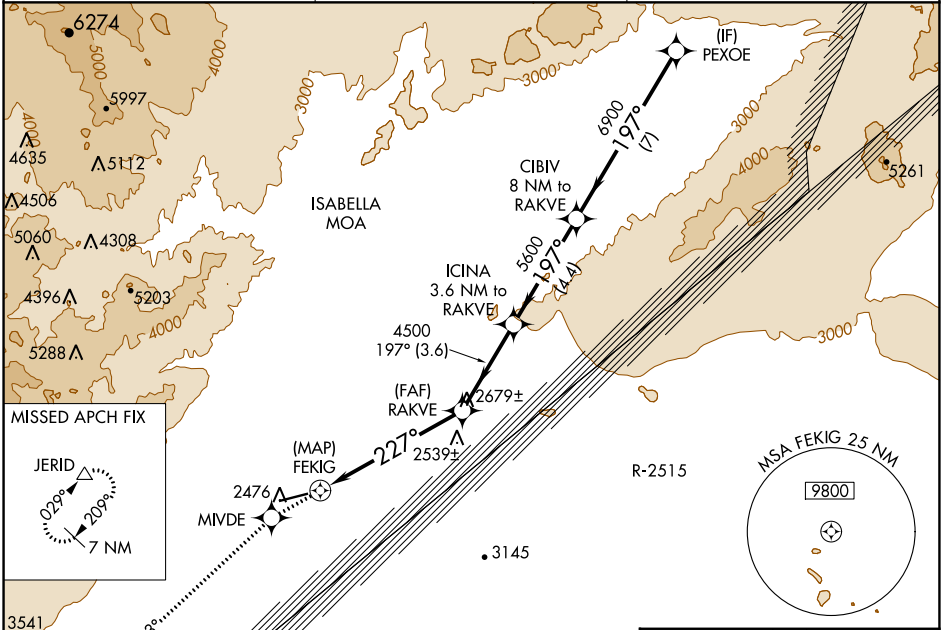
# RNAV (GPS) RWY 24

CALIFORNIA CITY MUNI (L71)

RNP APCH.  
 ▼ If local altimeter setting not received, use Edwards AFB altimeter setting and increase all MDAs 60 feet; if neither received, procedure not authorized.  
 ▲ NA

MISSED APPROACH: Climb to 9000 direct MIVDE and via 213° track to JERID and hold, continue climb-in-hold to 9000.

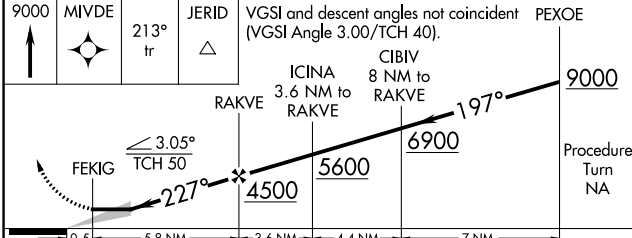
AWOS-1 <b>120.875</b>	JOSHUA APP CON <b>133.65 348.7</b>	UNICOM <b>122.7 (CTAF) ①</b>
--------------------------	---------------------------------------	---------------------------------



SW-3, 31 OCT 2024 to 28 NOV 2024

SW-3, 31 OCT 2024 to 28 NOV 2024

ELEV 2454	TDZE 2429
<b>RADAR REQUIRED</b>	



CATEGORY	A	B	C	D
LNAV MDA	2820-1 391 (400-1)			NA
CIRCLING	2960-1	506 (600-1)	3080-1¾ 626 (700-1¾)	NA

ELEV 2454	TDZE 2429
MRL Rwy 6-24 ① REL Rwy 24 ①	