

APP CRS	Rwy Idg	N/A
210°	TDZE	N/A
	Apt Elev	1635

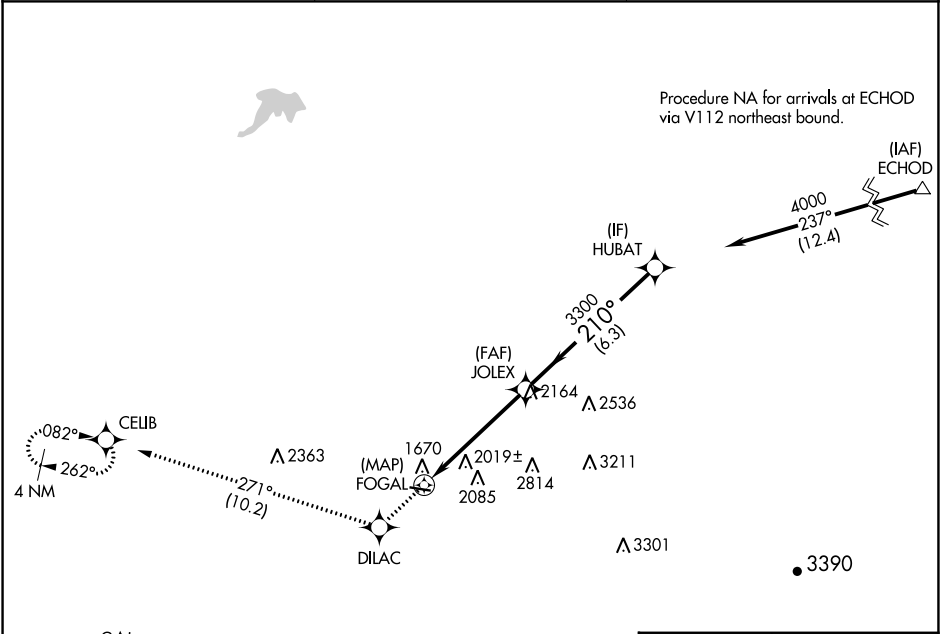
RNAV (GPS)-A

LEXINGTON (9S9)

NA When local altimeter setting not received, use Hermiston altimeter setting and increase all MDAs 220 feet and increase Cat A/B visibility ¼ SM. Procedure NA at night. DME/DME RNP-0.3 NA. Helicopter visibility reduction below 1 SM NA.

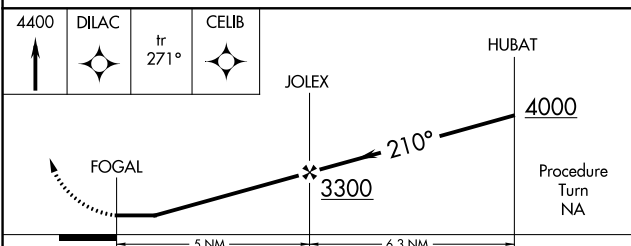
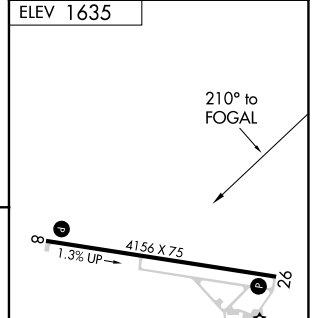
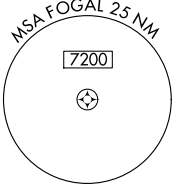
MISSED APPROACH: Climb to 4400 direct DILAC and via 271° track to CELIB and hold.

AWOS-3 134.475	SEATTLE CENTER 132.6 269.35	CTAF 122.9
--------------------------	---------------------------------------	----------------------



NW-1, 31 OCT 2024 to 28 NOV 2024

NW-1, 31 OCT 2024 to 28 NOV 2024



CATEGORY	A	B	C	D
CIRCLING	2380-1 745 (800-1)	2460-1¼ 825 (900-1¼)	2700-3 1065 (1100-3)	3180-3 1545 (1600-3)

