

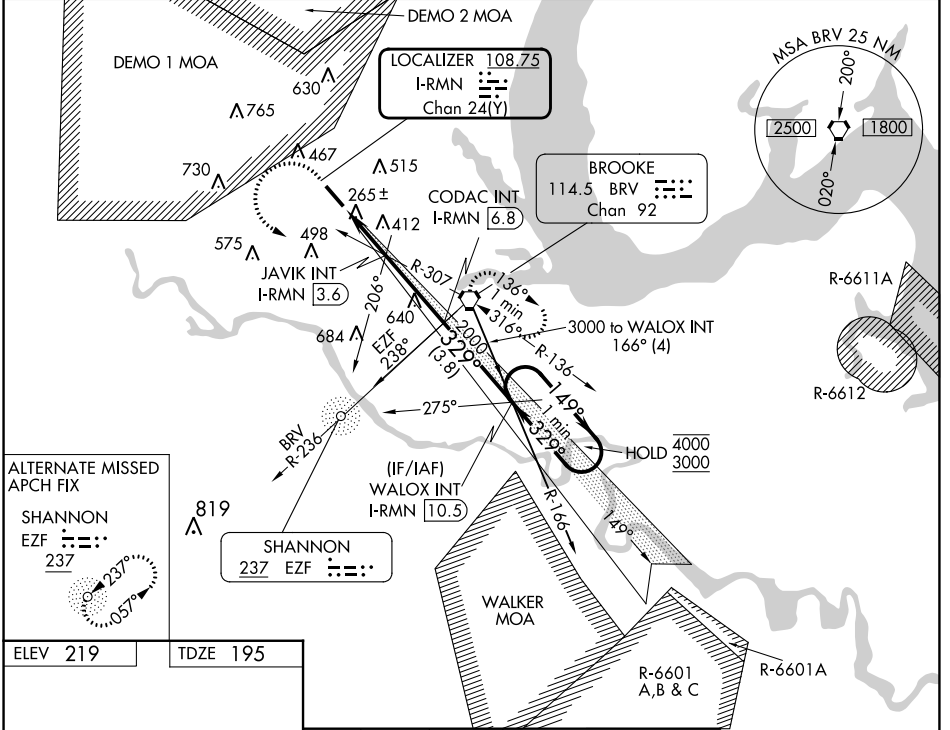
LOC/DME I-RMN	APP CRS	Rwy Idg	6000
108.75	329°	TDZE	195
Chan 24(Y)		Apt Elev	219

ILS or LOC RWY 33

STAFFORD RGNL (RMN)

ADF or DME required.	MALS	MISSED APPROACH: Climb to 700 then climbing left turn to 2100 direct BRV VORTAC and hold, continue climb-in-hold to 2100.
Circling Rwy 15 NA at night. Inop table does not apply		

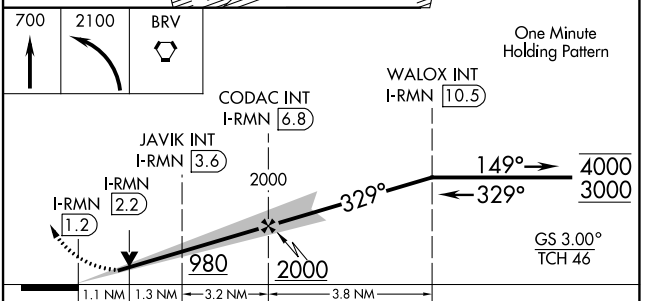
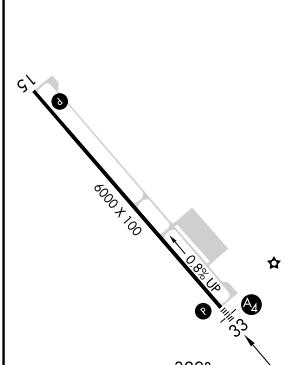
AWOS-3 126.325	QUANTICO APP CON★ 127.05 290.375	GCO 135.075	UNICOM 122.725 (CTAF)
--------------------------	--	-----------------------	---------------------------------



ALTERNATE MISSED APCH FIX

SHANNON
EFZ **237**

ELEV 219	TDZE 195
-----------------	-----------------



REIL Rwy 15

HIRL Rwy 15-33

FAF to MAP 5.6 NM

Knots	60	90	120	150	180
Min:Sec	5:36	3:44	2:48	2:14	1:52

CATEGORY	A	B	C	D
S-ILS 33		445- ³ / ₄	250 (300- ³ / ₄)	
S-LOC 33		560- ³ / ₄	365 (400- ³ / ₄)	
CIRCLING	720-1	820-1	820-1 ³ / ₄	1040-2 ³ / ₄
	501 (600-1)	601 (700-1)	601 (700-1 ³ / ₄)	821 (900-2 ³ / ₄)

NE-3, 31 OCT 2024 to 28 NOV 2024

NE-3, 31 OCT 2024 to 28 NOV 2024