

WAAS CH 81805 W33A	APP CRS 329°	Rwy Idg TDZE Apt Elev	6000 195 219
--	------------------------	-----------------------------	---

RNAV (GPS) RWY 33

STAFFORD RGNL (R.MN)

RNP APCH - GPS.

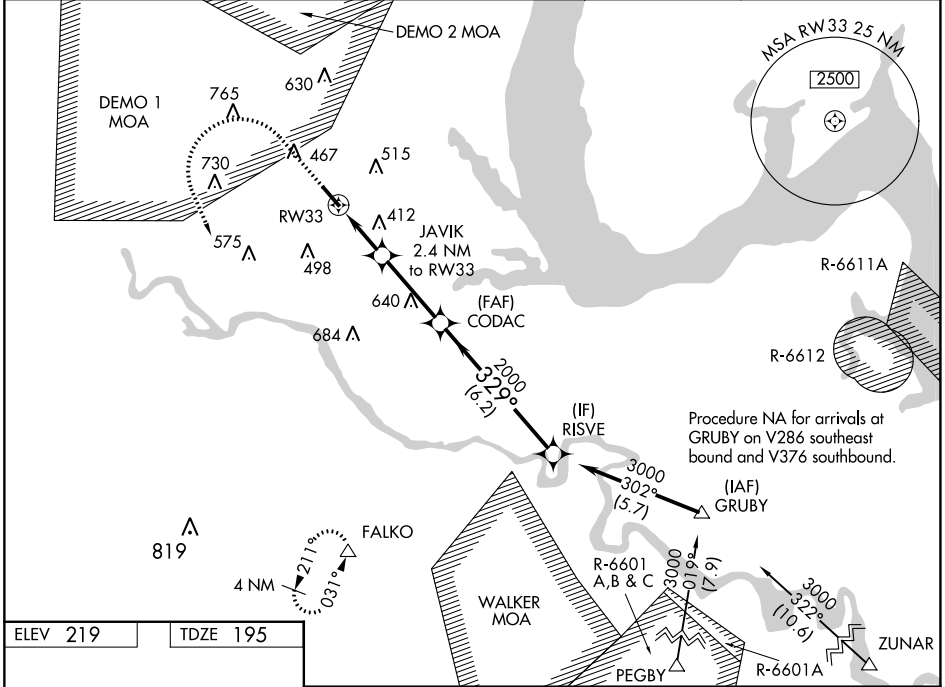
⚠ Inop table does not apply to LPV all Cats. For uncompensated Baro-VNAV systems, LNAV/VNAV NA below -15°C or above 54°C. Circling Rwy 15 NA at night.

MALS

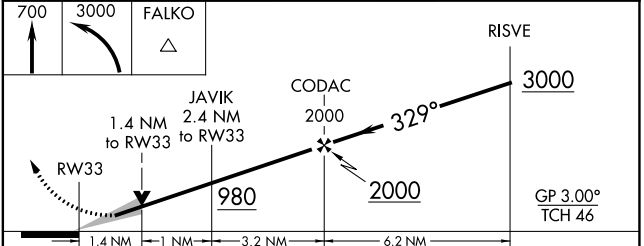
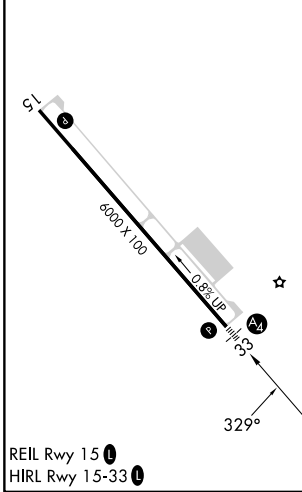


MISSED APPROACH: Climb to 700 then climbing left turn to 3000 direct FALKO and hold, continue climb-in-hold to 3000.

AWOS-3 126.325	QUANTICO APP CON * 127.05 290.375	GCO 135.075	UNICOM 122.725 (CTAF)
--------------------------	---	-----------------------	---------------------------------



ELEV 219	TDZE 195
----------	----------



CATEGORY	A	B	C	D
LPV DA	445-3/4 250 (300-3/4)			
LNAV/VNAV DA	680-1 1/8 485 (500-1 1/8)			
LNAV MDA	680-3/4	485 (500-3/4)	680-1 1/8	485 (500-1 1/8)
CIRCLING	720-1 501 (600-1)	820-1 601 (700-1)	820-1 3/4 601 (700-1 3/4)	1040-2 3/4 821 (900-2 3/4)

NE-3, 31 OCT 2024 to 28 NOV 2024

NE-3, 31 OCT 2024 to 28 NOV 2024