

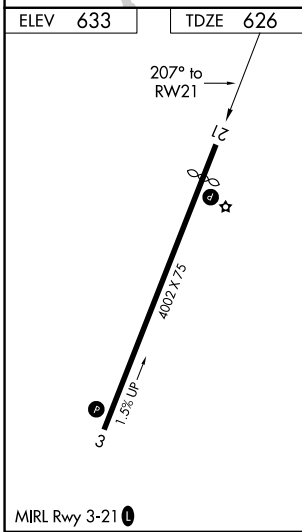
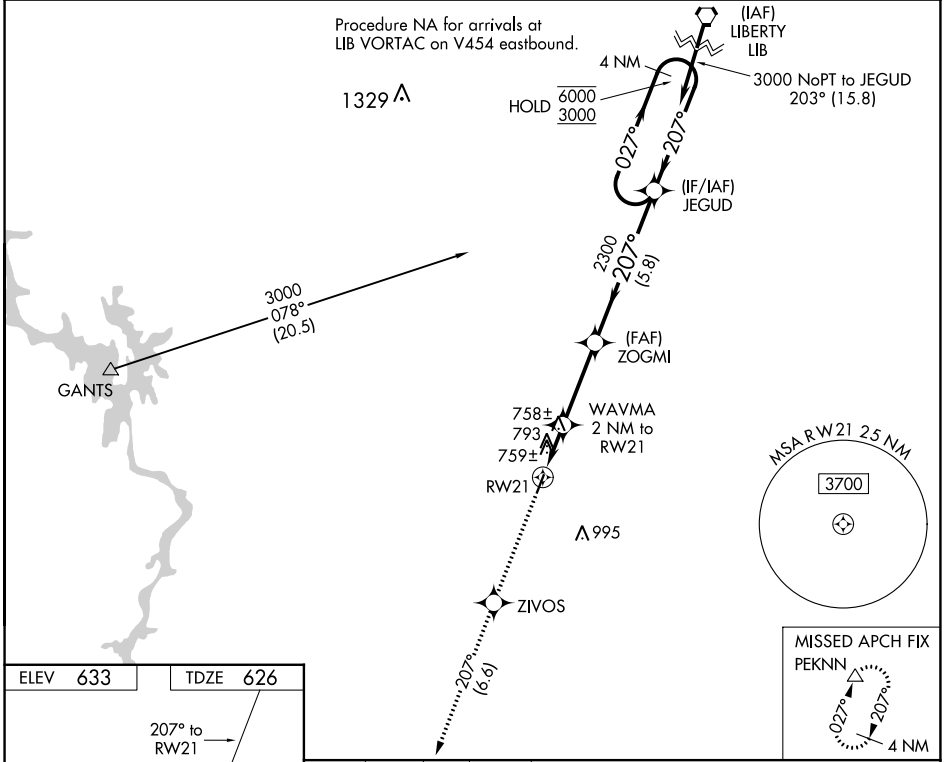
WAAS CH 72935 W21A	APP CRS 207°	Rwy Idg TDZE 626 Apt Elev 633
--	------------------------	---

RNAV (GPS) RWY 21

MONTGOMERY COUNTY (43A)

RNP APCH-GPS.
 ▼ Rwy 21 helicopter visibility reduction below 1 SM NA. Use Asheboro altimeter setting; when not received, use Albemarle altimeter setting. Procedure NA at night.
 ▲ MISSED APPROACH: Climb to 3000 direct ZIVOS and on track 207° to PEKNN and hold.

HBI AWOS-3 119.275	FAYETTEVILLE APP CON 127.8 343.725	UNICOM 122.8 (CTAF) 0
------------------------------	--	---------------------------------



3000	ZIVOS	PEKNN	Visual Segment - Obstacles.	
↑	✧	tr 207°	JEGUD 4 NM Holding Pattern	
WAVMA 2 NM to RWY 21		ZOGMI		
RWY 21	1280	2300	027° → 6000 ← 207° 3000	
← 2 NM		3.2 NM	5.8 NM	
CATEGORY	A	B	C	D
LP MDA	1060-1	434 (500-1)		NA
LNAV MDA	1100-1	474 (500-1)		NA
☑ CIRCLING	1240-1 607 (700-1)	1340-1 707 (800-1)		NA

SE-2, 31 OCT 2024 to 28 NOV 2024

SE-2, 31 OCT 2024 to 28 NOV 2024