

BUTLER, GEORGIA

AL-9845 (FAA)

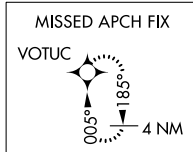
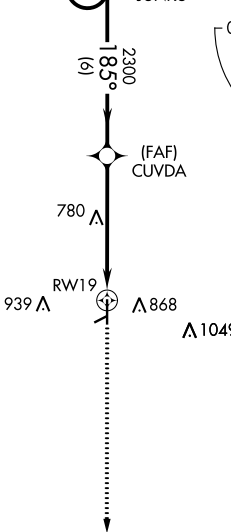
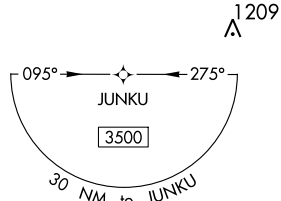
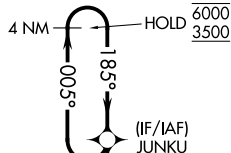
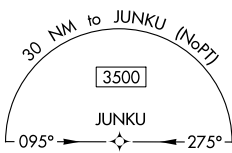
22195

| | | | |
|--|------------------------|---|-------------|
| WAAS CH 99733 W19A | APP CRS 185° | Rwy Idg TDZE 647 Apt Elev 667 | 5002 |
|--|------------------------|---|-------------|

RNAV (GPS) RWY 19

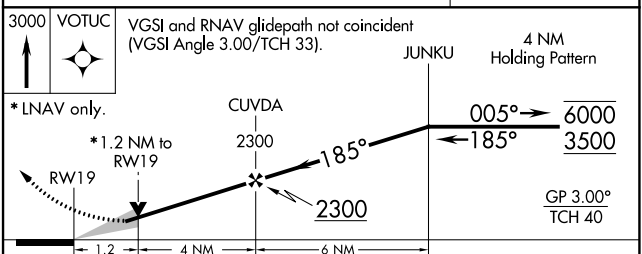
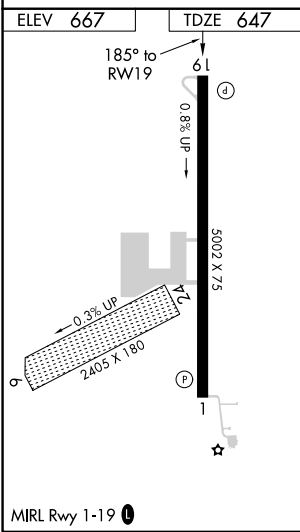
BUTLER MUNI (6A1)

| | | |
|---|---|---|
| RNP APCH-GPS. | | MISSED APPROACH: Climb to 3000 direct VOTUC and hold. |
| <p>▽ Circling NA to Rwys 6 and 24. Circling to Rwy 1 NA at night. For uncompensated Baro-VNAV systems, LNAV/VNAV NA below -16°C or above 54°C.</p> | | |
| AWOS-3 119.525 | ATLANTA APP CON * 124.2 279.6 | CTAF 122.9 |



SE-4, 31 OCT 2024 to 28 NOV 2024

SE-4, 31 OCT 2024 to 28 NOV 2024



| CATEGORY | A | B | C | D |
|-------------------|--------|-------------|-------------------------|-------------------------|
| LPV DA | | 847-1 | 200 (200-1) | |
| LNAV/VNAV DA | | 911-1 | 264 (300-1) | |
| LNAV MDA | 1040-1 | 393 (400-1) | 1040-1½ | 393 (400-1½) |
| ☑ CIRCLING | 1180-1 | 513 (600-1) | 1240-1½ 573 (600-1½) | 1360-2¼ 693 (700-2¼) |

BUTLER, GEORGIA
Amdt 2B 14JUL22

32°34'N-84°15'W

RNAV (GPS) RWY 19

BUTLER MUNI (6A1)