

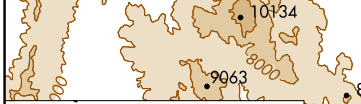
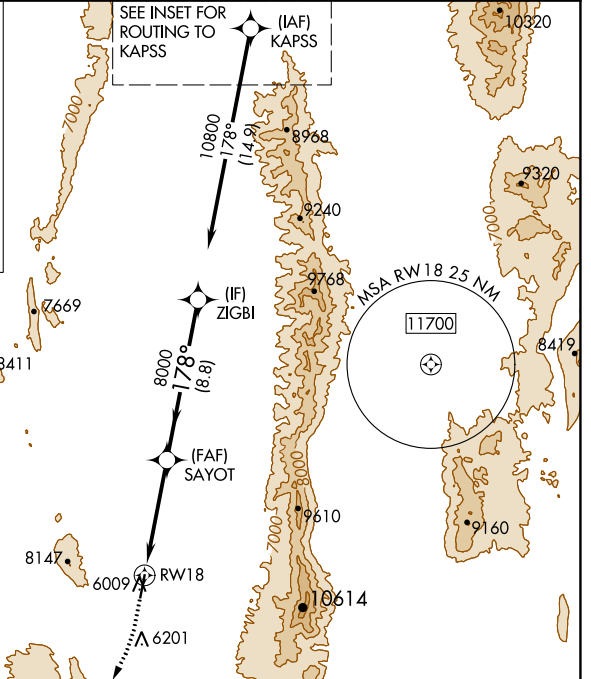
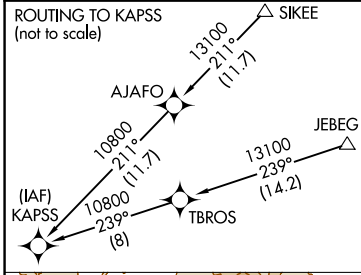
WAAS CH <b>42732</b> W18A	APP CRS <b>178°</b>	Rwy Idg TDZE Apt Elev	<b>7300</b> <b>5944</b> <b>5958</b>
---------------------------------	------------------------	-----------------------------	-------------------------------------------

# RNAV (GPS) RWY 18

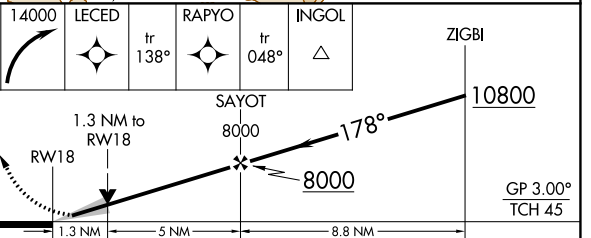
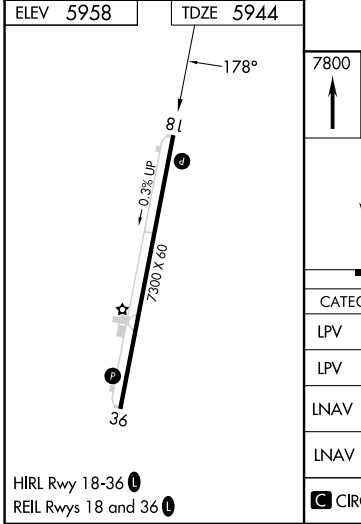
EUREKA (E5U)

RNP APCH - GPS.	MISSED APPROACH: Climb to 7800 then climbing right turn to 14000 direct LECED and on track 138° to RPYO and track 048° to INGOL and hold. #Missed approach requires minimum climb of 390 feet per NM to 10200. *Missed approach requires minimum climb of 390 feet per NM to 9900.
<p><b>V</b> Circling NA for Cat D west of Rwy 18-36. When local altimeter setting not received, procedure NA.</p> <p><b>A</b></p> <p><b>M</b> -17°C</p>	

AWOS-3 <b>128.325</b>	SALT LAKE CENTER <b>132.25 338.35</b>	CTAF <b>122.90</b>
--------------------------	------------------------------------------	-----------------------



ELEV 5958	TDZE 5944
-----------	-----------



CATEGORY	A	B	C	D
LPV DA*	6144-3/4 200 (200-3/4)			
LPV DA	7536-6 1592 (1600-6)			
LNAV MDA#	6400-1 456 (500-1)		6400-1 3/8 456 (500-1 3/8)	
LNAV MDA	7880-1 1/4 1936 (2000-1 1/4)		7880-3 1936 (2000-3)	
CIRCLING	7880-1 1/4 1922 (2000-1 1/4)		7880-3 1922 (2000-3)	