

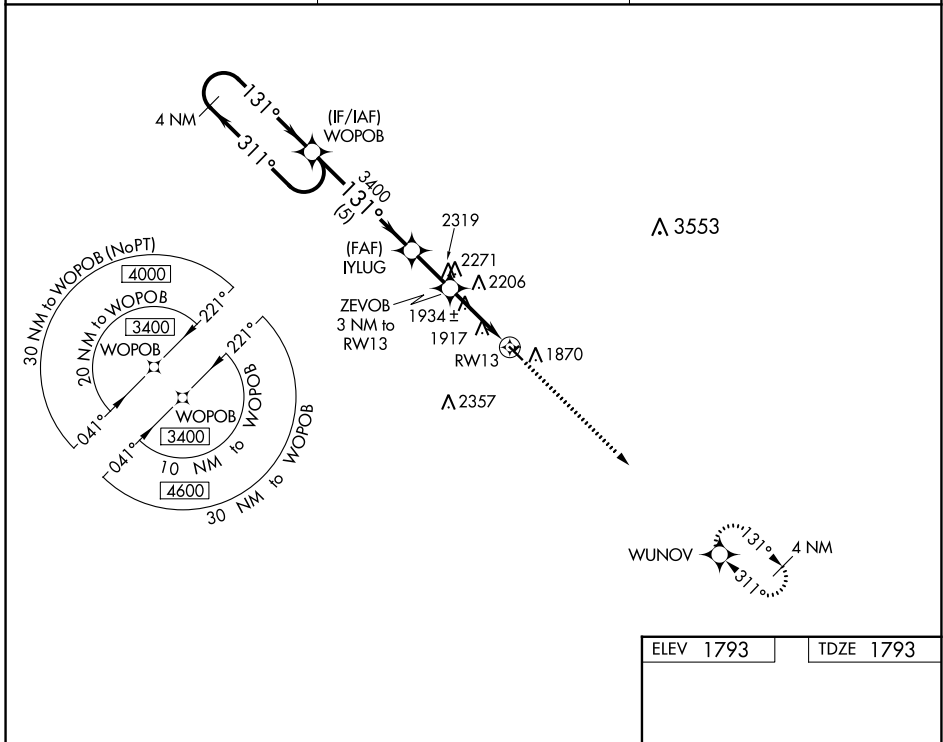
WAAS CH 58340 W13A	APP CRS 131°	Rwy Idg TDZE Apt Elev	3697 1793 1793
--	------------------------	-----------------------------	---

RNAV (GPS) RWY 13

CLARK COUNTY (8D7)

RNP APCH. ▼ Rwy 13 helicopter visibility reduction below 3/4 SM NA. ▲ NA Use Watertown altimeter setting. Circling NA to Rwys 3 and 21.	MISSED APPROACH: Climb to 3400 direct WUNOV and hold.
--	---

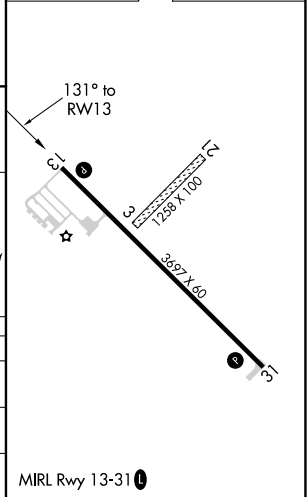
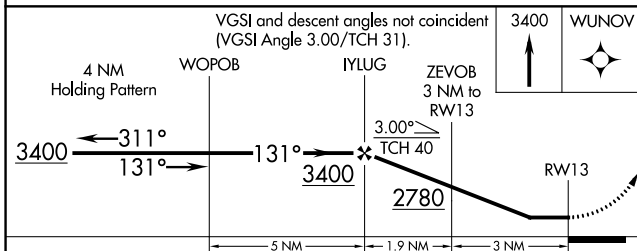
ATY ASOS 126.625	MINNEAPOLIS CENTER 128.5 306.2	UNICOM 122.8 (CTAF) 0
----------------------------	--	---------------------------------



NC-1, 31 OCT 2024 to 28 NOV 2024

NC-1, 31 OCT 2024 to 28 NOV 2024

ELEV 1793	TDZE 1793
-----------	-----------



CATEGORY	A	B	C	D
LP MDA	2260-1	467 (500-1)		NA
LNAV MDA	2400-1	607 (700-1)		NA
CIRCLING	2400-1	607 (700-1)		NA