

WAAS CH <b>68560</b> <b>W34B</b>	APP CRS <b>340°</b>	Rwy Idg TDZE Apt Elev	<b>5020</b> <b>4529</b> <b>4534</b>
--	------------------------	-----------------------------	---

# RNAV (GPS) RWY 34

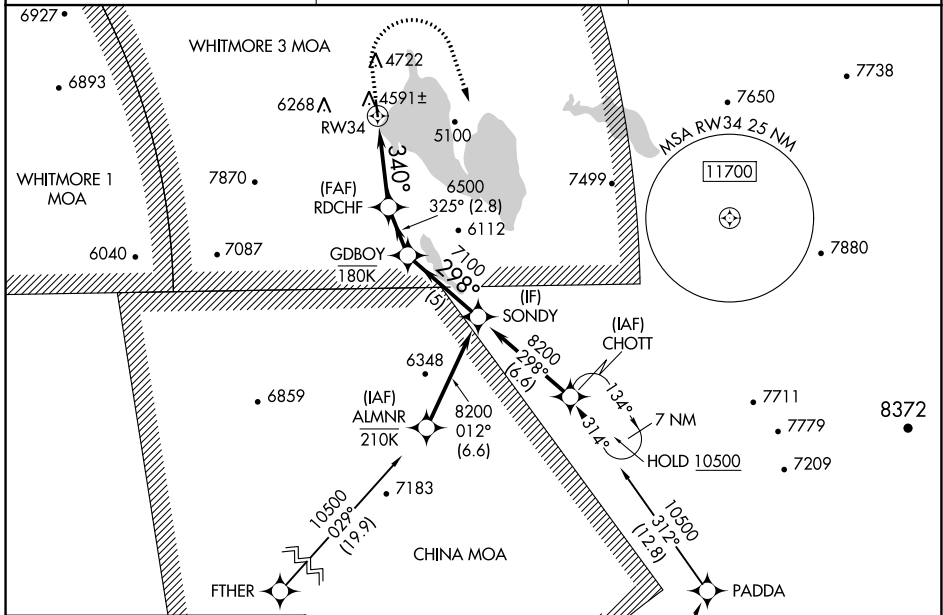
ROGERS FLD (005)

RNP APCH - GPS.

▼ When local altimeter setting not received, procedure NA.  
▲ Rwy 34 helicopter visibility reduction below  $\frac{3}{4}$  SM NA.  
 Circling NA for Cat C west of Rwy 16-34. Circling NA at night.

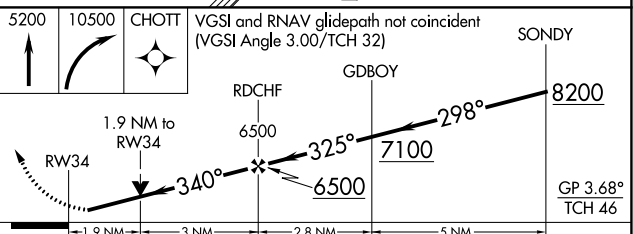
MISSED APPROACH: (Do not exceed 165K until initial turn completion) Climb to 5200 then climbing right turn to 10500 direct CHOTT and hold, continue climb-in-hold to 10500.  
 \*Missed approach requires a minimum climb of 377 feet per NM to 7680 feet.

AWOS-3 <b>118.275</b>	OAKLAND CENTER <b>132.2 350.3</b>	UNICOM <b>122.8(CTAF)</b>
--------------------------	--------------------------------------	------------------------------

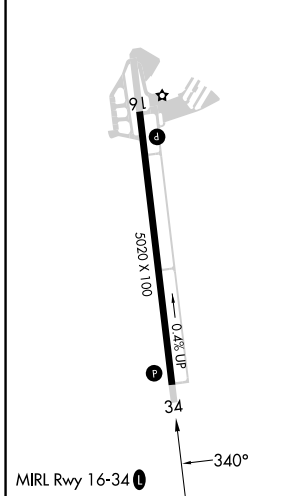


ELEV 4534	TDZE 4529
-----------	-----------

Procedure NA for arrivals at MRGGO on V200 westbound.



CATEGORY	A	B	C	D
LPV DA*	4779- $\frac{3}{4}$	250 (300- $\frac{3}{4}$ )	4829- $\frac{7}{8}$ 300 (300- $\frac{7}{8}$ )	NA
LNAV MDA*	5160-1	631 (700-1)	5160-1 $\frac{3}{4}$ 631 (700-1 $\frac{3}{4}$ )	NA
LNAV MDA	5360-1 831 (900-1)	5360-1 $\frac{1}{4}$ 831 (900-1 $\frac{1}{4}$ )	5360-2 $\frac{1}{2}$ 831 (900-2 $\frac{1}{2}$ )	NA
CIRCLING	5440-1 $\frac{1}{4}$ 906 (1000-1 $\frac{1}{4}$ )	5660-1 $\frac{1}{2}$ 1126 (1200-1 $\frac{1}{2}$ )	5660-3 1126 (1300-3)	NA



SW-2, 31 OCT 2024 to 28 NOV 2024

SW-2, 31 OCT 2024 to 28 NOV 2024