

APP CRS	Rwy Idg	<b>3242</b>
<b>178°</b>	TDZE	<b>27</b>
	Apt Elev	<b>27</b>

# RNAV (GPS) RWY 18

EEK (EEK) (PAEE)

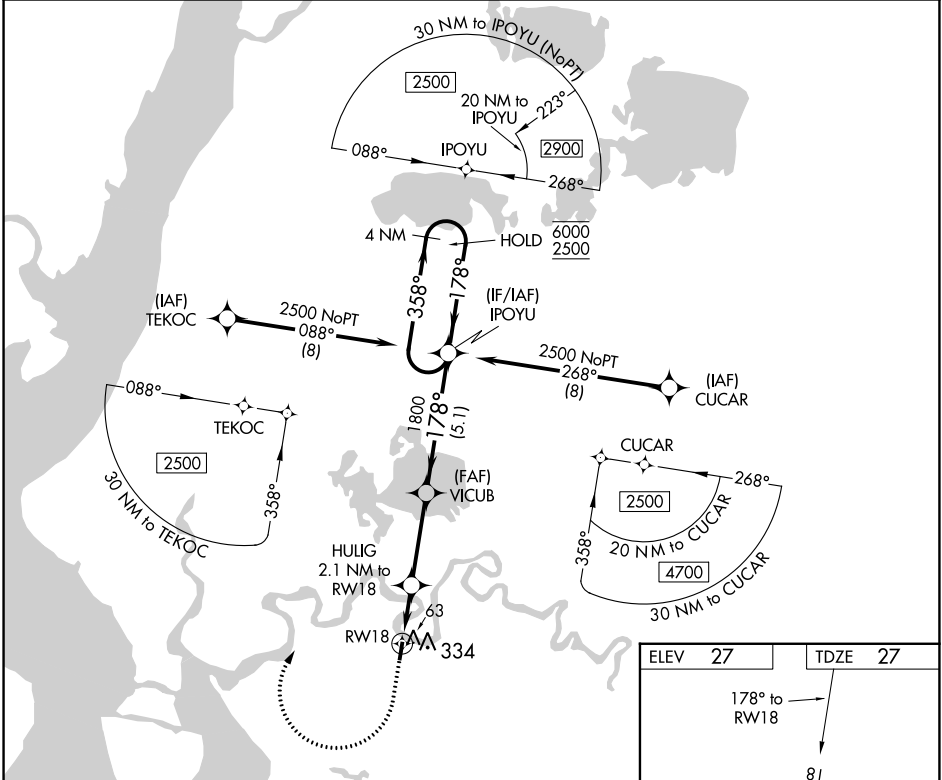
RNP APCH.

▼  
▲ NA Use Bethel altimeter setting, when not received procedure NA.

MISSED APPROACH: Climb to 600 then climbing right turn to 2500 direct IPOYU and hold.

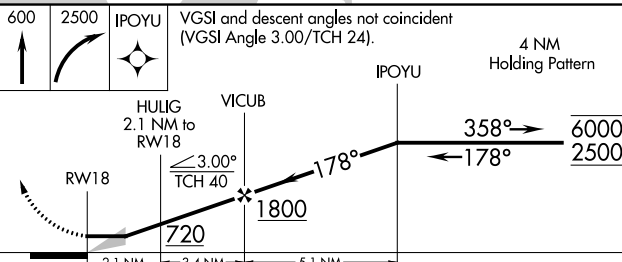
ANCHORAGE CENTER  
**125.2 372.0**

CTAF  
**122.8**

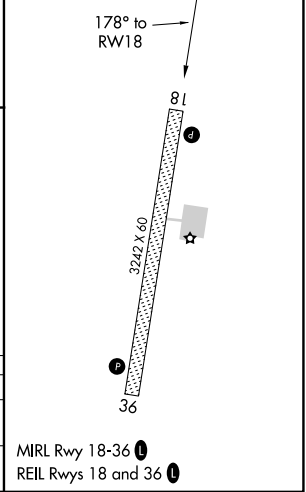


AK, 31 OCT 2024 to 26 DEC 2024

AK, 31 OCT 2024 to 26 DEC 2024



ELEV 27	TDZE 27
---------	---------



CATEGORY	A	B	C	D
LNVA MDA	420-1 393 (400-1)		NA	
CIRCLING	740-1 713 (800-1)		NA	

MRL Rwy 18-36  
REIL Rwy 18 and 36