

APP CRS	Rwy Idg	N/A
066°	TDZE	N/A
	Apt Elev	654

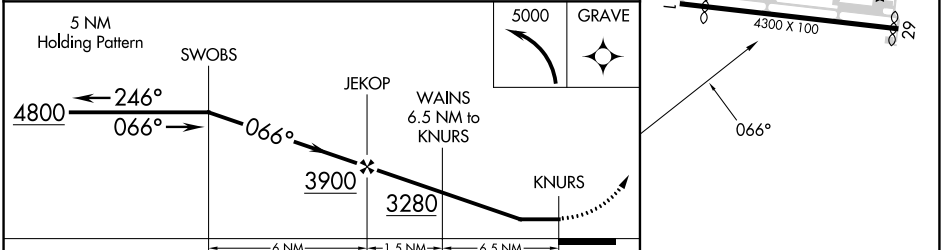
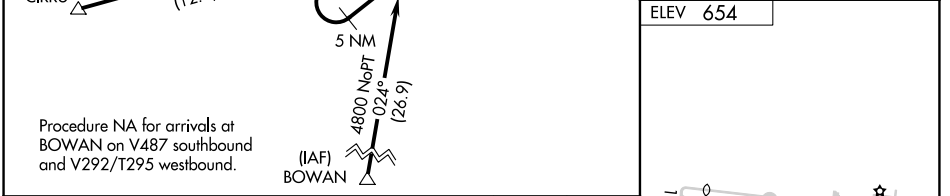
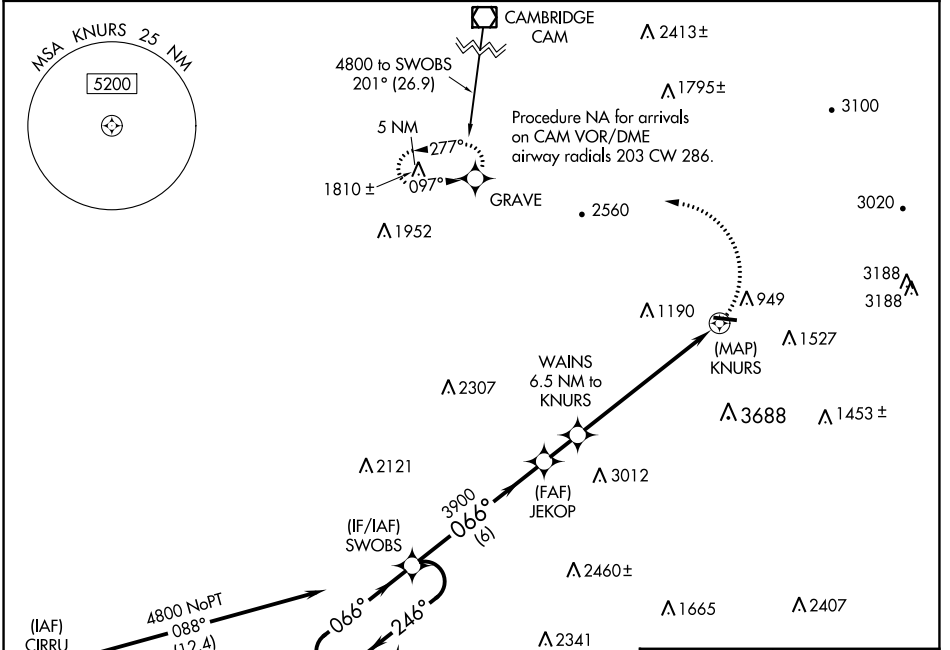
# RNAV (GPS)-A

HARRIMAN-AND-WEST (A/QW)

**⚠** When local altimeter setting not received, use Bennington altimeter setting and increase all MDA 60 feet. Circling NA south of Rwy 11-29. DME/DME RNP-0.3 NA. Procedure NA at night.

**⚠** MISSED APPROACH: Climbing left turn to 5000 direct GRAVE and hold, continue climb-in-hold to 5000.

ASOS <b>134.775</b>	ALBANY APP CON <b>132.825 307.2</b>	UNICOM <b>122.8 (CTAF) 0</b>
------------------------	--	---------------------------------



CATEGORY	A	B	C	D
<b>C</b> CIRCLING	2740-1¼ 2086 (2100-1¼)	2740-1½ 2086 (2100-1½)	2780-3 2126 (2200-3)	NA

NE-1, 31 OCT 2024 to 28 NOV 2024

NE-1, 31 OCT 2024 to 28 NOV 2024