

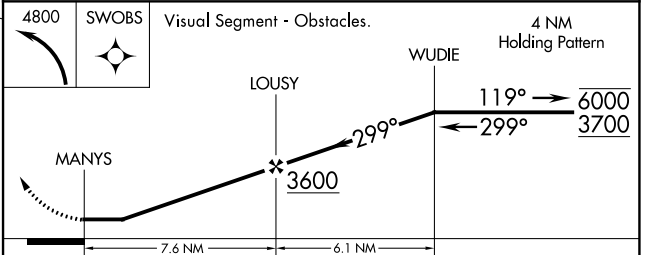
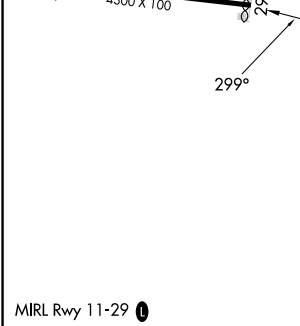
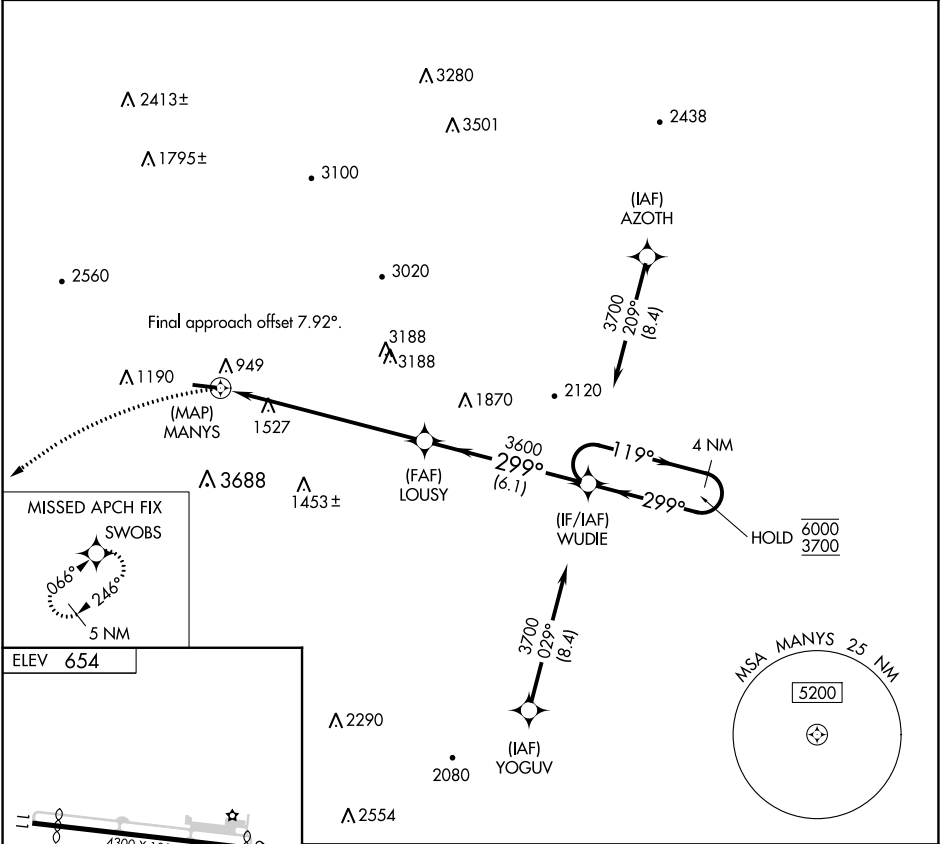
APP CRS	Rwy Idg	N/A
299°	TDZE	N/A
	Apt Elev	654

RNAV (GPS)-B

HARRIMAN-AND-WEST (A.Q.W)

RNP APCH.	<p>⚠ Circling NA south of Rwy 11-29. Procedure NA at night. ⚠ Rwy 29 helicopter visibility reduction below 1 SM NA.</p>	<p>MISSED APPROACH: Climbing left turn to 4800 direct SWOBS and hold.</p>

ASOS 134.775	ALBANY APP CON 132.825 307.2	UNICOM 122.8 (CTAF) 0
------------------------	--	---------------------------------



CATEGORY	A	B	C	D
C CIRCLING	3280-1¼ 2626 (2700-1¼)	3280-1½ 2626 (2700-1½)	3280-3 2626 (2700-3)	NA

NE-1, 31 OCT 2024 to 28 NOV 2024

NE-1, 31 OCT 2024 to 28 NOV 2024