

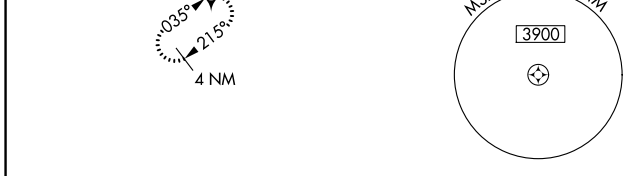
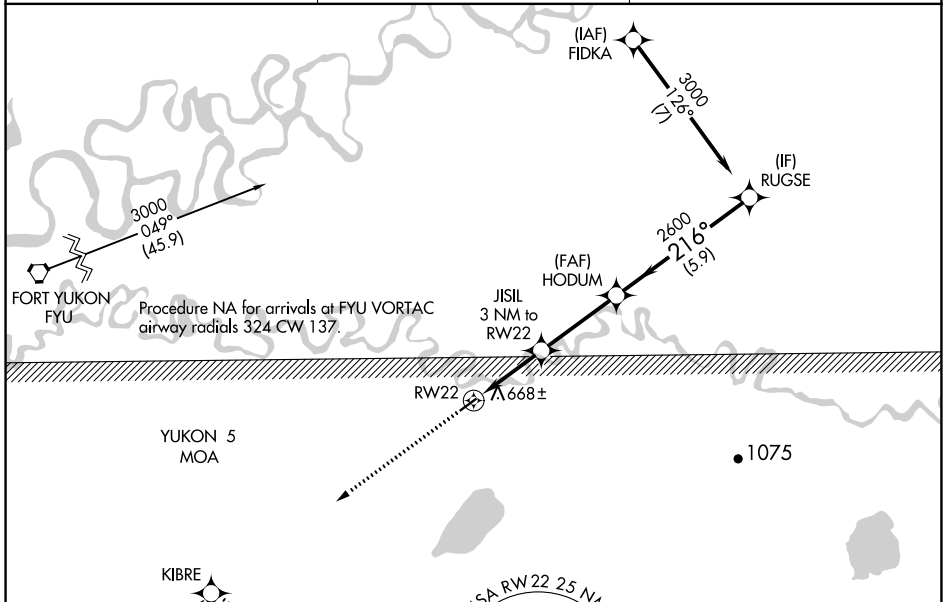
APP CRS <b>216°</b>	Rwy Idg TDZE Apt Elev	<b>3500</b> <b>545</b> <b>549</b>
------------------------	-----------------------------	---

# RNAV (GPS) RWY 22

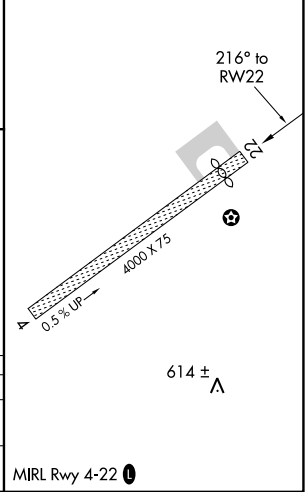
CHALKYITSIK (CIK) (PACI)

RNP APCH.	<p>▼ Procedure NA at night.</p> <p>▲ NA Rwy 22 helicopter visibility reduction below 1 SM NA. Use Fort Yukon altimeter setting.</p>	MISSED APPROACH: Climb to 3000 direct KIBRE and hold.
-----------	---	---

FYU/PFYU AWOS-3P <b>125.8</b>	ANCHORAGE CENTER <b>135.0 225.4</b>	CTAF <b>122.9</b>
----------------------------------	--	----------------------



ELEV 549	TDZE 545
----------	----------



3000	KIBRE	HODUM	RUGSE
↑	✧		
		JISIL 3 NM to RWY 22	3000
		≤ 3.00° TCH 40	2600
		1540	
		3 NM	3.3 NM
			5.9 NM

CATEGORY	A	B	C	D
RNAV MDA	1020-1	475 (500-1)	1020-1 <sup>3</sup> / <sub>8</sub>	475 (500-1 <sup>3</sup> / <sub>8</sub> )
CIRCLING	1080-1 531 (600-1)	1160-1 611 (700-1)	1200-1 <sup>3</sup> / <sub>4</sub> 651 (700-1 <sup>3</sup> / <sub>4</sub> )	1360-2 <sup>3</sup> / <sub>4</sub> 811 (900-2 <sup>3</sup> / <sub>4</sub> )

MIRL Rwy 4-22

AK, 31 OCT 2024 to 26 DEC 2024

AK, 31 OCT 2024 to 26 DEC 2024