



APP CRS	Rwy Idg	<b>4001</b>
<b>049°</b>	TDZE	<b>448</b>
	Apt Elev	<b>448</b>

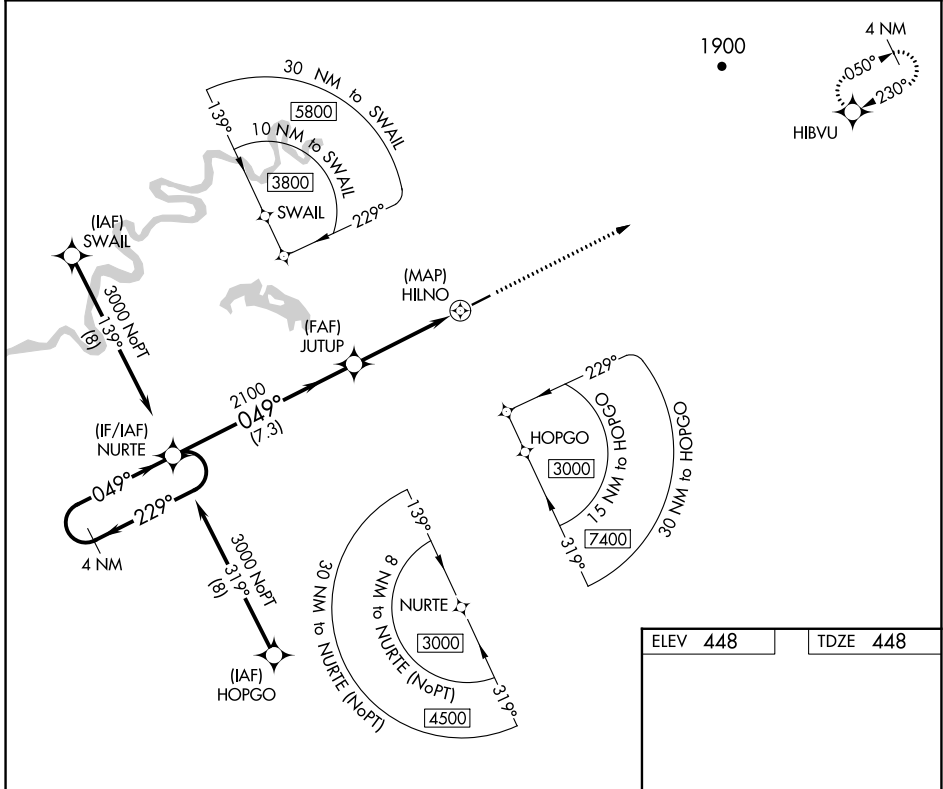
# RNAV (GPS) RWY 5

NIKOLAI (F/SP)(P/AFS)

RNP APCH.  
 Rwy 5 helicopter visibility reduction below 3/4 SM NA.

MISSED APPROACH: Climb to 5000 direct HIBVU and hold, continue climb-in-hold to 5000.

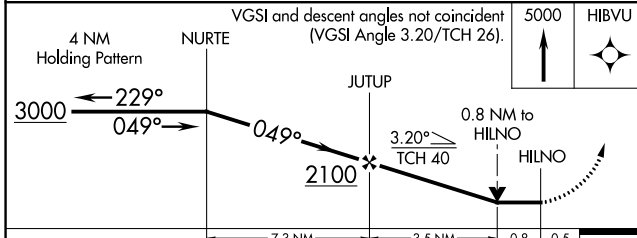
AWOS-3P <b>118.325</b>	ANCHORAGE CENTER <b>128.1 353.8</b>	CTAF <b>122.8</b> 
---------------------------	--	--




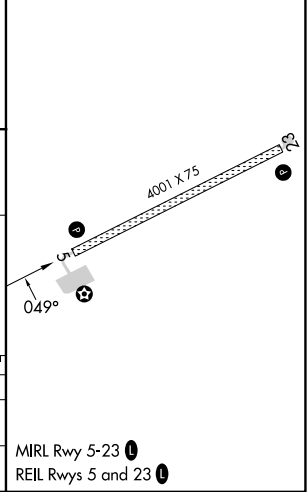
AK, 31 OCT 2024 to 26 DEC 2024


AK, 31 OCT 2024 to 26 DEC 2024

ELEV 448	TDZE 448
----------	----------



CATEGORY	A	B	C	D
LNVA MDA	900-1	452 (500-1)	900-1 3/8	452 (500-1 3/8)
 CIRCLING	900-1	452 (500-1)	900-1 1/2	1000-2
			452 (500-1 1/2)	552 (600-2)



MIRL Rwy 5-23   
 REIL Rws 5 and 23 