

WAAS CH 65921 W19A	APP CRS 190°	Rwy Idg 3994
		TDZE 553
		Apt Elev 553

RNAV (GPS) RWY 19

HOWARD COUNTY (M77)

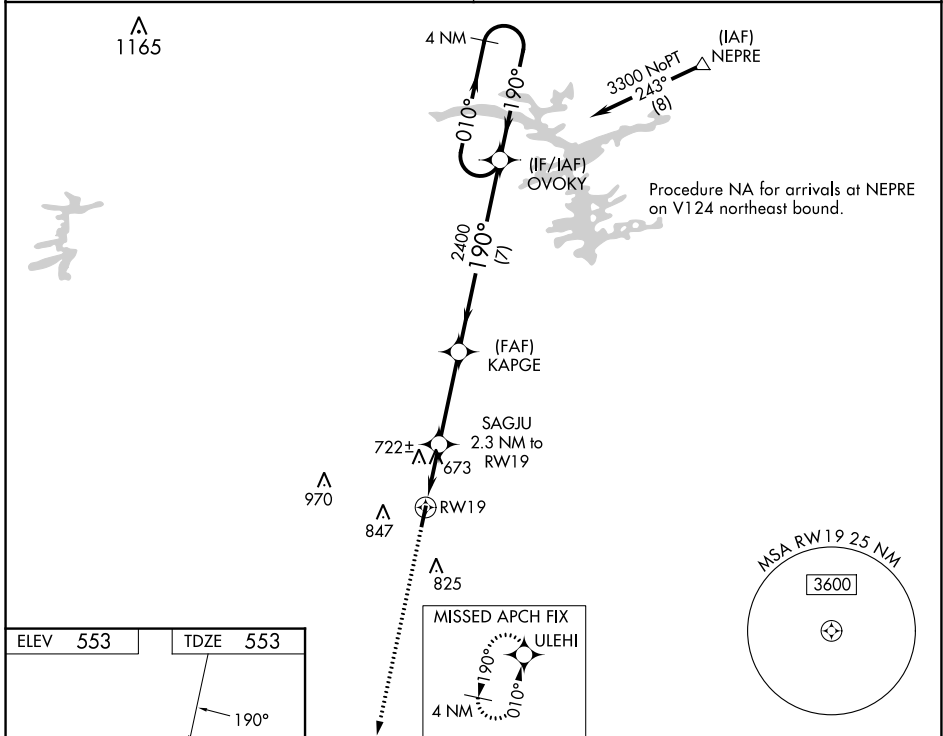
RNP APCH.

▼ Procedure NA at night. Rwy 19 helicopter visibility reduction below 1 SM NA.
▲ NA Use DE Queen altimeter setting; when not received, use Texarkana altimeter setting and increase all MDA 20 feet.

MISSED APPROACH: Climb to 3500 direct ULEHI and hold.

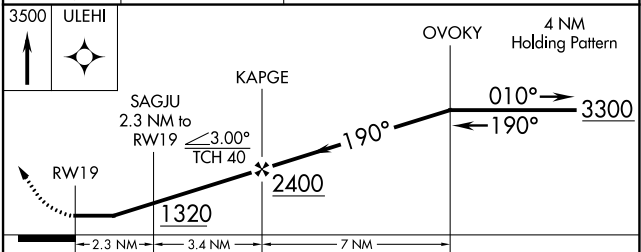
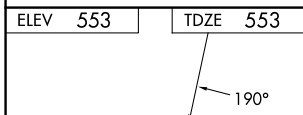
FORT WORTH CENTER
123.925 269.475

CTAF
122.9



SC-1, 31 OCT 2024 to 28 NOV 2024

SC-1, 31 OCT 2024 to 28 NOV 2024



CATEGORY	A	B	C	D
LP MDA	1080-1	527 (600-1)		NA
LNAV MDA	1080-1	527 (600-1)		NA
CIRCLING	1100-1 547 (600-1)	1240-1 687 (700-1)		NA

MIRL Rwy 1-19