

APP CRS	Rwy Idg	N/A
<b>333°</b>	TDZE	N/A
	Apt Elev	<b>63</b>

# RNAV (GPS)-A

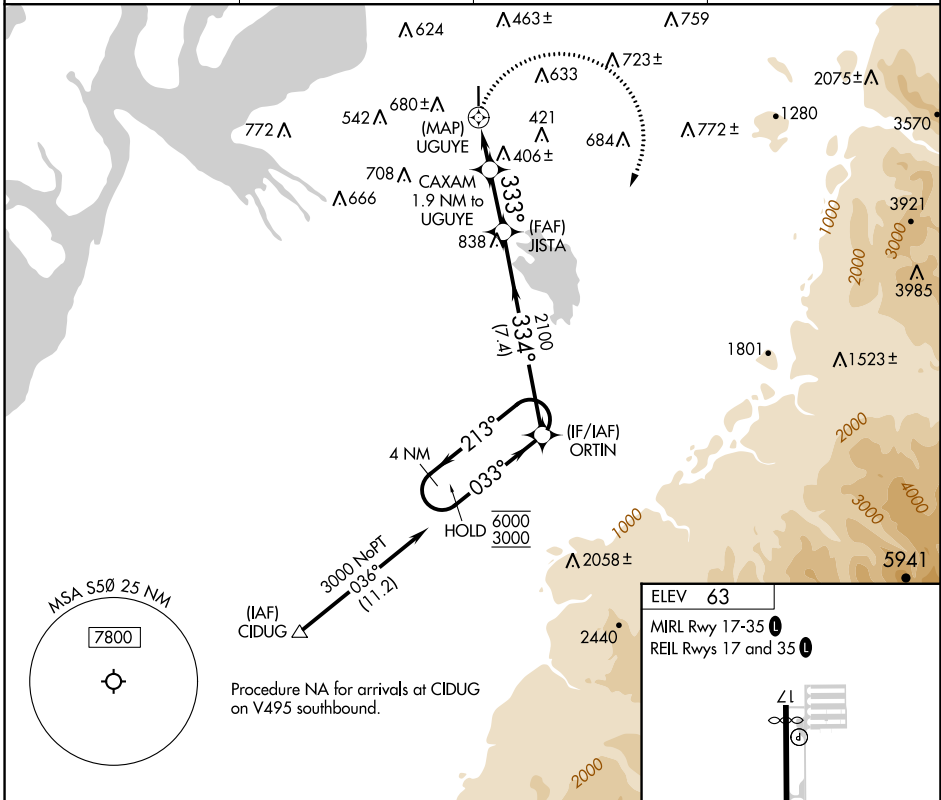
AUBURN MUNI (S50)

RNP APCH - GPS.

**NA** Circling NA west of Rwy 17-35. Rwy 17 and 35 helicopter visibility reduction below 1 SM NA. When Circling to Rwy 17, 35 at night, operational VGSI required, remain on or above VGSI glidepath until threshold. Use Seattle-Tacoma Intl altimeter setting. Procedure NA at night when VGSI inoperative.

**MISSED APPROACH:** Climbing right turn to 3000 direct ORTIN and hold.

SEA ASOS <b>118.0</b>	SEATTLE APP CON <b>123.85</b>	CLNC DEL <b>123.85</b>	UNICOM <b>122.975</b> (CTAF) <b>1</b>
--------------------------	----------------------------------	---------------------------	--



NW-1, 31 OCT 2024 to 28 NOV 2024

NW-1, 31 OCT 2024 to 28 NOV 2024

3000	ORTIN	ORTIN	ORTIN	ORTIN
		JISTA	4 NM Holding Pattern	
	UGUYE	CAXAM 1.9 NM to UGUYE	2100	6000
		333°	334°	213°
		1140	3000	3000
		1.9 NM	2.3 NM	7.4 NM
CATEGORY	A	B	C	D
<b>CIRCLING</b>	920-1¼ 857 (900-1¼)	1040-1½ 977 (1000-1½)	NA	NA

