

WAAS CH 48814 W09A	APP CRS 091°	Rwy Idg TDZE Apt Elev	3401 244 244
--	------------------------	-----------------------------	---

RNAV (GPS) RWY 9

CHUATHBALUK (9A3) (PACH)

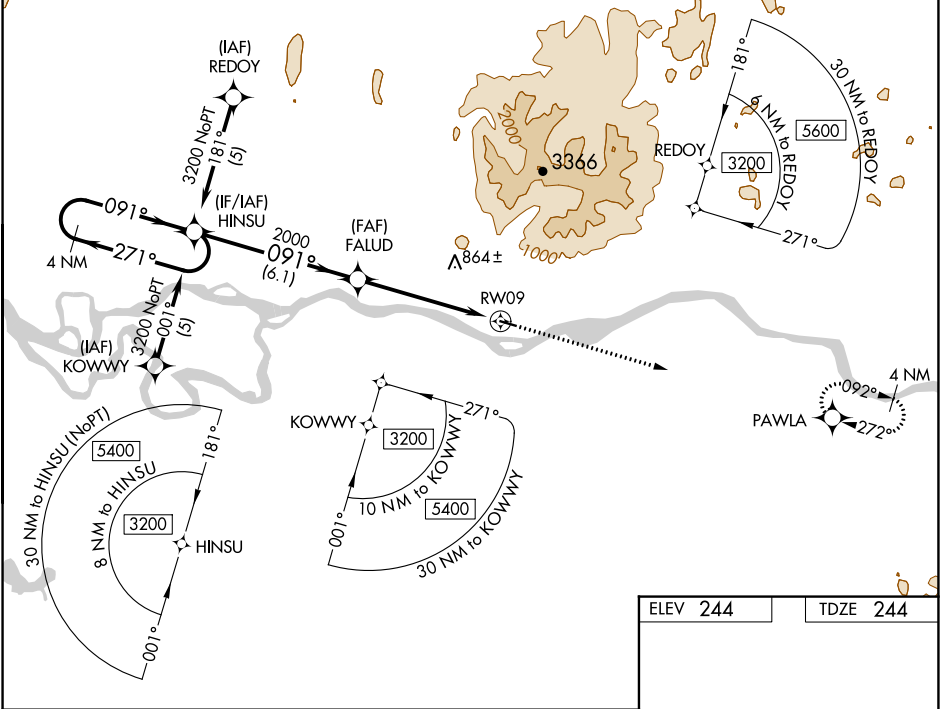
NA
-31°C

Circling NA north of Rwy 9-27. DME/DME RNP- 0.3 NA. Visibility reduction by helicopters NA. Use Aniak altimeter setting; when not received, use Kalskag altimeter setting and increase all DA 58 feet and MDA 60 feet and increase LPV all Cats visibility ¼ mile, and increase LNAV and circling Cat C visibility ¼ mile.

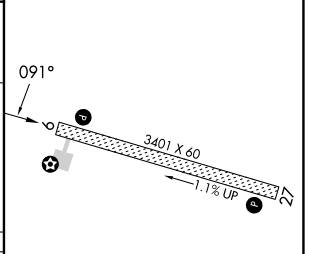
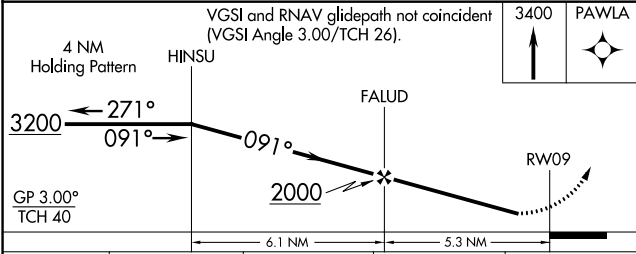
MISSED APPROACH: Climb to 3400 direct PAWLA and hold.

ANCHORAGE CENTER
118.15 251.05

CTAF
122.9



ELEV 244	TDZE 244
----------	----------



CATEGORY	A	B	C	D
LPV DA	652-1½ 408 (500-1½)			NA
LNAV MDA	1000-1 756 (800-1)	1000-1¼ 756 (800-1¼)	1000-2¼ 756 (800-2¼)	NA
CIRCLING	1000-1 756 (800-1)	1000-1¼ 756 (800-1¼)	1000-2¼ 756 (800-2¼)	NA

MIRL Rwy 9-27

REIL Rws 9 and 27

AK, 31 OCT 2024 to 26 DEC 2024

AK, 31 OCT 2024 to 26 DEC 2024