

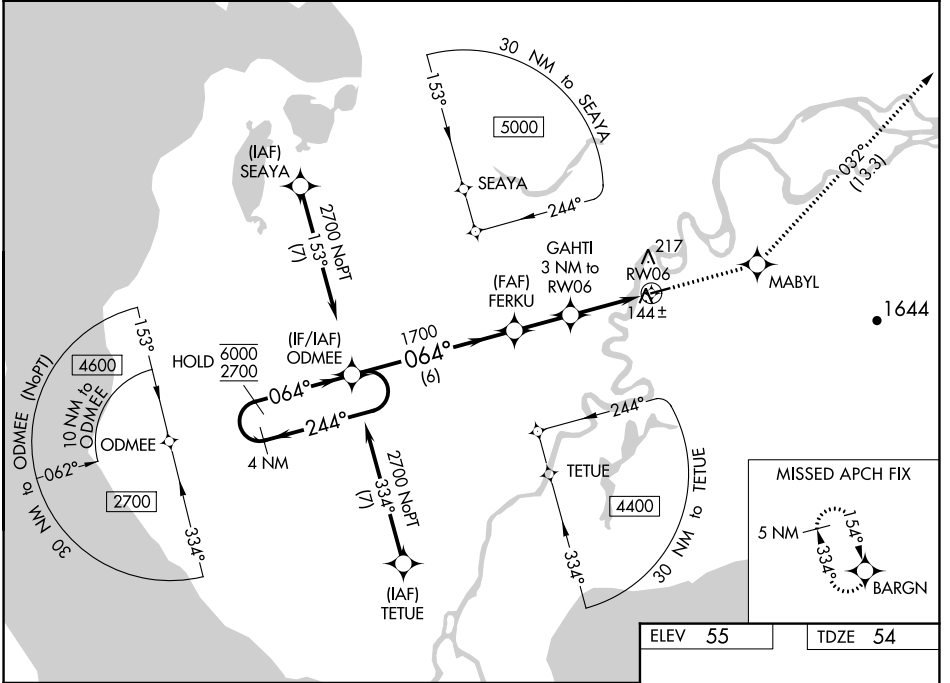
WAAS CH <b>78213</b> <b>W06A</b>	APP CRS <b>064°</b>	Rwy Idg <b>4000</b> TDZE <b>54</b> Apt Elev <b>55</b>
--	------------------------	---

# RNAV (GPS) RWY 6

ROBERT/BOB/CURTIS MEML (D76) (PFNO)

RNP APCH.	MISSED APPROACH: Climb to 4400 direct MABYL and on track 032° to BARGN and hold, continue climb-in-hold to 4400.
<p>▼ Rwy 6 helicopter visibility reduction below 3/4 SM NA.</p> <p>▲ For uncompensated Baro-VNAV systems, LNAV/VNAV NA below -22°C or above 54°C.</p> <p>⊞ -23°C</p>	

AWOS-3P <b>120.0</b>	ANCHORAGE CENTER <b>119.2 263.0</b>	CTAF <b>122.7 0</b>
-------------------------	--	------------------------

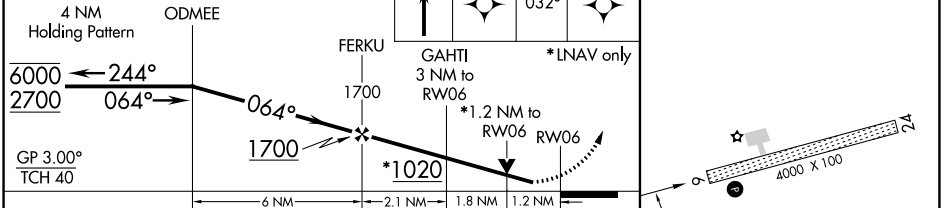


AK, 31 OCT 2024 to 26 DEC 2024

AK, 31 OCT 2024 to 26 DEC 2024

VGSI and RNAV glidepath not coincident (VGSI Angle 3.00/TCH 25).

4400	MABYL	tr 032°	BARGN
------	-------	---------	-------



CATEGORY	A	B	C	D
LPV DA	304-1		250 (300-1)	
LNAV/VNAV DA	355-1		301 (300-1)	
LNAV MDA	460-1 406 (500-1)		460-1 1/8 406 (500-1 1/8)	
CIRCLING	520-1 465 (500-1)		520-1 1/2 760-2 1/4 465 (500-1 1/2) 705 (800-2 1/4)	

ELEV 55	TDZE 54
---------	---------

MIRL Rwy 6-24 0