

APP CRS	Rwy ldg	3189
195°	TDZE	539
	Apt Elev	539

RNAV (GPS) RWY 19

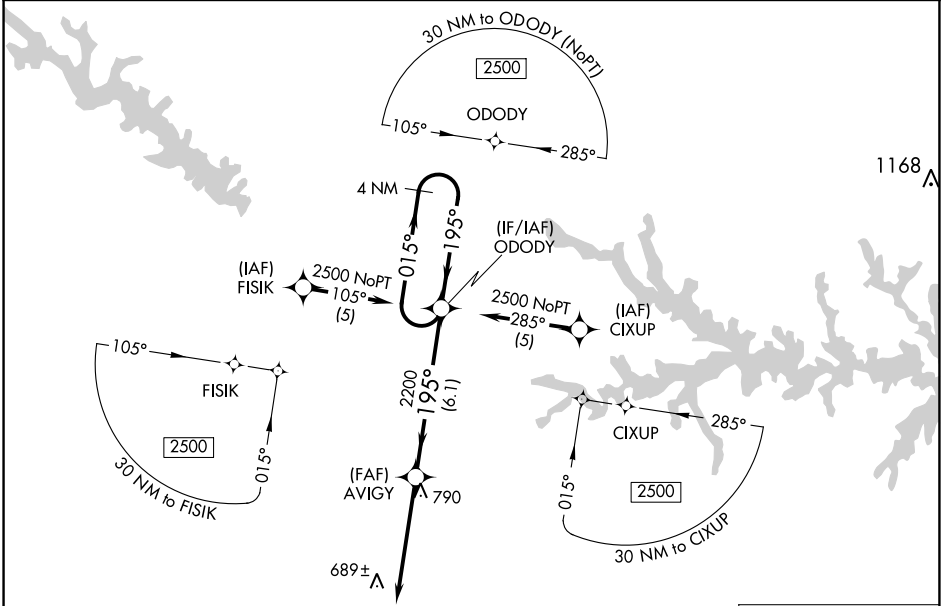
SALUDA COUNTY (6J4)

▽ DME/DME RNP-0.3 NA. Procedure NA at night. Visibility reduction by helicopters NA. Use Aiken altimeter setting, when not received, use Augusta Rgnl altimeter setting and increase all MDA's 100 feet, increase LNAV Cat C visibility ¼ SM and Circling Cat C visibility ½ SM.

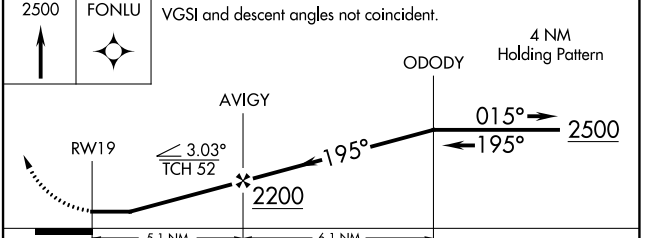
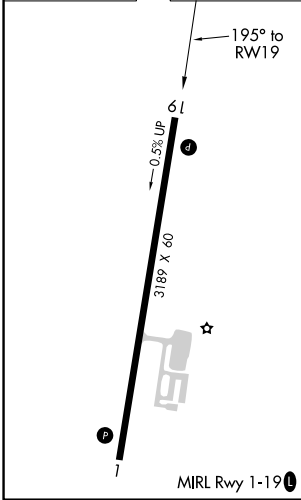
△ NA

MISSED APPROACH: Climb to 2500 direct FONLU and hold.

AIK AWOS-3 118.025	AUGUSTA APP CON ★ 119.15	CTAF 122.9 📵
------------------------------	------------------------------------	-------------------------------



ELEV 539	TDZE 539
----------	----------



CATEGORY	A	B	C	D
LNAV MDA	1060-1	521 (600-1)	1060-1½ 521 (600-1½)	NA
CIRCLING	1100-1 561 (600-1)	1160-1 621 (700-1)	1180-1¾ 641 (700-1¾)	NA

SE-2, 31 OCT 2024 to 28 NOV 2024

SE-2, 31 OCT 2024 to 28 NOV 2024