

WAAS CH <b>81838</b> <b>W22A</b>	APP CRS <b>220°</b>	Rwy Idg TDZE Apt Elev	<b>2999</b> <b>1371</b> <b>1371</b>
--	------------------------	-----------------------------	---

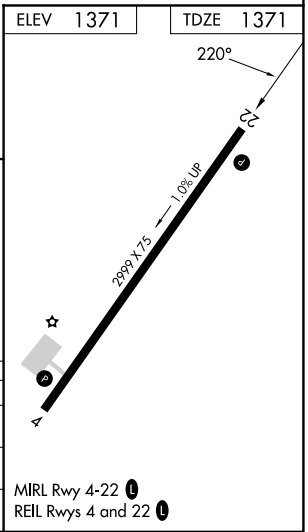
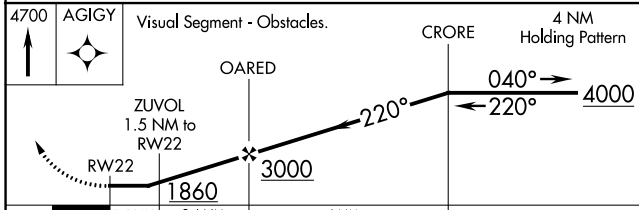
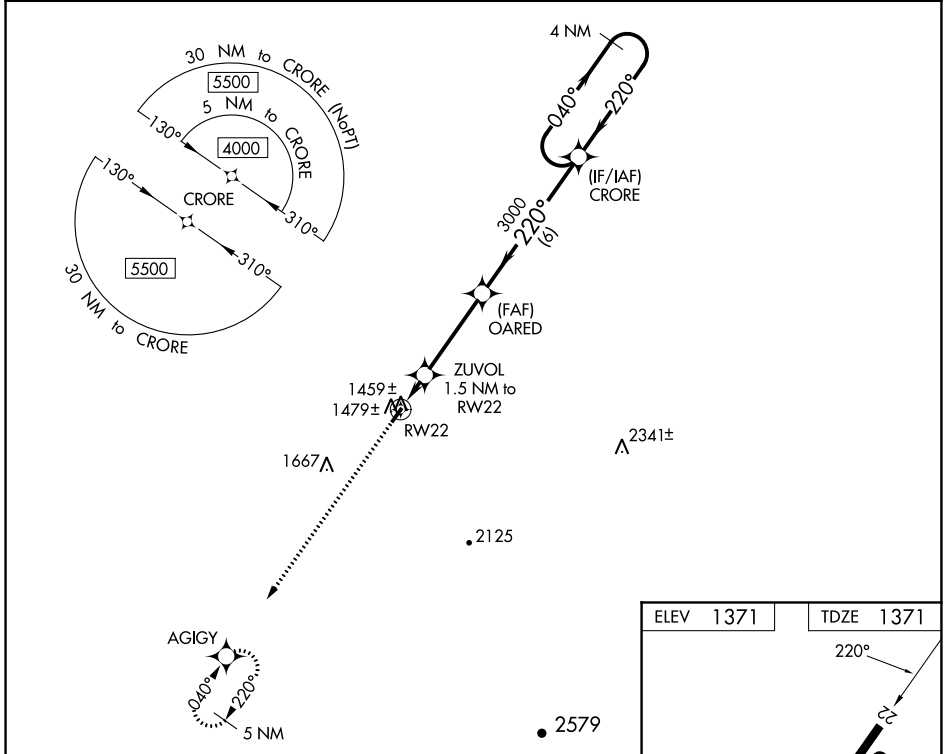
# RNAV (GPS) RWY 22

MC CREARY COUNTY (18I)

**⚠ NA** DME/DME RNP-0.3 NA. Procedure NA at night. Helicopter visibility reduction below 1 SM NA. Use Williamsburg altimeter setting, when not received, use London altimeter setting and increase all MDA 40 feet and LP Cat C visibility 1/8 mile and Circling Cat C visibility 1/4 mile.

MISSED APPROACH: Climb to 4700 direct AGIGY and hold, continue climb-in-hold to 4700.

INDIANAPOLIS CENTER <b>124.625 371.925</b>	UNICOM <b>123.05 (CTAF) 0</b>
---	----------------------------------



CATEGORY	A	B	C	D
LP MDA	1780-1	409 (500-1)	1780-1¼ 409 (500-1¼)	NA
LNAV MDA	1800-1	429 (500-1)	1800-1⅜ 429 (500-1⅜)	NA
<b>C</b> CIRCLING	1880-1 509 (600-1)	2000-1 629 (700-1)	2020-1¾ 649 (700-1¾)	NA

MIRL Rwy 4-22 0  
REIL Rws 4 and 22 0

SE-1, 31 OCT 2024 to 28 NOV 2024

SE-1, 31 OCT 2024 to 28 NOV 2024