

LOC/DME I-BXM 109.3 Chan 30	APP CRS 012°	Rwy Idg 8000 TDZE 63 Apt Elev 75
------------------------------------------	------------------------	-------------------------------------------------------------

ILS or LOC RWY 1R

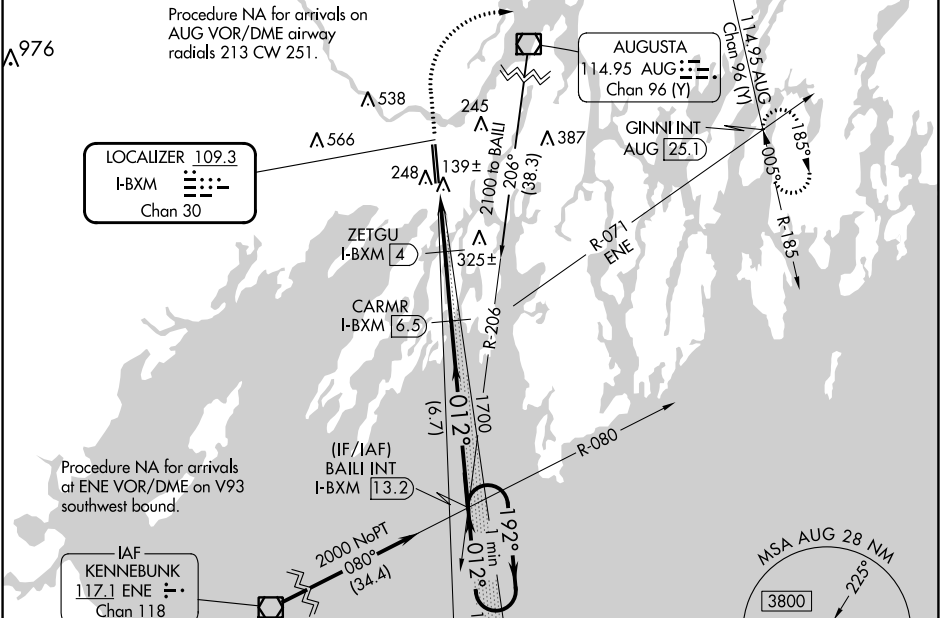
BRUNSWICK EXEC (BXM)

▼ DME required. VDP NA when using Portland altimeter setting. When local altimeter setting not received, use Portland altimeter setting and increase S-ILS 1R DA to 314; increase all MDA 60 feet; increase S-LOC 1R Cats C/D visibilities 1/2 SM and Circling Cat C/D visibilities 1/4 SM.

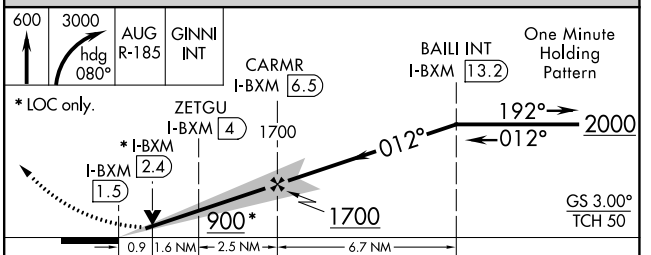
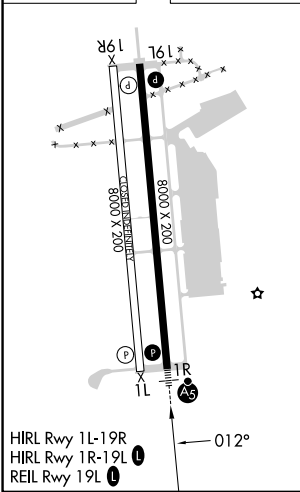


MISSED APPROACH: Climb to 600 then climbing right turn to 3000 on heading 080° and AUG VOR/DME R-185 to GINNI INT/AUG 25.1 DME and hold.

AWOS-3PT 134.875	PORTLAND APP CON ★ (112°-292°) 119.75 269.35 (293°-111°) 120.4 299.2	CLNC DEL 123.65	UNICOM 122.725 (CTAF)
----------------------------	---------------------------------------------------------------------------------------	---------------------------	---------------------------------



ELEV	75	TDZE	63
------	----	------	----



CATEGORY	A	B	C	D
S-ILS 1R		263-1/2	200 (200-1/2)	
S-LOC 1R		400-1/2	337 (400-1/2)	
C CIRCLING	560-1	485 (500-1)	840-2 1/4 765 (800-2 1/4)	840-2 1/2 765 (800-2 1/2)

NE-1, 31 OCT 2024 to 28 NOV 2024

NE-1, 31 OCT 2024 to 28 NOV 2024