

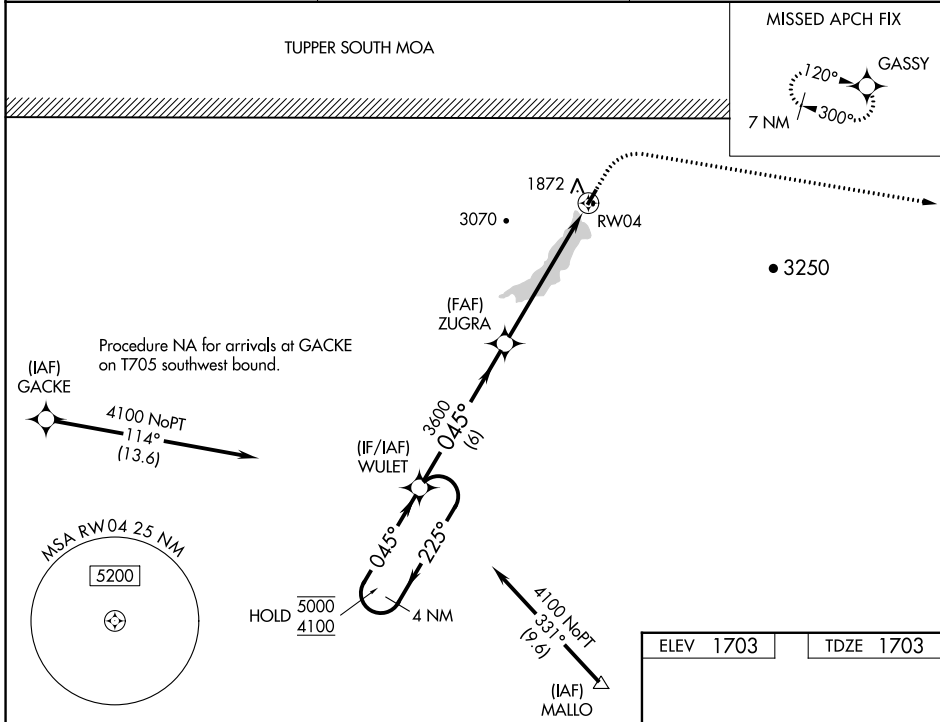
WAAS CH 86328 W04A	APP CRS 045°	Rwy Idg TDZE Apt Elev	3016 1703 1703
--	------------------------	-----------------------------	---

RNAV (GPS) RWY 4

PISECO (K09)

RNP APCH - GPS.	<p>Procedure NA at night. Rwy 4 helicopter visibility reduction below 1 SM NA. Use Griffiss Intl altimeter setting. Circling NA west of Rwy 4-22. Circling NA for Cat C.</p>	<p>MISSED APPROACH: Climb to 3500 then climbing right turn to 7000 direct GASSY and hold.</p>
-----------------	--	---

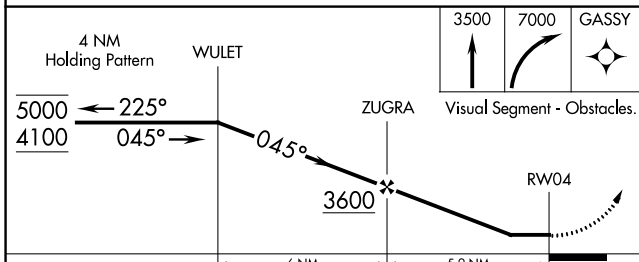
RME ASOS 118.7	BOSTON CENTER 135.25 377.1	UNICOM 122.8 (CTAF)
--------------------------	--------------------------------------	-------------------------------



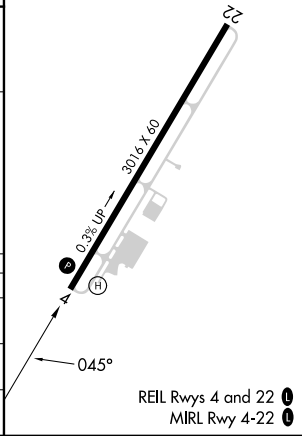
NE-2, 31 OCT 2024 to 28 NOV 2024

NE-2, 31 OCT 2024 to 28 NOV 2024

ELEV 1703	TDZE 1703
-----------	-----------



CATEGORY	A	B	C	D
LP MDA	2680-1¼ 977 (1000-1¼)	2680-1½ 977 (1000-1½)	2680-3 977 (1000-3)	NA
LNAV MDA	3400-1¼ 1697 (1700-1¼)	3400-1½ 1697 (1700-1½)	3400-3 1697 (1700-3)	NA
CIRCLING	3400-1¼ 1697 (1700-1¼)	3400-1½ 1697 (1700-1½)	3520-3 1817 (1900-3)	NA



REIL Rws 4 and 22
MIRL Rwy 4-22