

APP CRS	Rwy Idg	<b>3199</b>
<b>087°</b>	TDZE	<b>752</b>
	Apt Elev	<b>752</b>

# RNAV (GPS) RWY 9

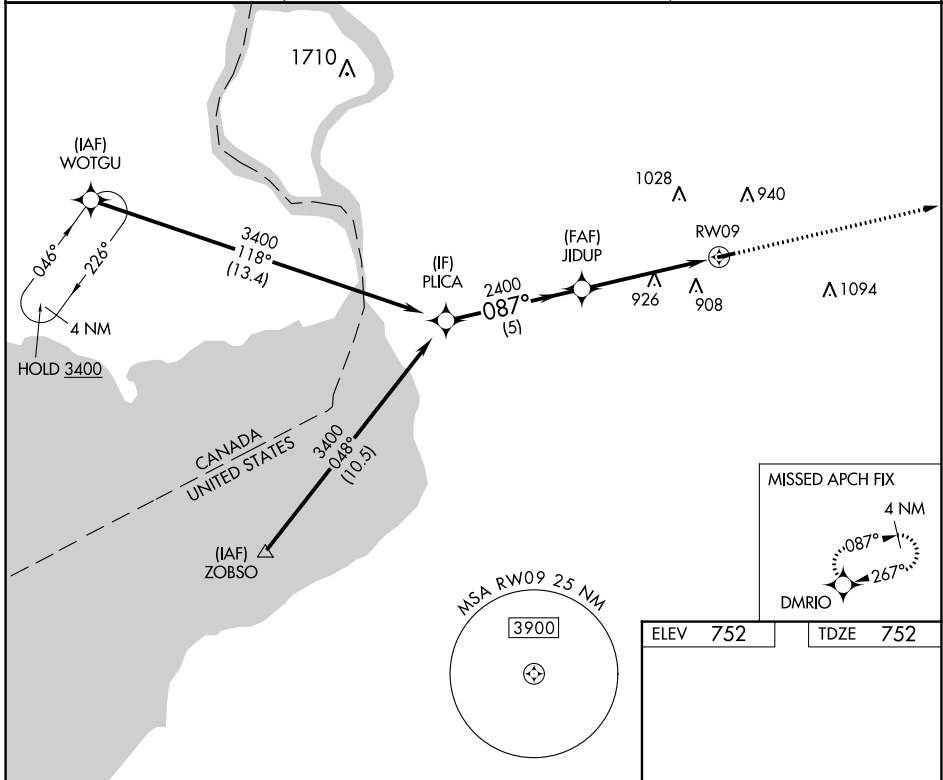
BUFFALO-LANCASTER RGNL (BQR)

RNP APCH - GPS.

**⚠ NA** When Circling to Rwy 27 at night, operational VGSI required, remain on or above VGSI glidepath until threshold. Rwy 9 helicopter visibility reduction below 3/4 SM NA. Use Buffalo Niagara Intl altimeter setting.

MISSED APPROACH: Climb to 3400 direct DMRIO and hold, continue climb-in-hold to 3400.

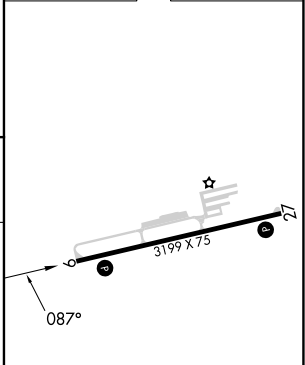
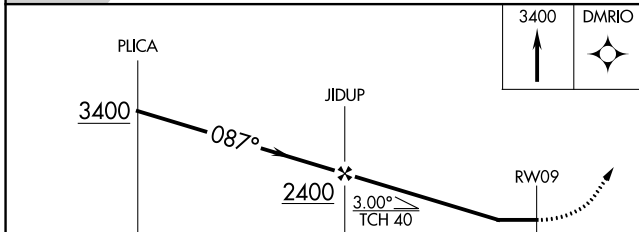
BUF ASOS <b>135.35</b>	BUFFALO APP CON <b>126.15 263.125</b>	UNICOM <b>123.05 (CTAF) 0</b>
---------------------------	--	----------------------------------



NE-2, 31 OCT 2024 to 28 NOV 2024

NE-2, 31 OCT 2024 to 28 NOV 2024

ELEV 752	TDZE 752
----------	----------



CATEGORY	A	B	C	D
LNVA MDA	1200-1	448 (500-1)		NA
CIRCLING	1220-1 468 (500-1)	1320-1 568 (600-1)		NA

MIRL Rwy 9-27 **0**  
REIL Rws 9 and 27 **0**