

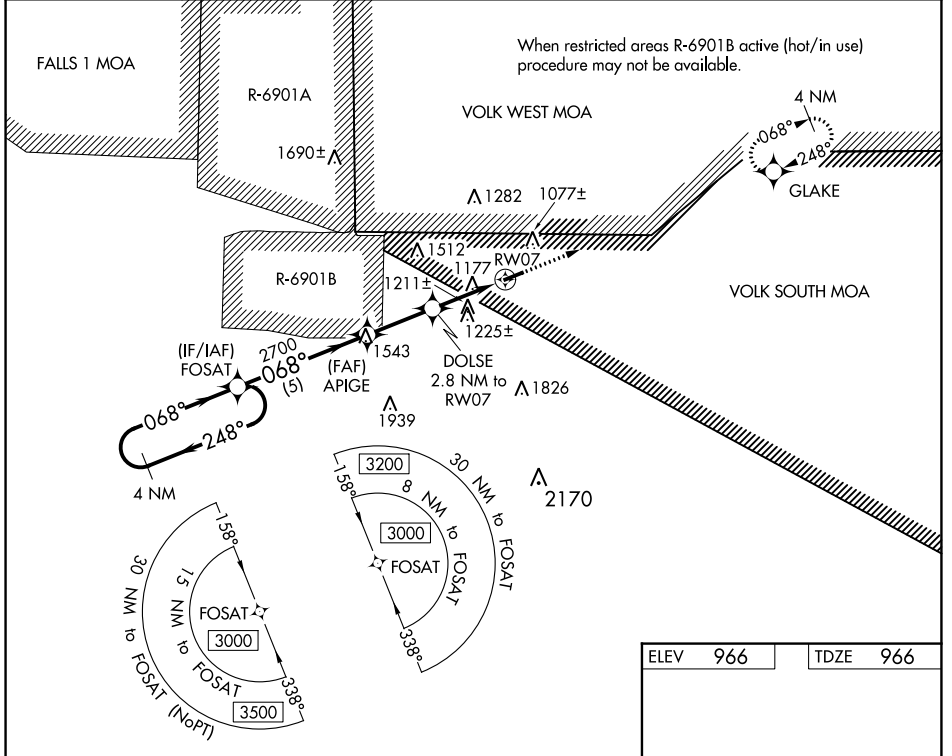
WAAS CH <b>97737</b> <b>W07A</b>	APP CRS <b>068°</b>	Rwy Idg TDZE Apt Elev	<b>3900</b> <b>966</b> <b>966</b>
--	------------------------	-----------------------------	---

# RNAV (GPS) RWY 7

BLOYER FLD (Y72)

**NA** DME/DME RNP-0.3 NA. Use Camp Douglas altimeter setting; when not received, use Sparta/Fort McCoy altimeter setting and increase all MDA 20 feet, increase LNAV Cat C visibility 1/8 mile. Helicopter visibility reduction below 1 SM NA. Procedure NA at night. **MISSED APPROACH:** Climb to 3000 direct GLAKE and hold.

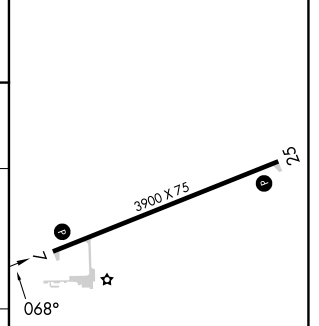
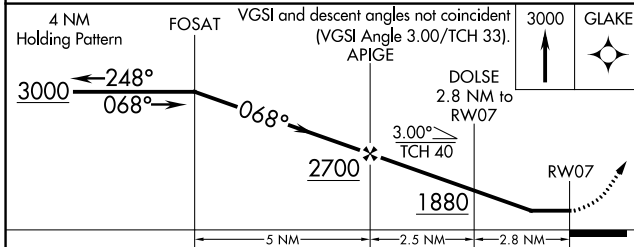
VOLK APP CON ★ <b>135.25 244.875</b>	VOLK CTAF <b>127.5</b>	CTAF <b>122.9</b>
---	---------------------------	----------------------



EC-3, 31 OCT 2024 to 28 NOV 2024

EC-3, 31 OCT 2024 to 28 NOV 2024

ELEV 966	TDZE 966
----------	----------



CATEGORY	A	B	C	D
LP MDA	1460-1	494 (500-1)	1460-1 3/8 494 (500-1 3/8)	NA
LNAV MDA	1500-1	534 (600-1)	1500-1 1/2 534 (600-1 1/2)	NA
<b>C</b> CIRCLING	1540-1 574 (600-1)	1560-1 594 (600-1)	1660-2 694 (700-2)	NA

MIRL Rwy 7-25  
REIL Rwy 7 and 25