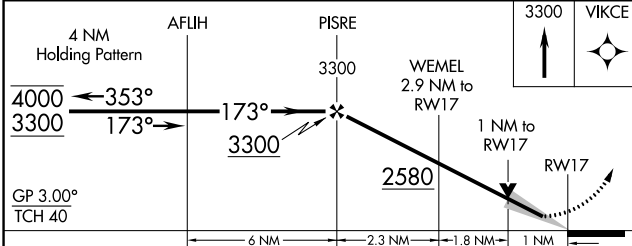
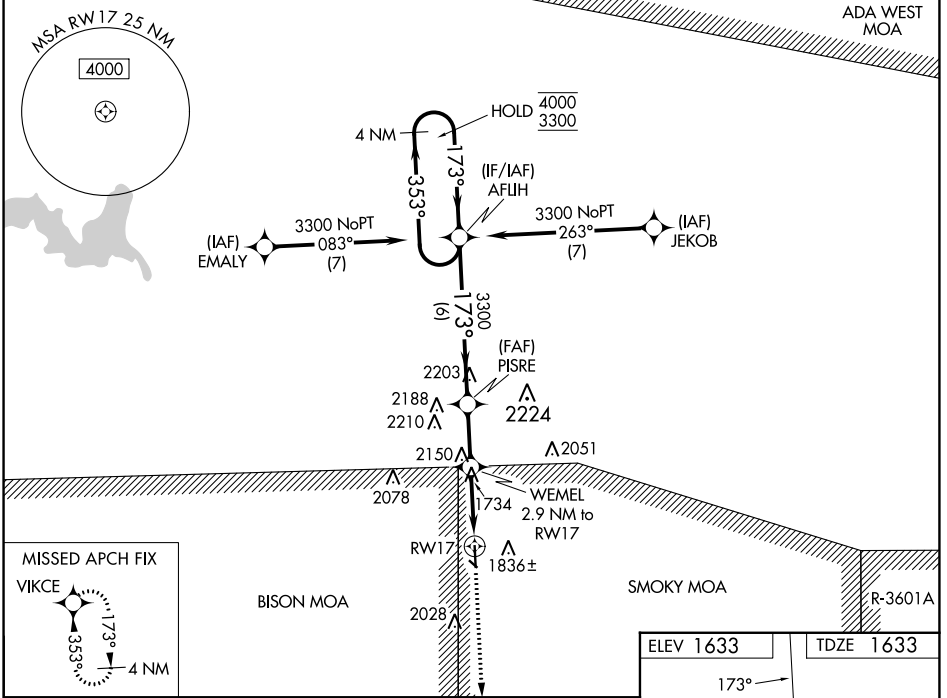


WAAS CH 69444 W17A	APP CRS 173°	Rwy Idg TDZE Apt Elev	4500 1633 1633
--	------------------------	-----------------------------	---

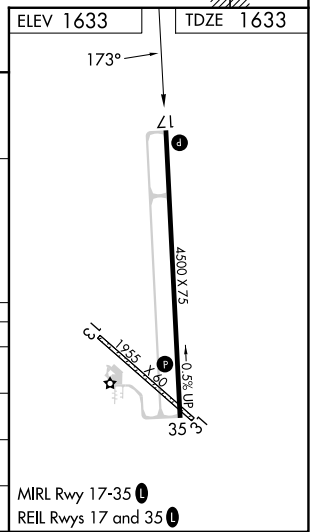
RNAV (GPS) RWY 17

ELLSWORTH MUNI (9K7)

RNP APCH - GPS.		MISSED APPROACH: Climb to 3300 direct VIKCE and hold.
<p>⚠ Circling NA to Rwys 13 and 31. For uncompensated Baro-VNAV systems, LNAV/VNAV NA below -18°C or above 54°C.</p>		
AWOS-3PT 119.675	KANSAS CITY CENTER 134.9 363.2	UNICOM 122.7 (CTAF) 0



CATEGORY	A	B	C	D
LPV DA	1833-1	200 (200-1)		NA
LNAV/VNAV DA	1883-1	250 (300-1)		NA
LNAV MDA	2000-1	367 (400-1)		NA
C CIRCLING	2200-1	567 (600-1)	2540-2 ³ / ₄ 907 (1000-2 ³ / ₄)	NA



NC-2, 31 OCT 2024 to 28 NOV 2024

NC-2, 31 OCT 2024 to 28 NOV 2024