

WAAS CH 93943 W22A	APP CRS 224°	Rwy Idg TDZE Apt Elev	4502 2339 2356
--	------------------------	-----------------------------	---

RNAV (GPS) RWY 22

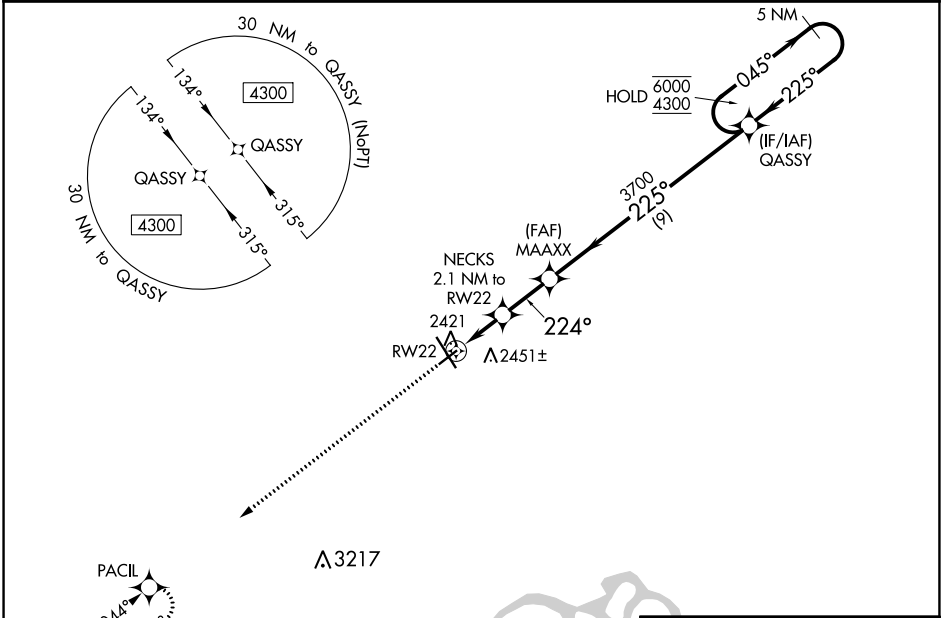
WILLISTON BASIN INTL (XWA)

RNP APCH-GPS.

⚠ For uncompensated Baro-VNAV systems, LNAV/VNAV NA below -19°C or above 54°C.

MISSED APPROACH: Climb to 4300 direct PACIL and hold.

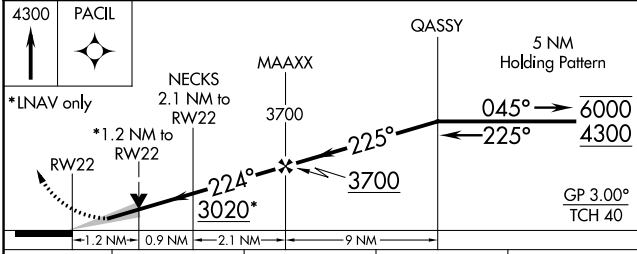
ASOS 125.925	SALT LAKE CITY CENTER 126.85 305.2	UNICOM 122.8 (CTAF)
------------------------	--	-------------------------------



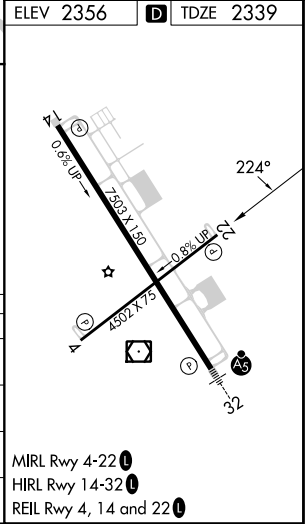
NC-1, 31 OCT 2024 to 28 NOV 2024

NC-1, 31 OCT 2024 to 28 NOV 2024

ELEV 2356	D TDZE 2339
-----------	--------------------



CATEGORY	A	B	C	D
LPV DA		2539-1	200 (200-1)	
LNAV/VNAV DA		2589-1	250 (300-1)	
LNAV MDA	2740-1	401 (400-1)	2740-1 $\frac{1}{8}$	401 (400-1 $\frac{1}{8}$)
C CIRCLING	2760-1 404 (500-1)	2820-1 464 (500-1)	2820-1 $\frac{1}{2}$ 464 (500-1 $\frac{1}{2}$)	2920-2 564 (600-2)



MIRL Rwy 4-22
HIRL Rwy 14-32
REIL Rwy 4, 14 and 22