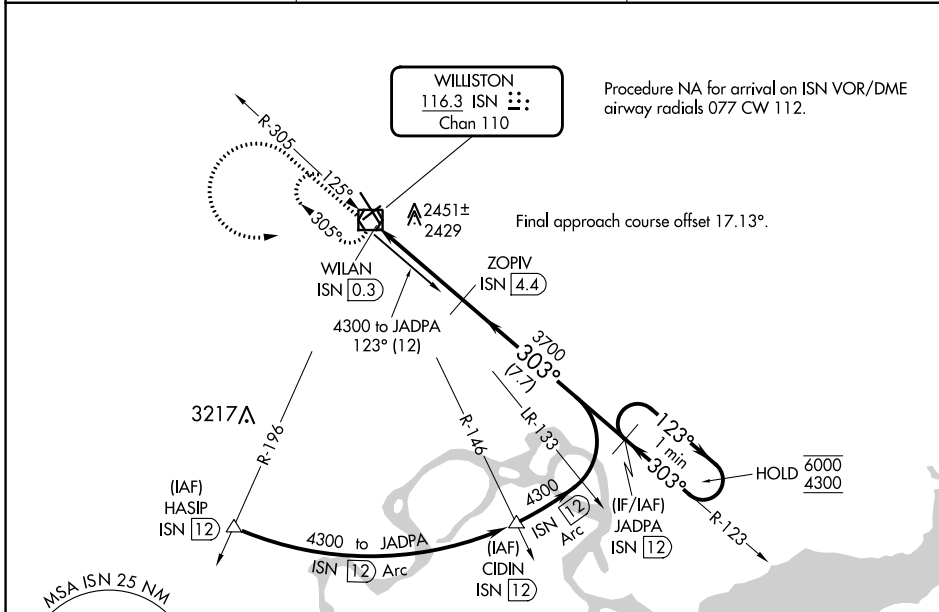


VOR/DME ISN <b>116.3</b> Chan <b>110</b>	APP CRS <b>303°</b>	Rwy Idg TDZE Apt Elev	<b>7503</b> <b>2350</b> <b>2353</b>
--	------------------------	-----------------------------	---

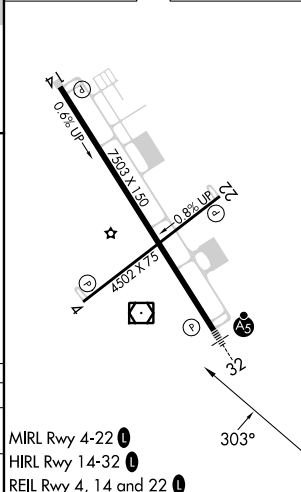
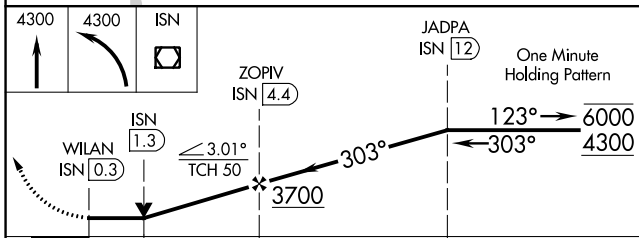
**VOR RWY 32**  
WILLISTON BASIN INTL (XWA)

DME required.	MALSR	MISSED APPROACH: Climb to 4300 then climbing left turn to 4300 direct ISN VOR/DME and hold
<p>For inop ALS, increase S-32 Cats C/D visibility to 1 1/8 SM.</p>		

ASOS <b>125.925</b>	SALT LAKE CITY CENTER <b>126.85 305.2</b>	UNICOM <b>122.8 (CTAF) 0</b>
------------------------	--	---------------------------------



ELEV 2353	<b>D</b> TDZE 2350
-----------	--------------------



CATEGORY	A	B	C	D
S-32	2740-1/2 390 (400-1/2)		2740-3/4 390 (400-3/4)	
<b>C</b> CIRCLING	2760-1 407 (500-1)	2820-1 467 (500-1)	2820-1 1/2 467 (500-1 1/2)	2920-2 567 (600-2)

MIRL Rwy 4-22 **0**

HIRL Rwy 14-32 **0**

REIL Rwy 4, 14 and 22 **0**

NC-1, 31 OCT 2024 to 28 NOV 2024

NC-1, 31 OCT 2024 to 28 NOV 2024