

APP CRS	Rwy Idg	3849
045°	TDZE	281
	Apt Elev	288

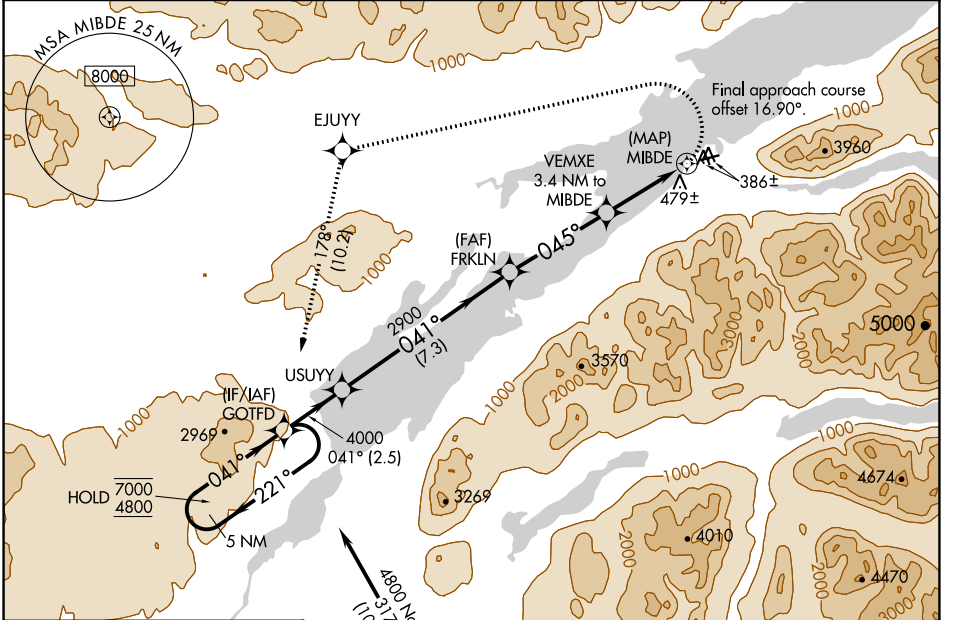
RNAV (GPS) RWY 6R

WILDER RUNWAY (Ø5K)(PAKX)

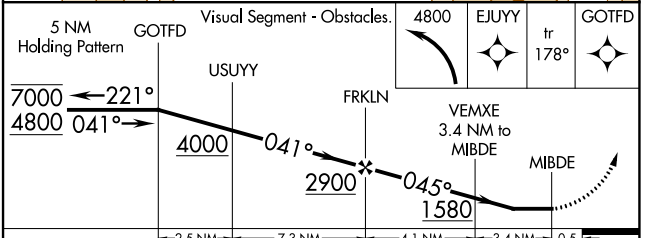
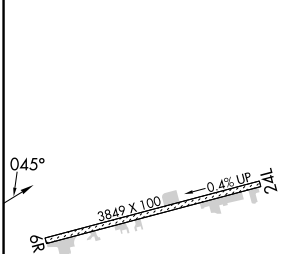
RNP APCH - GPS.
Procedure NA at night. Rwy 6R helicopter visibility reduction below 1 SM NA. Circling NA south of Rwy 6R-24L.
-18°C

MISSED APPROACH: Climbing left turn to 4800 direct EJUY and on track 178° to GOTFD and hold, continue climb-in-hold to 4800.

AWOS-3P 118.025	ANCHORAGE CENTER 118.8 351.8	CTAF 122.9
---------------------------	--	----------------------



ELEV 288	TDZE 281
----------	----------



CATEGORY	A	B	C	D
LNAV MDA	860-1	579 (600-1)	NA	
CIRCLING	1280-1¼ 992 (1000-1¼)	1980-1½ 1692 (1700-1½)	NA	

AK, 31 OCT 2024 to 26 DEC 2024

AK, 31 OCT 2024 to 26 DEC 2024