

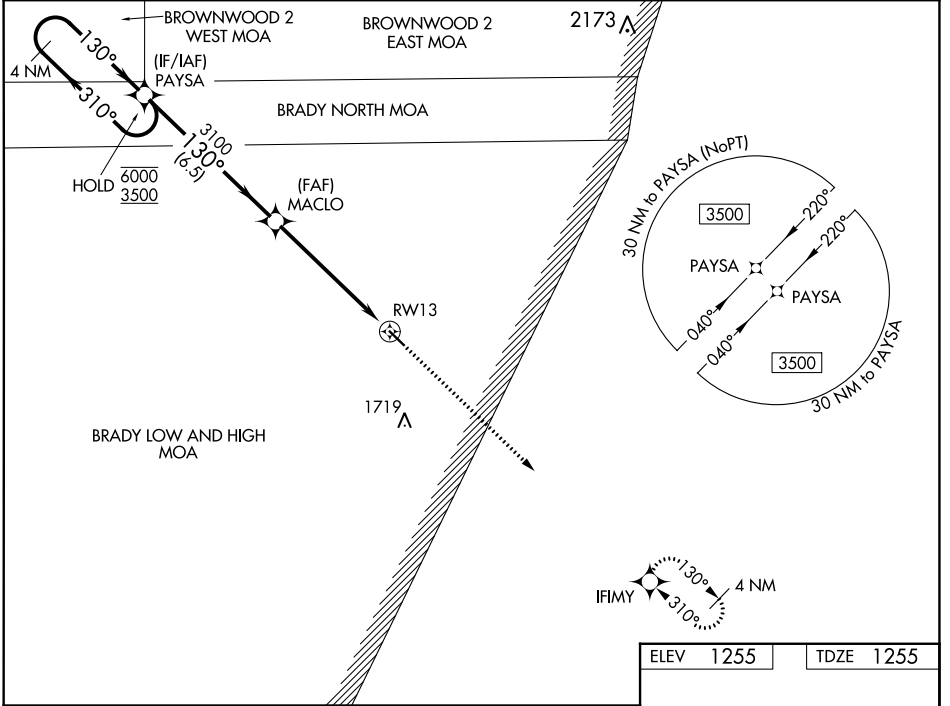
WAAS CH 87144 W13A	APP CRS 130°	Rwy Idg TDZE 1255 Apt Elev 1255	4206
--	------------------------	---	-------------

RNAV (GPS) RWY 13

SAN SABA COUNTY MUNI (81R)

RNP APCH - GPS.	MISSED APPROACH: Climb to 3500 direct IFIMY and hold.
<p>▼ Rwy 13 helicopter visibility reduction below 3/4 SM NA. For uncompensated Baro-VNAV systems, LNAV/VNAV NA below -17°C or above 54°C.</p>	

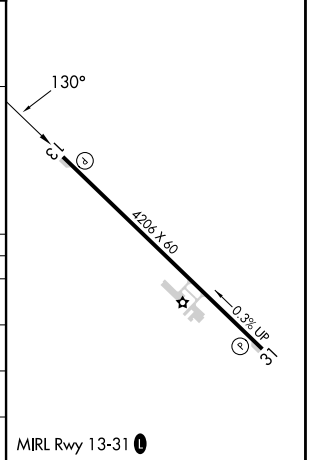
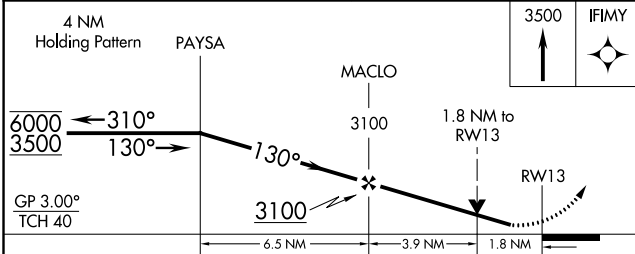
AWOS-3P 120.525	HOUSTON CENTER 132.35 317.5	UNICOM 122.8 (CTAF) 0
---------------------------	---------------------------------------	---------------------------------



SC-3, 31 OCT 2024 to 28 NOV 2024

SC-3, 31 OCT 2024 to 28 NOV 2024

ELEV	1255	TDZE	1255
------	------	------	------



CATEGORY	A	B	C	D
LPV DA	1505-1	250 (300-1)		NA
LNAV/VNAV DA	1505-1	250 (300-1)		NA
LNAV MDA	1860-1	605 (700-1)		NA
CIRCLING	1860-1	605 (700-1)		NA

MIRL Rwy 13-31 0