

# SOUTH KAUAI-SIX DEPARTURE (OBSTACLE) (SOK6.SOK)

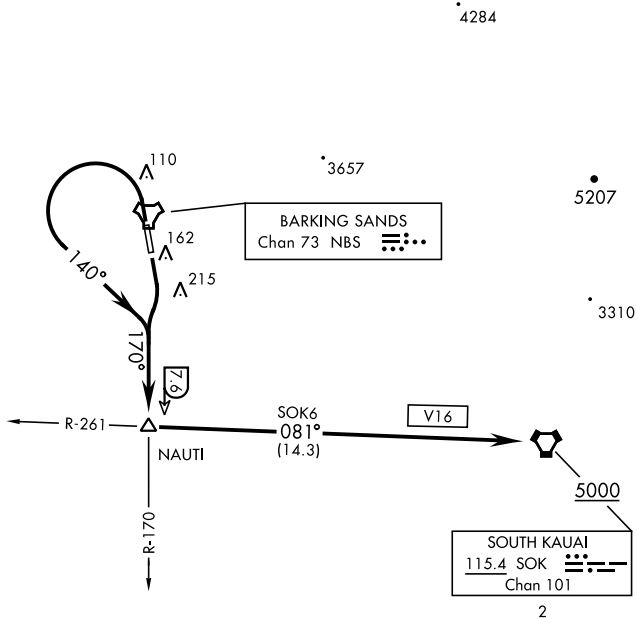
KEKAHA, KAUAI I, HAWAII

BARKING SANDS TOWER ★  
126.2 360.2  
HCF APP  
126.5 269.4

AL-767 [USN]

Rwy	Knots	60	120	180	240	300	360
16	V/V(fpm)	300	600	900	1200	1500	1800
34	V/V(fpm)	260	520	780	1040	1300	1560

ATC Climb Rate to 5000



PAC, 31 OCT 2024 to 26 DEC 2024

PAC, 31 OCT 2024 to 26 DEC 2024

## DEPARTURE ROUTE DESCRIPTION

TAKEOFF RWY 16: Climbing right turn to intercept NBS TACAN R-170 to NAUTI, thence...

TAKEOFF RWY 34: Climbing left turn heading 140° to intercept NBS TACAN R-170 to NAUTI, thence...

...turn left to intercept SOK VORTAC R-261(V16) direct SOK. Cross SOK at or above 5000.

# SOUTH KAUAI-SIX DEPARTURE (OBSTACLE) (SOK6.SOK)

KEKAHA, KAUAI I, HAWAII