

LOC/DME I-EMB 109.75 Chan 34 (Y)	APP CRS 175°	Rwy Idg 7202 TDZE 1771 Apt Elev 1791
--	------------------------	---

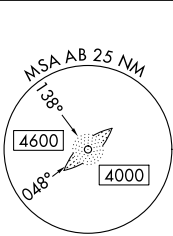
LOC RWY 17R

ABILENE RGNL (ABI)

ADF required for missed approach.

MISSED APPROACH: Climb to 2800 then climbing left turn to 4000 direct TOMHI LOM and hold.

ATIS 118.25	ABILENE APP CON 125.0 338.3 (EAST) 127.2 282.3 (WEST)	ABILENE TOWER 120.1 257.8	GND CON 121.7 348.6
-----------------------	---	-------------------------------------	-------------------------------



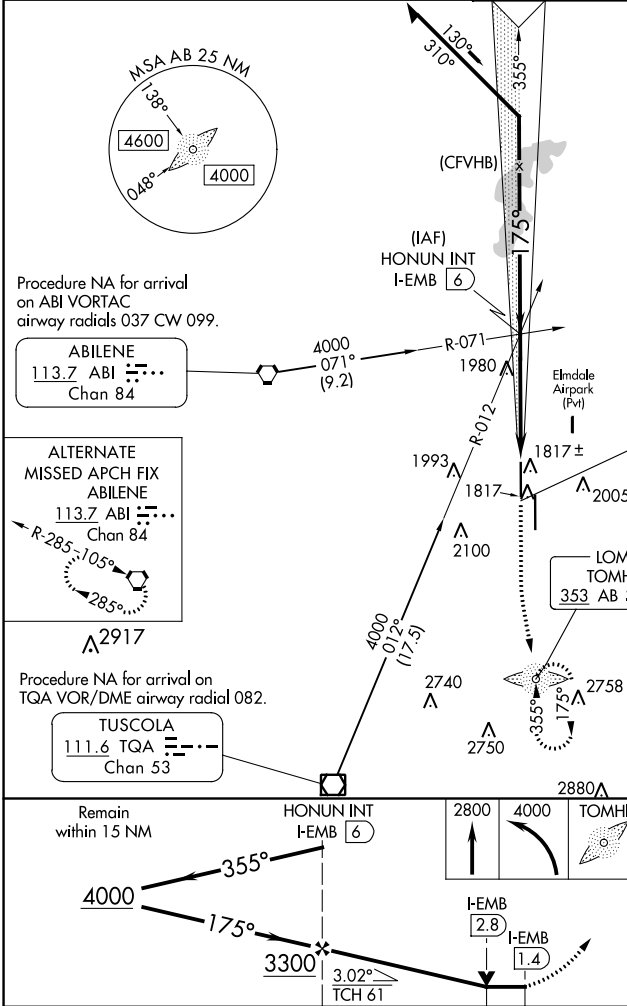
Procedure NA for arrival on ABI VORTAC airway radials 037 CW 099.

ABILENE
113.7 ABI
Chan 84

ALTERNATE MISSED APCH FIX ABILENE
113.7 ABI
Chan 84

Procedure NA for arrival on TQA VOR/DME airway radial 082.

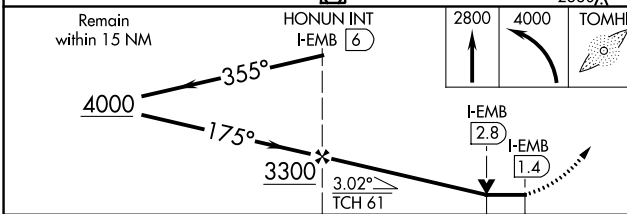
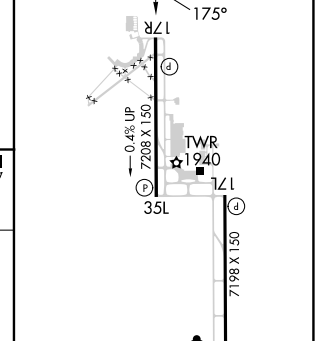
TUSCOLA
111.6 TQA
Chan 53



LOCALIZER 109.75
I-EMB
Chan 34(Y)

LOM TOMHI
353 AB

ELEV 1791	TDZE 1771
-----------	-----------



CATEGORY	A	B	C	D	E
S-LOC 17R	2280-1	509 (500-1)	2280-1 ³ / ₈	509 (500-1 ³ / ₈)	
CIRCLING	2300-1 509 (600-1)	2320-1 529 (600-1)	2420-1 ³ / ₄ 629 (700-1 ³ / ₄)	2460-2 669 (700-2)	2620-3 829 (900-3)
FAF to MAP 4.6 NM					
Knots	60	90	120	150	180
Min:Sec	4:36	3:04	2:18	1:50	1:32

SC-2, 28 NOV 2024 to 26 DEC 2024

SC-2, 28 NOV 2024 to 26 DEC 2024