

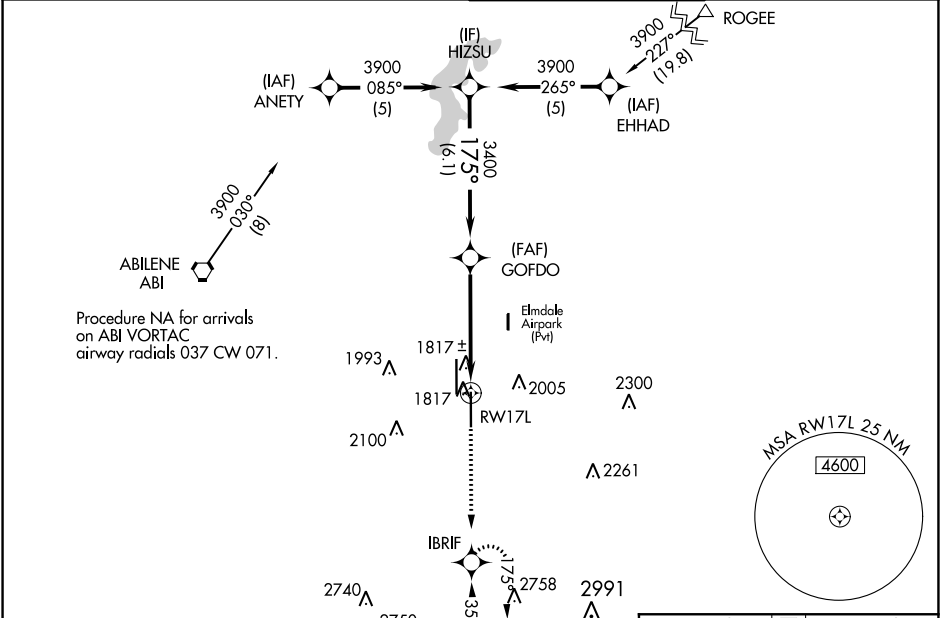
WAAS CH <b>50317</b> <b>W17A</b>	APP CRS <b>175°</b>	Rwy Idg TDZE Apt Elev	<b>7198</b> <b>1791</b> <b>1791</b>
--	------------------------	-----------------------------	---

# RNAV (GPS) RWY 17L

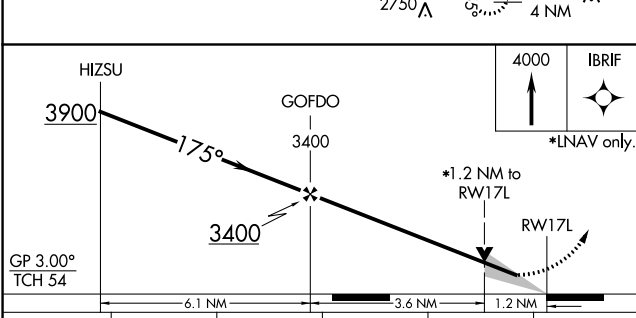
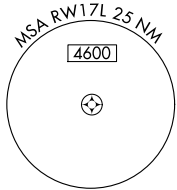
ABILENE RGNL (ABI)

RNP APCH.	MISSED APPROACH: Climb to 4000 direct IBRIF and hold, continue climb-in-hold to 4000.
<p>For uncompensated Baro-VNAV systems, LNAV/VNAV NA below -18°C or above 45°C.</p>	

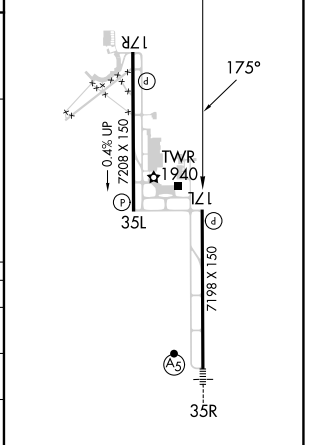
ATIS <b>118.25</b>	ABILENE APP CON <b>125.0 338.3 (EAST)</b> <b>127.2 282.3 (WEST)</b>	ABILENE TOWER <b>120.1 257.8</b>	GND CON <b>121.7 348.6</b>
-----------------------	---	-------------------------------------	-------------------------------



Procedure NA for arrivals on ABI VORTAC airway radials 037 CW 071.



ELEV 1791	TDZE 1791
-----------	-----------



CATEGORY	A	B	C	D	E
LPV DA	2041-3/4		250 (300-3/4)		
LNAV/VNAV DA	2171-1 1/4		380 (400-1 1/4)		
LNAV MDA	2240-1 449 (500-1)		2240-1 3/8 449 (500-1 3/8)		
CIRCLING	2300-1 509 (600-1)	2320-1 529 (600-1)	2420-1 3/4 629 (700-1 3/4)	2460-2 669 (700-2)	2620-3 829 (900-3)

REIL Rwy 35L  
HIRL Rwy 17L-35R and 17R-35L

SC-2, 28 NOV 2024 to 26 DEC 2024

SC-2, 28 NOV 2024 to 26 DEC 2024