


HI-ILS or LOC X RWY 16

LOC I-TYY 109.9	APCH CRS 164°	Rwy Idg 13,500 TDZE 1790 Arprt Elev 1790	AL-2 [USAF]	DYESS AFB (KDYS)
---------------------------	-------------------------	---	-------------	------------------

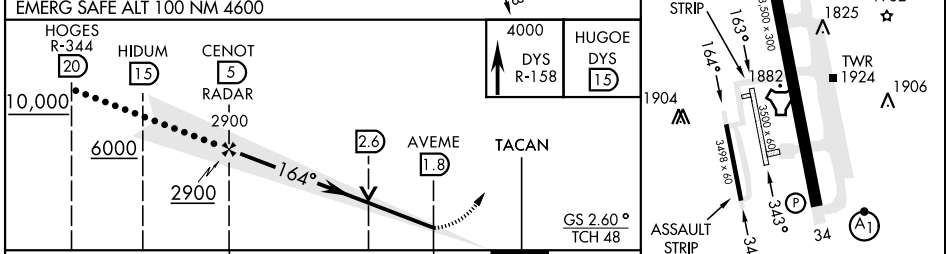
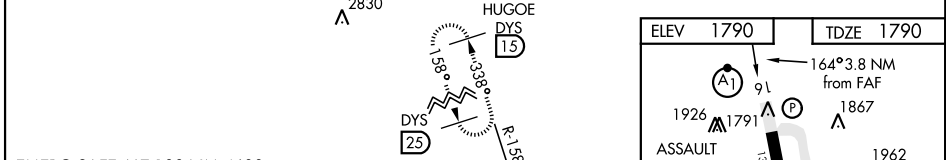
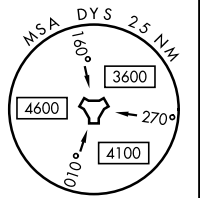
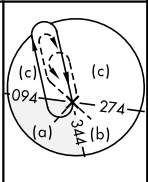
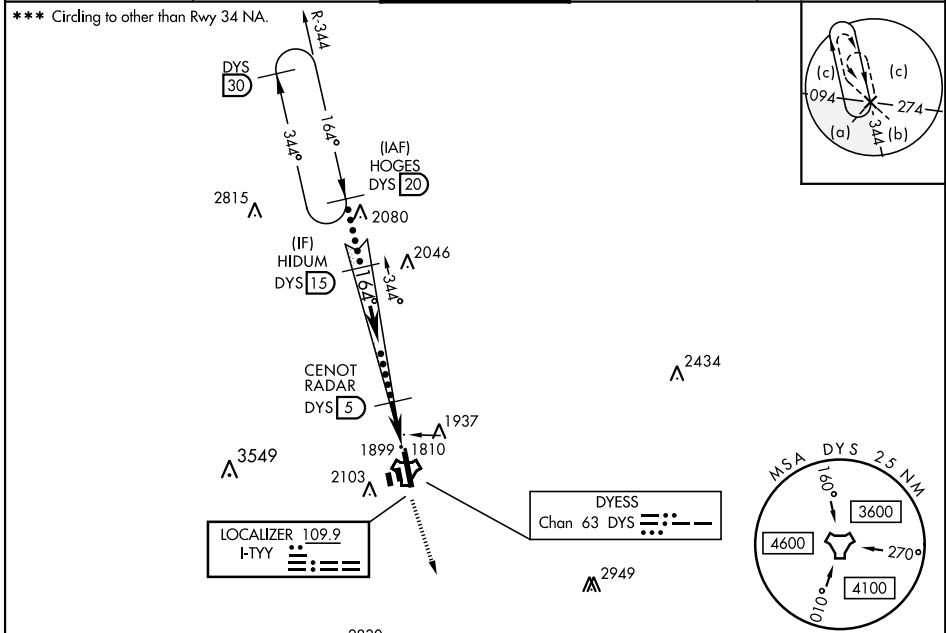
RADAR or DME required.

ALSF-1 

MISSED APPROACH: Climb to 4000 via DYS TACAN R-158 to HUGOE and hold.

* When ALS inop, increase CAT CDE RVR to 40 and vis to ¼ mile.
 ** When ALS inop, increase CAT CDE RVR vis to 1 ¼ miles.

ATIS ★ 269.175	ABILENE APP CON 125.0 338.3 EAST 127.2 282.3 WEST	TOWER 133.0 257.675	GND CON 118.35 275.8	ASR
--------------------------	---	-------------------------------	--------------------------------	-----



CATEGORY	C	D	E
S-ILS 16 *	1990/24	200	(200-½)
S-LOC 16 **	2220/40	430	(500-¾)
*** CIRCLING	2460-1¾ 670 (700-1¾)	2460-2 670 (700-2)	2460-2¼ 670 (700-2¼)

LIRL Rwy 164°-344°	HIRL Rwy 16-34	FAF to MAP 3.2 NM			
Knots	120	140	160	180	200
Min:Sec	1:36	1:22	1:12	1:04	0:58

ABILENE, TEXAS 32° 25' N-99° 51' W DYESS AFB (KDYS)

HI-ILS or LOC X RWY 16

SC-2, 28 NOV 2024 to 26 DEC 2024

SC-2, 28 NOV 2024 to 26 DEC 2024