

ABILENE, TEXAS

VOR/DME RWY 34

VOR/DME TQA 111.6 Chan 53	APCH CRS 340°	Rwy Ldg 13,500 TDZE 1788 Arprt Elev 1790
---	-------------------------	---

AL-2 [USAF]

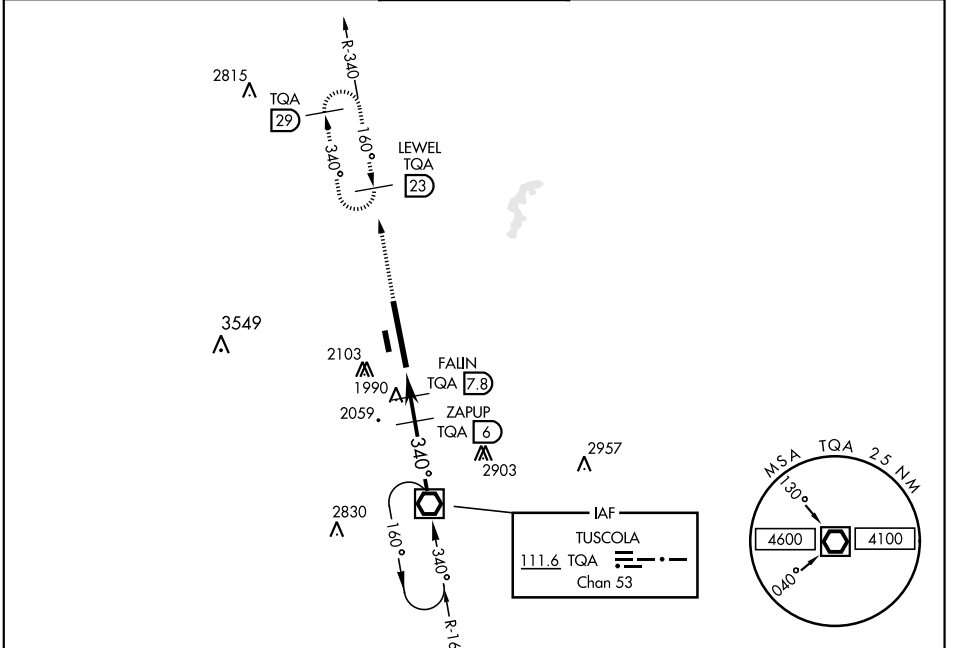
DYESS AFB (KDYS)

* When ALS inop, increase CAT AB RVR to 55 and vis to 1 mile, CAT CDE RVR vis to 1 3/8 miles.
 ** Circling to other than Rwy 16 NA

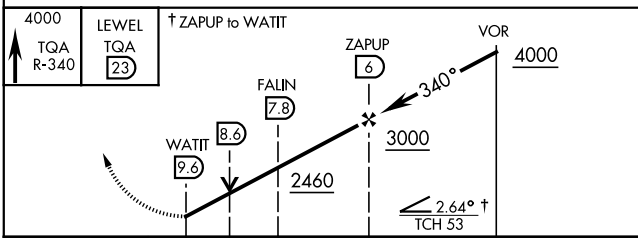


MISSED APPROACH: Climb to 4000 via TQA VOR/DME R-340 to LEWEL and hold.

ATIS ★ 269.175	ABILENE APP CON 125.0 338.3 EAST 127.2 282.3 WEST	DYESS TOWER 133.0 257.675	GND CON 118.35 275.8	ASR
--------------------------	---	-------------------------------------	--------------------------------	-----



EMERG SAFE ALT 100 NM 4600



ELEV 1790	TDZE 1788																								
LIRL Rwy 164°-344° HIRL Rwy 16-34																									
FAF to MAP 3.6 NM 340° 4.1 NM from FAF																									
CIRCLING **	<table border="1"> <tr> <th>Category</th> <th>A</th> <th>B</th> <th>C</th> <th>D</th> <th>E</th> </tr> <tr> <td>S-34 *</td> <td>2260/24</td> <td>472 (500-1/2)</td> <td>2260/50</td> <td>472 (500-1)</td> <td></td> </tr> <tr> <td>2300-1</td> <td>2320-1</td> <td>2460-1 3/4</td> <td>2460-2</td> <td>2460-2 1/4</td> <td></td> </tr> <tr> <td>510 (600-1)</td> <td>530 (600-1)</td> <td>670 (700-1 3/4)</td> <td>670 (700-2)</td> <td>670 (700-2 1/4)</td> <td></td> </tr> </table>	Category	A	B	C	D	E	S-34 *	2260/24	472 (500-1/2)	2260/50	472 (500-1)		2300-1	2320-1	2460-1 3/4	2460-2	2460-2 1/4		510 (600-1)	530 (600-1)	670 (700-1 3/4)	670 (700-2)	670 (700-2 1/4)	
Category	A	B	C	D	E																				
S-34 *	2260/24	472 (500-1/2)	2260/50	472 (500-1)																					
2300-1	2320-1	2460-1 3/4	2460-2	2460-2 1/4																					
510 (600-1)	530 (600-1)	670 (700-1 3/4)	670 (700-2)	670 (700-2 1/4)																					
Knots	60 90 120 150 180																								
Min:Sec	3:36 2:24 1:48 1:26 1:12																								

ABILENE, TEXAS

32°25' -99°51'W

DYESS AFB (KDYS)

Amdt 3 10NOV16

VOR/DME RWY 34

SC-2, 28 NOV 2024 to 26 DEC 2024

SC-2, 28 NOV 2024 to 26 DEC 2024