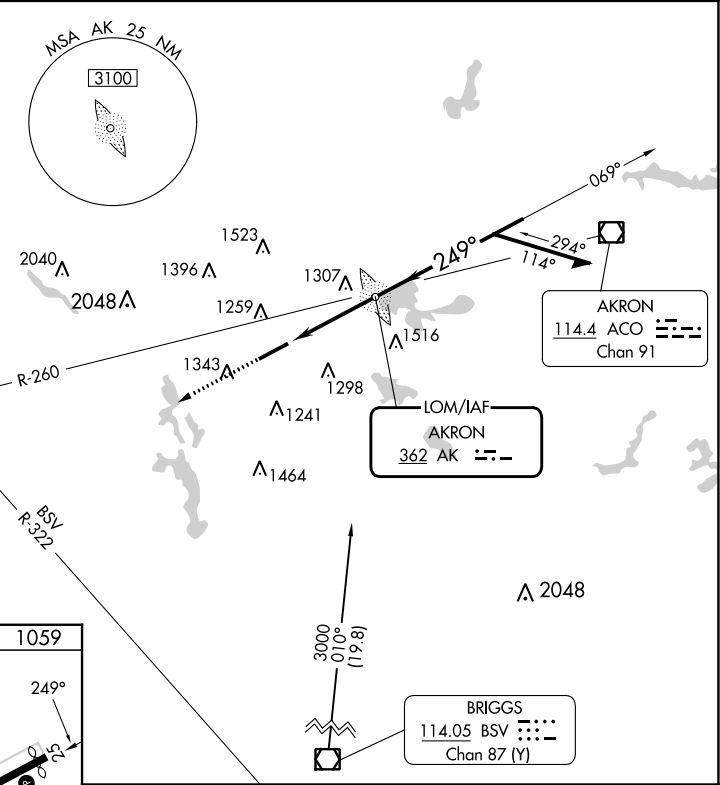
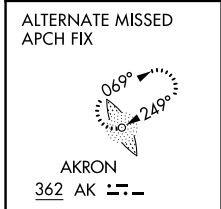


LOM AK <b>362</b>	APP CRS <b>249°</b>	Rwy Idg 6074
		TDZE <b>1059</b>
		Apt Elev <b>1068</b>

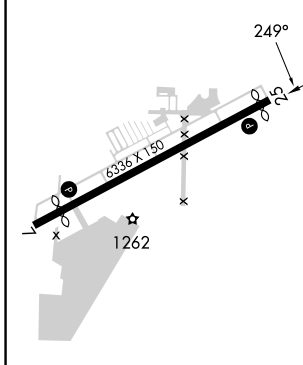
# NDB RWY 25

AKRON FULTON INTL (AKR)

<p><b>▼</b> Rwy 25 helicopter visibility reduction below 1 SM NA.  <b>▲</b> Circling Rwy 7 NA at night.</p>		<p>MISSED APPROACH: Climb to 3100 on heading 249° and          BSV VOR/DME R-322 to RITZS INT/BSV 21.2 DME and hold.</p>	
ASOS <b>126.825</b>	CLEVELAND APP CON * <b>125.5 371.875</b>	CLNC DEL <b>121.6</b>	UNICOM <b>123.075 (CTAF) 0</b>



ELEV 1068	TDZE 1059
-----------	-----------

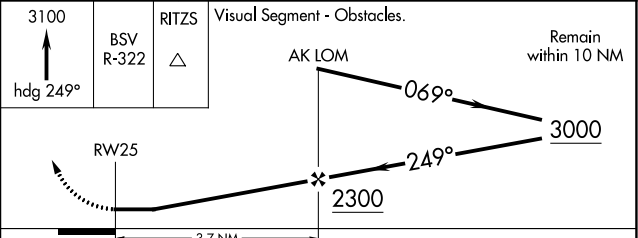


REIL Rws 7 and 25 0  
 MIRL Rwy 7-25 0

FAF to MAP 3.7 NM

Knots	60	90	120	150	180
Min:Sec	3:42	2:28	1:51	1:29	1:14

**☑** CIRCLING



CATEGORY	A	B	C	D
S-25	1620-1	561 (600-1)	1620-1½	561 (600-1½)
<b>☑</b> CIRCLING	1620-1 552 (600-1)	1680-1 612 (700-1)	1800-2 732 (800-2)	1840-2½ 772 (800-2½)

EC-2, 28 NOV 2024 to 26 DEC 2024

EC-2, 28 NOV 2024 to 26 DEC 2024